



STATIC SOLUTIONS WITH SAVINGS



P. 623-582-6700 F. 623-582-6776



GLOBAL SUPPLIER

BOTRON
ESD CATALOG
USA

STATIC SOLUTIONS WITH SAVINGS

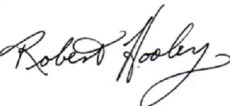
BOTRON CO. INC. ESD CATALOG

Botron Company Inc. is a manufacturer of ESD safe and static control products and equipment. We are pleased to have serviced the EOS/ESD Industry since the 80's. Founded by Robert C. Hooley, it has always been our goal here at Botron to consistently offer the highest quality products at the best value.

From our early days, Botron has been a company that has been approachable, a company with a philosophy of developing relationships with its customers. When you buy our Botron static control products, you are not just getting a piece of equipment packed up in a box, you are getting one-on-one support from the moment you first call. Our sales staff is customer driven, so every order is treated the same whether large or small.

Being a customer driven, family owned and operated business, we have brought our values as a family into our daily work. We believe in taking care of one another and going the extra mile. We have been told we are "the easy ESD manufacturer to work with". Botron Company Inc. hopes that you too will see this when working with us.

Sincerely,



Robert C. Hooley - President

Ordering Info & Locations

P: 623-582-6700
F: 623-582-6776
email: sales@botron.com

Botron Phoenix - Corporate
325 West Melinda Lane
Phoenix, AZ 85027
(623) 582-6700

Botron North East - Stocking Warehouse
10 Dunklee Road, Unit 24
Bow, NH 03304

Botron West - Engineering, Research and Development
268 North Lincoln Unit #3
Corona, CA 92882
(951) 479-1344



Personal Grounding	
Heel Grounders.	3-5
Coil Cords.	6
Wrist Straps.	7-8
ESD Matting	
Table Mats.	9-10
Floor Mats.	11-13
Field Service Kits.	14
Grounding & Hardware.	15-16
ESD Test Equipment	
Monitors.	17
Resistivity Testers.	18
ELITE Test System/Turnstile.	19-22
ESD Test Stations.	21
Resistance Testers.	22
Ionization	
Overhead.	23
Bench Top.	23
Compressed Air.	24
Ionization Audit Equipment.	25
Material Handling	
Bags & Sealers.	26-27
Labels & Signage.	28
Production Tools.	29
Board Handlers & Foam.	30
Floor Care & Cleaners	
Floor Finish.	31
Concrete Finish.	31
Mat Cleaner.	31
Cleanroom	
Tacky Mats.	32
Cleanroom Wear.	32
Garments	
Gloves.	33
Finger Cots.	33
Smocks.	34
Tapes	
Cellulose.	35
Hi-Temp.	35
Aisle Marking.	35
Tape Dispensers.	36
ESD Accessories	
Fume Extractors.	37
Rubber Bands.	37
Binders.	38
Sheet Protectors.	38
Chairs.	39
Index	
Index.	40

STATIC SOLUTIONS WITH SAVINGS

Data Acquisition Has Arrived!

- Failure Prevention
- VTR Technology
- Real Time Results
- Personalized Flexibility

See page 19

ELITE



1000'S OF PRODUCTS NEW INNOVATIONS



**PORTABLE AUDIT
IONIZATION
METER**

See page 25

**SOFT FOOT ANTI FATIGUE
FLOOR MAT & RUNNERS**



See page 11



**THE MOST ADVANCED
CONSTANT MONITOR SYSTEM**

ELITE

See page 17



TRY ME!

What's This?

"The Front Door"
QR Codes, more commonly known as 2D Barcodes, are a way for us to bring more information to your finger tips!

Simple.

Point and shoot your camera phone at a mobile code to connect directly to our website.

All you need is a code reader for your camera phone and you are in on the fun. Check whether your mobile phone already has a preinstalled code reader or find out how to get one.

QR Code ® is a registered trademark of DENSO WAVE INCORPORATED



HEEL GROUNDER ERGO-ONE



**AVAILABLE IN
THESE COLORS**

Blue Ergo-One Heel Grounders

B7500 Blue 1 MegOhm Resistor
B7501 Blue No Resistor
B7502 Blue 2 MegOhm Resistor

Black Ergo-One Heel Grounders

B7510 Black 1 MegOhm Resistor
B7511 Black No Resistor
B7512 Black 2 MegOhm Resistor

Cup Design: 1.5" x 7.5" Two Layer Rubber
Sole Interior: Non-Marking Rubber
Sole Exterior: Conductive Rubber 5x10³
Ribbon: 18" Conductive Nylon
Charge Decay: <0.01Sec
Thickness: 0.080
Resistor: 1 MegOhm, 2 MegOhm, & No-Resistor models
RTG (w/ 1Meg): 1.1x10⁶ (min. rating)
RTG (w/ 2Meg): 2.2x10⁶ (min. rating)
Standards: ANSI/ESD S.20.20 & Mil-263A
Fastening system: ¾" x 7" Stretch Hook & Loop

Cup design:

The cup of all Botron Heel Grounders (w/exception to the hi-visibility models) are a symmetrical design that can be reversed when put on. It also features a dual layer rubber with a non-marking inside and a conductive rubber outside. As with all of our static control heel grounders, the Ergo One Series has a 1.5" wide rubber cup, securing both at the back and underneath the heel. It's 7.5" length rubber provides enough cup volume to fit comfortably on those with larger shoe sizes.

Grounding:

Our ESD heel grounders come standard with a conductive 18" ribbon. All resistors are built in and are available in 1meg or 2meg applications, also available in no resistor.

HEEL GROUNDER DAY-GLOW



Features: The Day-Glow features a hi-visibility yellow stretch hook and loop fastening system for easy identification in the work area.

Resistor: 1 MegOhm, 2 MegOhm, and No-Resistor models
RTG (w/ 1Meg): 1.1x10⁶ (min. rating)
RTG (w/ 2Meg): 2.2x10⁶ (min. rating)
Standards: ANSI/ESD S.20.20 & Mil-263A
Fastening system: ¾" x 7" Stretch Hook & Loop

Yellow Day-Glow Heel Grounders

B7530 Yellow 1 MegOhm Resistor
B7531 Yellow No Resistor
B7532 Yellow 2 MegOhm Resistor

HEEL GROUNDER STANDARD



Features: Botron's Standard Heel Grounder features a non-stretch hook and loop fastening system and meets DOD 263A standards.

Resistor: 1 MegOhm, 2 MegOhm, and No-Resistor models
RTG (w/ 1Meg): 1.1x10⁶ (min. rating)
RTG (w/ 2Meg): 2.2x10⁶ (min. rating)
Standards: ANSI/ESD S.20.20 & Mil-263A
Fastening system: ¾" x 7" Hook & Loop

Black Standard Heel Grounders

B7503 Black 1 MegOhm Resistor
B7504 Black No Resistor
B7508 Black 2 MegOhm Resistor



STATIC SOLUTIONS WITH SAVINGS

Blue Non-Marking Heel Grounders

B7571 Blue No Resistor
B7573 Blue 1 MegOhm Resistor
B7574 Blue 2 MegOhm Resistor

Features: Non-Marking Heel Grounders will not leave scuff marks and blemishes on your floor. It features a durable three layer rubber.

Cup Design:	1.5" x 7.5" Three Layer Rubber
Sole Interior:	Non-Marking Rubber
Sole Inside:	Conductive Rubber
Sole Exterior:	Non-Marking Rubber
Thickness:	0.130
Resistor:	1 MegOhm, 2 MegOhm, and No-Resistor models
RTG (w/ 1Meg):	<10 ⁸ (min. rating)
RTG (w/ 2Meg):	<10 ⁸ (min. rating)
Standards:	ANSI/ESD S.20.20 & Mil 263
Fastening system:	¾" x 7" Stretch Hook & Loop

HEEL GRINDER

NON-MARKING**D-Ring Heel Grounders**

B7528 Royal Blue 1 MegOhm Resistor
B7529 Bright Red 1 MegOhm Resistor

Features: D-Ring Heel Grounders feature a single hook and loop strap that make for easy fastening.

Resistor:	1 MegOhm, 2 MegOhm, and No-Resistor models
RTG (w/ 1Meg):	1.1x10 ⁶ (min. rating)
RTG (w/ 2Meg):	2.2x10 ⁶ (min. rating)
Standards:	ANSI/ESD S.20.20 & Mil 263
Fastening system:	¾" x 14" Hook & Loop w/ plastic D-Ring

HEEL GRINDER

D-RING**Hi-Visibility Heel Grounders**

B7595 Yellow 1 MegOhm Resistor

Features: Botron's all new Hi-Visibility Heel Grounder is designed with a Day-Glow hook and loop fastening system as well as the heel strap for greater visibility on the work floor.

Cup Design:	1.5" x 7.5" Two Layer Rubber w/ day glow elastic heel strap
Resistor:	1 MegOhm
RTG (w/ 1Meg):	1.1x10 ⁶ (min. rating)
RTG (w/ 2Meg):	2.2x10 ⁶ (min. rating)
Standards:	ANSI/ESD S.20.20 & Mil 263
Fastening system:	¾" x 7" Stretch Hook & Loop

HEEL GRINDER

HI-VISIBILITY**NEW HI-VISIBILITY CUP DESIGN****Black Snap-Loc Heel Grounders**

B7525 Black Elastic 1 MegOhm Resistor
B7526 Black Elastic No Resistor
B7527 Black Elastic 2 MegOhm Resistor

Features: Snap-Loc Heel Grounders utilize a snap-loc buckle for quick fastening as well as an elastic strap for a snug fit.

Resistor:	1 MegOhm, 2 MegOhm, and No-Resistor models
RTG (w/ 1Meg):	1.1x10 ⁶ (min. rating)
RTG (w/ 2Meg):	2.2x10 ⁶ (min. rating)
Standards:	ANSI/ESD S.20.20 & Mil 263
Fastening system:	Plastic Locking Snap Mechanism

HEEL GRINDER

SNAP-LOC

STATIC SOLUTIONS WITH SAVINGS

TOE GROUNDER
ERGO-ONE

Cup Design: 1.5" x 7.5" Two Layer Rubber
 Sole Interior: Non-Marking Rubber
 Sole Exterior: Conductive Rubber 5 x 10³
 Ribbon: 10" Conductive Nylon
 Charge Decay: <0.01Sec
 Thickness: 0.080
 Resistor: 1 MegOhm, 2 MegOhm, and No-Resistor models
 RTG (w/ 1Meg): 1.1x10⁶ (min. rating)
 RTG (w/ 2Meg): 2.2x10⁶ (min. rating)
 Standards: ANSI/ESD S.20.20 & Mil 263
 Fastening system: Plastic Locking Snap
 Packing: 1 per bag / bags of 25

Black Ergo-One Toe Grounders

B7522 Black 1 MegOhm Resistor
B7523 Black No Resistor
B7524 Black 2 MegOhm Resistor
B7520 Day Glow 1 MegOhm Resistor

Features: The cup of the Ergo One toe grounder is constructed of a 5" long piece of dual layer rubber, with a non-marking interior and a conductive rubber outer layer. All of our Toe Grounders utilize our elastic stretch strap and snap-loc design.

SOLE GROUNDER
FULL COVERAGE

Cup Design: Sm. - 7" / Med. - 7.5" / Lg. - 9"
 Sole Interior: Non-Marking Rubber
 Sole Exterior: Conductive Rubber 5 x 10³
 Ribbon: 18" Conductive Nylon
 Charge Decay: <0.01Sec
 Thickness: 0.080
 Resistor: 1 MegOhm and 2 MegOhm
 RTG (w/ 1Meg): 1.1x10⁶ (min. rating)
 Standards: ANSI/ESD S.20.20 & Mil 263
 Fastening system: ¾" x 8" Stretch Hook & Loop w/ plastic D-Ring
 Packing: 1 per bag / bags of 10

Black Full Coverage Sole & Heel Grounders

B7505 Small Black 1 MegOhm Resistor
B7505R Small Red 1 MegOhm Resistor
B7506 Medium Black 1 MegOhm Resistor
B7506B Medium Blue 1 MegOhm Resistor
B7507 Large Black 1 MegOhm Resistor
B7507-XL XL Black 1 MegOhm Resistor

Features: The Full Coverage Sole Grounder is designed to provide maximum surface coverage. The benefit of wearing a sole grounder is always maintaining contact with the floor surface whether on heel or toe.

HEEL GROUNDER
DISPOSABLE

Fabric: Non-woven polyester
 RTG: <3.5 x 10⁷
 Color: Hi Visibility Yellow
 Size: 11 3/4 x 1/2
 Packing: 100 per pack

Disposable Heel Grounders

B750368 Disposable High Visibility Yellow

Features: Botron's disposable heel ground is the ideal solution for visitors and temporary personal on the work floor of static controlled environments. It is a non-woven polyester with a wide conductive fiber strip. It easily adheres to the sole of the shoe and tucks conveniently into footwear.

**GREAT VALUE FOR
ONE TIME USE**

SHOE COVERS
DISPOSABLE

B20020
 Material: 100% Polypropylene
 Sizes: Lg. - 16.5" x 7.5"
 XL. - 17.5" x 7.5"
 Surface Resistance: <10⁶
 Ribbon: 12"
 Tension Strength: 15Mpa

B20023
 Material: 100% Polypropylene
 Sizes: Lg. - 16" x 6"
 XL. - 18" x 6"
 Particles: 199 average

Disposable Shoe Covers

B20020 Conductive Shoe Covers (300/pk)
B20023 Polypropylene Shoe Covers (300/pk)

Features: Botron's shoe covers are constructed from a medium weight spun polypropylene fabric. Our conductive shoe covers feature a sewn-in conductive ribbon with a surface resistance of 10⁶. Both the B20020 and B20023 come in two sizes.



STATIC SOLUTIONS WITH SAVINGS

G.E.M. ESD Coil Cords

B2308 Ruby G.E.M. Line 6' coil cord 1/8" snap

B2328 Ruby G.E.M. Line 12' coil cord 1/8" snap

B2448 Emerald G.E.M. Line 6' coil cord 1/8" snap

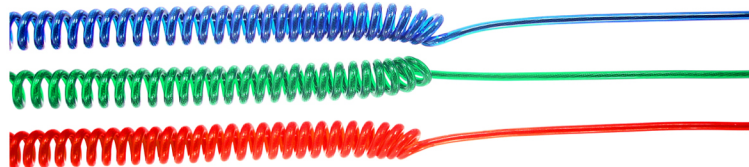
B2428 Emerald G.E.M. Line 12' coil cord 1/8" snap

B2508 Sapphire G.E.M. Line 6' coil cord 1/8" snap

B2528 Sapphire G.E.M. Line 12' coil cord 1/8" snap

**SEE PAGE 7 FOR
WRIST STRAP SETS**

COIL CORDS G.E.M.



"G.E.M." coil cords come in 6' or 12' lengths. They are available with a spring loaded 1/8" (4mm) connector to standard banana jack to ensure a reliable path to ground. Each cord comes with a slip on alligator clip that attaches to the banana jack for greater expansion of use. G.E.M. coil cords allow work room supervisors to easily detect when workers are properly grounded. Available in 3 vivid colors.

COIL CORDS LONG LIFE



Standard Coil Cords

B2004 Standard Coil Cord 6' 1/4" snap

B2008 Standard Coil Cord 6' 1/8" snap

B2024 Standard Coil Cord 12' 1/4" snap

B2028 Standard Coil Cord 12' 1/8" snap



Gray Coil Cords

B2208 Gray Coil Cord 6' 1/8" snap

B2228 Gray Coil Cord 12' 1/8" snap



Dual Coil Cords

B2184 Dual Standard Coil 2- 6' 1/8" snap

B2188 Dual Standard Coil 2- 12' 1/8" snap



Light Weight Coil Cords

B2108 Light Weight Coil Cord 6' 1/8" snap

B2110 Light Weight Coil Cord 12' 1/8" snap



Green Lead Free Coil Cords

B2008G Green Coil Cord 6' 1/8" snap

B2028G Green Coil Cord 12' 1/8" snap



90° Coil Cords

B2118 90° Angle Coil Cord 6' 1/8" snap

B2128 90° Angle Coil Cord 12' 1/8" snap



Field Service Coil Cords

B2185 Field Service Coil Cord 8' 1/4" snap & 10' 1/4" snap

Design:

Botron Long Life coil cords are made of black PVC insulation and 7 strand tinsel wire that provides superior strain reliefs at both ends. All Long Life coil cords come with a built in 1meg Ohm 1/4 watt resistor at snap end. Most models available in lengths of 6' and 12' long.

Mounting System:

Available in either a spring loaded 1/8" (4mm) or 1/4" (7mm) socket connector to standard banana jack applications. Each cord comes with a slip on alligator clip that attaches to the banana jack for greater expansion of use.

Standards:

Meets S1.1 of one to five pounds breakaway force



WRIST STRAPS G.E.M.



"G.E.M." coil cords are built on the same high quality platform as the "Long Life" wrist strap sets and offer the same durability and superior life. The G.E.M. line is unique in that its high visibility makes them easy to identify in the work environment.

Notes:

- Lead-free RoHS compliant
- High visibility
- Available in Ruby Red, Emerald Green and Sapphire Blue
- One size fits all
- Translucent coil cords
- Barrel type banana jack
- 1/8" (4mm) stud
- Coil has built in One MegOhm resistor
- Superior Strain relief
- Removable alligator clip with set

G.E.M. Wrist Straps

B9908 Ruby adjustable set w/6' coil 1/8" snap
B9928 Ruby adjustable set w/12' coil 1/8" snap
B9938 Ruby band only w/1/8" snap

B9948 Emerald adjustable set w/6' coil 1/8" snap
B9958 Emerald adjustable set w/12' coil 1/8" snap
B9968 Emerald band only w/1/8" snap

B9978 Sapphire adjustable set w/6' coil 1/8" snap
B9988 Sapphire adjustable set w/12' coil 1/8" snap
B9998 Sapphire band only w/1/8" snap

**SEE PAGE 17 FOR
MONITORING**

WRIST STRAPS LONG LIFE



Standard Adjustable Wrist Straps

B9008 Standard Adjustable set w/6' coil 1/8" snap
B9004 Standard Adjustable set w/6' coil 1/4" snap
B9028 Standard Adjustable set w/12' coil 1/8" snap
B9024 Standard Adjustable set w/12' coil 1/4" snap

B9018 Light Weight Adjustable set w/6' coil 1/8" snap
B9010 Light Weight Adjustable set w/12' coil 1/8" snap

B9038 Standard band only w/1/8" snap
B9034 Standard band only w/1/4" snap



Green Lead Free Wrist Straps

B9008G Green "Lead Free" Adjustable set with 6' coil 1/8"
B9028G Green "Lead Free" Adjustable set with 12' coil 1/8"
B9038G Green "Lead Free" band only with 1/8" snap



Blue Comfort Band Wrist Straps

B9104 Blue comfort band set w/6' coil 1/4" snap
B9134 Blue comfort band set w/12' coil 1/4" snap
B9144 Blue comfort band only w/1/4" snap

High quality Long Life adjustable anti static wrist strap sets are available in a 6' or 12' standard coil cord design. They provide the performance and reliability of a metal band with the comfort of cloth. The blue knitted material has a soft outer area and a 5/8" conductive area on the inside. Unlike many others which have 3-5 rows of conductive thread, these have a 5/8" area of solid conductive material, the largest conductive area on the market.

Material:

- Knitted 3/4" wide stretch elastic and cotton band
- 5/8" wide conductive woven thread
- Stainless steel back plate
- Composite face with metal snap
- PVC cord and 7 strand tinsel wire

Meets Standards:

ANSI EOS/ESD S4.1 RTG



Blue Constant Contact Hinge Wrist Straps

B9608 Blue adjustable set w/6' coil 1/8" snap
B9628 Blue adjustable set w/12' coil 1/8" snap
B9638 Blue band only w/1/8" snap



Burgundy Constant Contact Hinge Wrist Straps

B96108 Burgundy adjustable set w/6' coil 1/8" snap
B96128 Burgundy adjustable set w/12' coil 1/8" snap
B96138 Burgundy band only w/1/8" snap



STATIC SOLUTIONS WITH SAVINGS



Back Plate: Stainless Steel
Snap: 2 - 1/8"
Coil: 6' & 12' Mono Jack

Dual Wire Wrist Straps

B9358 Dual wrist strap w/6' coil & dual 1/8" snap
B9359 Dual wrist strap w/12' coil & dual 1/8" snap
B9357 Dual wrist strap only 1/8" stud



Dual Mono Jack wrist straps sold in both metal and fabric, features a single mono jack fastener, capable of reading both sides of the wrist strap. For use with continuous monitors.

Dual Mono Jack Wrist Straps

B95705 Dual Metal Set w/5' coil cord mono jack
B95710 Dual Metal Set w/10' coil cord mono jack
B95720 Dual Metal Set w/20' coil cord mono jack
B9577 Dual Metal band only w/mono jack

B9505 Dual Fabric Set w/5' coil cord mono jack
B9510 Dual Fabric Set w/10' coil cord mono jack
B9520 Dual Fabric Set w/20' coil cord mono jack
B9587 Dual Fabric band only w/mono jack



Band: 10.5" Hook and Loop Strap
Conductive area: 3/4" wide
Fastening System: Plastic D-Ring
Snap: 1/8" and 1/4" Snap
Coil: 6' & 12' Barrel Type

Hook & Loop Wrist Straps

B9268 Blue hook and loop set w/6' coil 1/8" snap
B9264 Blue hook and loop set w/6' coil 1/4" snap
B9248 Blue hook and loop set w/12' coil 1/8" snap
B9244 Blue hook and loop set w/12' coil 1/4" snap
B9258 Blue hook and loop band only w/1/8" stud
B9254 Blue hook and loop band only w/1/4" stud

B9208 Black hook and loop set w/6' coil 1/8" snap
B9204 Black hook and loop set w/6' coil 1/4" snap
B9228 Black hook and loop set w/12' coil 1/8" snap
B9224 Black hook and loop set w/12' coil 1/4" snap
B9238 Black hook and loop band only w/1/8" stud
B9234 Black hook and loop band only w/1/4" stud

WRIST STRAPS ADJUSTABLE



Inner Band: Stainless Steel
Snap: 2 - 1/8"
Coil: 6' & 12' Mono Jack

Dual Black Metal Wrist Straps

B9488 Dual Black wrist strap w/ 6' coil & dual 1/8" snap
B9489 Dual Black wrist strap w/12' coil & dual 1/8" snap
B9487 Dual Black wrist strap only 1/8" stud



Fully adjustable metal wrist strap sets are made of a stainless steel carbon free design that makes it an ideal solution for cleanroom environments.

Black Metal Adjustable Wrist Straps

B9478 Black Metal set w/6' coil 1/8" snap
B9479 Black Metal set w/12' coil 1/8" snap
B9477 Black Metal band only w/1/8" stud



Lightweight thermoplastic wrist straps are designed for comfort and portability. The zipper style latching system adjusts to fit any size.

Blue Lightweight Wrist Straps

B9606 Blue Thermoplastic set w/6' coil 1/8" snap
B9607 Blue Thermoplastic band only w/1/8" stud



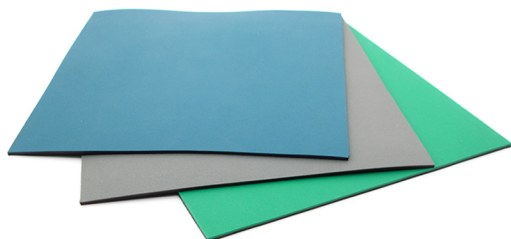
Disposable fabric wrist straps are 54" in length and have a 1 Meg Ohm resistor built into the fabric.

Disposable Wrist Straps

B9601-5406 Fabric Disposable Wrist Strap

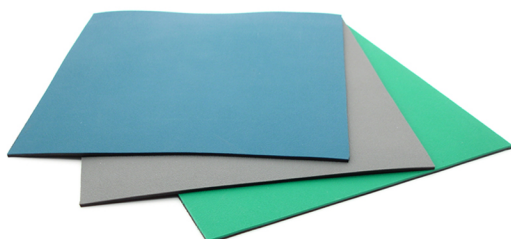


DISSIPATIVE RUBBER MAT

2 - LAYER T2

	Thickness	Top	Bottom	RTT	RTG
T2	.060"	<10 ⁹	<10 ⁸	10 ⁶ - 10 ⁸	10 ⁶ - 10 ⁸

DISSIPATIVE RUBBER MAT

2 - LAYER T2+

	Thickness	Top	Bottom	RTT	RTG
T2+	.080"	<10 ⁹	<10 ⁸	10 ⁶ - 10 ⁸	10 ⁶ - 10 ⁸

DISSIPATIVE VINYL MAT

3 - LAYER TYPE Z

	Thickness	Top	Bottom	RTT	RTG
Z	.120"	<10 ⁷	<10 ⁸	10 ⁷ - 10 ⁸	10 ⁶ - 10 ⁸

STATIC SOLUTIONS WITH SAVINGS

Green 2-Layer ESD Rubber Mat

B6223 2' x 3' mat w/hardware
B6224 2' x 4' mat w/hardware
B6225 2' x 5' mat w/hardware
B62304 30" x 4' mat w/hardware

B62250 2' x 50' roll
B62350 3' x 50' roll
B62450 4' x 50' roll
B623050 30" x 50' roll

Features: Type T2 rubber table mats dual layer design provide excellent electricals and durability and will withstand hot solder and chemical abrasion. It exceeds both EOS/ESD and Department of Defense requirements. All pre-cut mats come with attached snap and one B9703 common point ground.

Blue 2-Layer ESD Rubber Mat

B6123 2' x 3' mat w/hardware
B6124 2' x 4' mat w/hardware
B6125 2' x 5' mat w/hardware
B61304 30" x 4' mat w/hardware

B61250 2' x 50' roll
B61350 3' x 50' roll
B61450 4' x 50' roll
B613050 30" x 50' roll

Gray 2-Layer ESD Rubber Mat

B6423 2' x 3' mat w/hardware
B6424 2' x 4' mat w/hardware
B6425 2' x 5' mat w/hardware
B64304 30" x 4' mat w/hardware

B64250 2' x 50' roll
B64350 3' x 50' roll
B64450 4' x 50' roll
B643050 30" x 50' roll

Gray Premium 2-Layer ESD Mat

B6623 2' x 3' mat w/hardware
B6624 2' x 4' mat w/hardware
B6625 2' x 5' mat w/hardware
B66304 30" x 4' mat w/hardware

B66240 2' x 40' roll
B66340 3' x 40' roll
B66440 4' x 40' roll
B663040 30" x 40' roll

Features: Type T2+ premium rubber table mats dual layer design provide excellent electricals and durability and will withstand hot solder and chemical abrasion. It exceeds both EOS/ESD and Department of Defense requirements. All pre-cut mats come with attached snap and one B9703 common point ground.

Green Premium 2-Layer ESD Mat

B62823 2' x 3' mat w/hardware
B62824 2' x 4' mat w/hardware
B62825 2' x 5' mat w/hardware
B628304 30" x 4' mat w/hardware

B628240 2' x 40' roll
B628340 3' x 40' roll
B628440 4' x 40' roll
B6283040 30" x 40' roll

Blue Premium 2-Layer ESD Mat

B6523 2' x 3' mat w/hardware
B6524 2' x 4' mat w/hardware
B6525 2' x 5' mat w/hardware
B65304 30" x 4' mat w/hardware

B65240 2' x 40' roll
B65340 3' x 40' roll
B65440 4' x 40' roll
B653040 30" x 40' roll

Light Blue 3-Layer ESD Mat

B4123 2' x 3' mat w/hardware
B4124 2' x 4' mat w/hardware
B4125 2' x 5' mat w/hardware
B41304 30" x 4' mat w/hardware

B41250 2' x 50' roll
B41350 3' x 50' roll
B41450 4' x 50' roll
B413050 30" x 50' roll

Features: Botron's Type Z vinyl ESD table mats feature a unique three layer design, provide excellent electricals, and ergonomic comfort that only a foam back material can provide. It exceeds both EOS/ESD and Department of Defense requirements. All pre-cut mats come with attached snap and one B9703 common point ground.

Gray 3-Layer ESD Mat

B4623 2' x 3' mat w/hardware
B4624 2' x 4' mat w/hardware
B4625 2' x 5' mat w/hardware
B46304 30" x 4' mat w/hardware

B46250 2' x 50' roll
B46350 3' x 50' roll
B46450 4' x 50' roll
B463050 30" x 50' roll

**SEE PAGE 16 FOR
GROUNDING**



STATIC SOLUTIONS WITH SAVINGS

DISSIPATIVE RUBBER MAT

3 - LAYER T3

Blue ESD Mat

B3123 2' x 3' mat w/hardware
B3124 2' x 4' mat w/hardware
B3125 2' x 5' mat w/hardware
B31304 30" x 4' mat w/hardware

B31250 2' x 50' roll
B31350 3' x 50' roll
B31450 4' x 50' roll
B313050 30" x 50' roll

Gray ESD Mat

B3423 2' x 3' mat w/hardware
B3424 2' x 4' mat w/hardware
B3425 2' x 5' mat w/hardware
B34304 30" x 4' mat w/hardware

B34250 2' x 50' roll
B34350 3' x 50' roll
B34450 4' x 50' roll
B343050 30" x 50' roll

Green ESD Mat

B3223 2' x 3' mat w/hardware
B3224 2' x 4' mat w/hardware
B3225 2' x 5' mat w/hardware
B32304 30" x 4' mat w/hardware

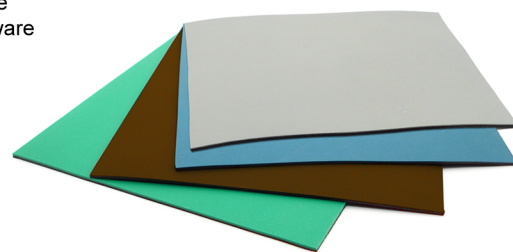
B32250 2' x 50' roll
B32350 3' x 50' roll
B32450 4' x 50' roll
B323050 30" x 50' roll

Brown ESD Mat

B3623 2' x 3' mat w/hardware
B3624 2' x 4' mat w/hardware
B3625 2' x 5' mat w/hardware
B36304 30" x 4' mat w/hardware

B36250 2' x 50' roll
B36350 3' x 50' roll
B36450 4' x 50' roll
B363050 30" x 50' roll

BEST SELLER!



Features: Type T3 dissipative three layer rubber table mat is .120" thick. It is reversible with a static dissipative top, foam center and black conductive underside. It will not burn and is chemical resistant. 50' long rolls are available in widths of 2', 30", 3' and 4'. It is also available in many pre-cut sizes with grounding hardware and common point ground. Choose from Blue, Gray, Green, and Brown colors. All mats meet EOS/ESD standards.

	Thickness	Top	Bottom	RTT	RTG
T3	.120"	<10 ⁸	<10 ⁶	10 ⁸ - 10 ⁸	10 ⁸ - 10 ⁸

DISSIPATIVE VINYL MAT

TYPE B+

Blue ESD Mat

B5123 2' x 3' mat w/hardware
B5124 2' x 4' mat w/hardware
B5125 2' x 5' mat w/hardware
B5126 2' x 6' mat w/hardware
B51304 30" x 4' mat w/hardware

B51250 2' x 50' roll
B513050 30" x 50' roll
B51350 3' x 50' roll
B51450 4' x 50' roll

- Solid vinyl construction
- Excellent electricals
- Reversible
- Easy to clean

Features: Type B+ mat is a solid vinyl design that provides excellent electricals and superior durability. Being constructed of solid vinyl means it's not only durable but it is also reversible. Type B+ exceeds both EOS/ESD and Department of Defense requirements. All pre-cut mats come with attached snap and one B9703 common point ground.



	Thickness	Top	Bottom	RTT	RTG
B+	.090"	<10 ⁷	--	10 ⁷ - 10 ⁸	10 ⁸ - 10 ⁸

Technical Operator Pad

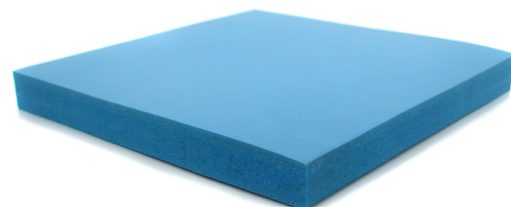
B5518 18" x 23" x 1/4" blue mat
B55240 2' x 40' x 1/4" blue roll

Disk Drive Mat

B5418 18" x 23" x 3/8" blue mat
B543060 30" x 60' x 3/8" blue roll
B54360 3' x 60' x 3/8" blue roll

- Available in 2 thicknesses
- Dissipative top layer
- Ergonomic
- Meets ANSI/EOS/ESD S20.20 Standards

Features: Type E Technical Operator Pad (TOP) and Type E+ Disk Drive Mat (DDM) are a soft vinyl foam material. TOP and DDM mats come in two thicknesses, 1/4" and 3/8" respectively, and provide comfort and can protect parts susceptible to physical shock and damage. They can be used on benches, carts, inside trays, shelves or to provide a static safe work area. No grounding is needed when used over a hard dissipative surface.

DISSIPATIVE VINYL FOAM
TYPE E/TYPE E+

	Thickness	Top	Bottom	RTT	RTG
E	1/4"	<10 ¹⁰	--	10 ⁸ - 10 ¹⁰	10 ⁸ - 10 ¹⁰
E+	3/8"	<10 ¹⁰	--	10 ⁸ - 10 ¹⁰	10 ⁸ - 10 ¹⁰



ANTI-FATIGUE FLOOR MATS

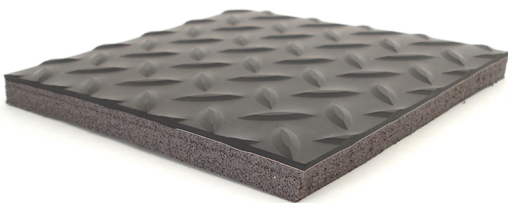
TYPE-SF



	Thickness	Top	Bottom	RTT	RTG
SF	1/2"	<10 ⁶	--	10 ³ - 10 ⁵	10 ³ - 10 ⁵

ANTI-FATIGUE FLOOR MATS

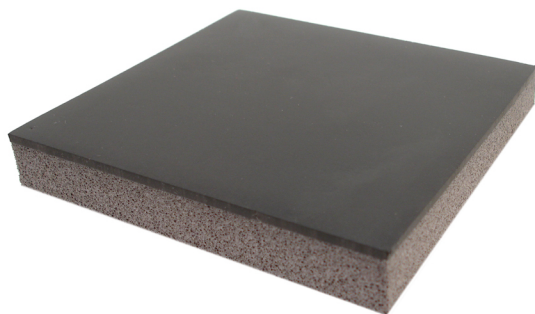
TYPE-DP



	Thickness	Top	Bottom	RTT	RTG
DP	HD - 9/16" SD - 1"	<10 ⁶	--	10 ⁵ - 10 ⁶	10 ⁵ - 10 ⁶

ANTI-FATIGUE FLOOR MATS

TYPE-CST



	Thickness	Top	Bottom	RTT	RTG
CST	HD - 1/2" SD - 7/8"	<10 ⁶	--	10 ⁵ - 10 ⁶	10 ⁵ - 10 ⁶



STATIC SOLUTIONS WITH SAVINGS

- 1/2" conductive vulcanized rubber
- Tapered edge
- Domed surface for added comfort
- Non-slip design
- Available in black

Soft Foot Rubber Floor Mats
B4423 2' x 3' mat w/hardware
B4434 3' x 4' mat w/hardware

Features: Conductive Soft Foot floor mats are designed to add comfort to hard surfaces. These slip and soil resistant mats are 1/2" thick. They exceed both EOS/ESD and Department of Defense requirements. Available in pre-cut floor mats with molded edges. Does not include grounding hardware.

- Durable vinyl top layer
- Non-slip design
- Easy to clean
- Anti-fatigue backing
- Long lasting

9/16" Heavy Duty Anti-Fatigue Floor Mats
B4023HD 2' x 3' mat w/hardware
B4035HD 3' x 5' mat w/hardware
B40325HD 3' x 25' runner
B40375HD 3' x 75' runner
B40475HD 4' x 75' runner

1" Super Duty Anti-Fatigue Floor Mats
B4023SD 2' x 3' mat w/hardware
B4035SD 3' x 5' mat w/hardware
B40325SD 3' x 25' runner
B40375SD 3' x 75' runner
B40475SD 4' x 75' runner

Features: Type DP diamond plate vinyl mats and runners are designed to reduce strain from standing on hard surfaces. These slip and soil resistant mats are available with or without foam anti-fatigue backing. They exceed both EOS/ESD and Department of Defense requirements. Available in black runners, and pre-cut floor mats with molded edges and grounding hardware.

- Durable 1/8" vinyl top layer
- Energy absorbing
- Reduces strain
- Non-slip design
- Lead-free RoHS compliant

1/2" Heavy Duty Anti-Fatigue Floor Mats
B5723HD 2' x 3' mat w/hardware
B5735HD 3' x 5' mat w/hardware
B57325HD 3' x 25' runner
B57375HD 3' x 75' runner
B57475HD 4' x 75' runner

7/8" Super Duty Anti-Fatigue Floor Mats
B5723SD 2' x 3' mat w/hardware
B5735SD 3' x 5' mat w/hardware
B57325SD 3' x 25' runner
B57375SD 3' x 75' runner
B57475SD 4' x 75' runner

Features: Type CST smooth top vinyl mats and runners designed to reduce strain from standing on hard surfaces. These soil resistant mats are 1/8" thick, available with or without foam anti-fatigue backing. They exceed both EOS/ESD and Department of Defense requirements. Available in black runners, and pre-cut floor mats with molded edges and grounding hardware.

STATIC SOLUTIONS WITH SAVINGS

ANTI-FATIGUE FLOOR MATS
TYPE-VR**Type-VR Anti-Fatigue Floor Mats****B7023** 2' x 3' mat w/hardware**B7035** 3' x 5' mat w/hardware**B70360** 3' x 60' runner**B70460** 4' x 60' runner

- Durable 3/8" thick vinyl/foam construction
- Beveled edge
- Anti-fatigue design
- Pebble embossed surface texture



Features: Type VR anti-fatigue floor mats provide excellent electricals, and durability. It exceeds both EOS/ESD and Department of Defense requirements. Available in gray runners, and pre-cut floor mats with hardware.

	Thickness	Top	Bottom	RTT	RTG
VR	3/8"	<10 ¹⁰	--	<10 ¹⁰	<10 ¹⁰

ANTI-FATIGUE FLOOR MATS
TYPE-S**Type-S Anti-Fatigue Floor Mats****BF435** 3' x 5' gray mat w/hardware**BF335** 3' x 5' brown mat w/hardware**BF436** 3' x 60' gray runner**BF3360** 3' x 60' brown runner**BF460** 4' x 60' gray runner


**AVAILABLE IN
THESE COLORS**



Features: Type S vinyl anti-fatigue floor mats provide excellent electricals, and durability. It exceeds both EOS/ESD and Department of Defense requirements. Available in gray and brown runners, and pre-cut floor mats with hardware.

	Thickness	Top	Bottom	RTT	RTG
TS	3/8"	<10 ¹⁰	--	<10 ¹⁰	<10 ¹⁰

ANTI-FATIGUE FLOOR MATS
TYPE-EM**Type-EM Anti-Fatigue Floor Mats****BEM220** 20" x 3' mat w/hardware**BEM35** 3' x 5' mat w/hardware**BEM36** 3' x 6' mat w/hardware**BEM320** 3' x 20' runner

- Durable 5/8" thick sponge rubber construction
- Cross hatch surface texture
- Reduces strain
- Dissipative top layer



Features: Type EM Conductive Sponge rubber mats and runners designed to reduce strain from standing on hard surfaces. These slip and soil resistant mats are 5/8" thick with beveled edges on all sides. It exceeds both EOS/ESD and Department of Defense requirements. Available in black runners, and pre-cut floor mats with hardware.

	Thickness	Top	Bottom	RTT	RTG
EM	5/8"	<10 ⁶	--	10 ⁵ x 10 ⁶	10 ⁵ x 10 ⁶



ANTI-FATIGUE FLOOR MATS
TYPE-CRC



	Thickness	Top	Bottom	RTT	RTG
CRC	HD - 5/8" SD - 1"	<10 ⁶	--	10 ⁵ - 10 ⁶	10 ⁵ - 10 ⁶

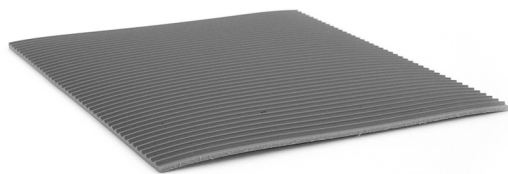
- Comfort anti-fatigue support
- Non-slip design
- Reduces strain
- Easy to clean

5/8" Heavy Duty Anti-Fatigue Floor Mats
B4723HD 2' x 3' mat w/hardware
B4735HD 3' x 5' mat w/hardware
B47325HD 3' x 25' runner
B47375HD 3' x 75' runner

1" Super Duty Anti-Fatigue Floor Mats
B4723SD 2' x 3' mat w/hardware
B4735SD 3' x 5' mat w/hardware
B47325SD 3' x 25' runner
B47375SD 3' x 75' runner

Features: Conductive CRC anti-fatigue floor mats and runners are designed to add comfort to hard surfaces. They feature a slip and soil resistant top and an anti-fatigue bottom that will reduce standing fatigue in the work environment. They exceed both EOS/ESD and Department of Defense requirements. Available in runners, and pre-cut floor mats with beveled edges and grounding hardware.

FLOOR MATS
TYPE-F



	Thickness	Top	Bottom	RTT	RTG
TF	1/8"	<10 ¹⁰	--	<10 ¹⁰	<10 ¹⁰

- Durable 1/8" thick vinyl
- Dissipative top layer
- Non-slip design

Solid Vinyl Floor Mats
BV435 3' x 5' gray mat w/hardware
BV4360 3' x 60' gray runner
BV4460 4' x 60' gray runner

Features: V-Groove non-slip floor mats provide excellent electricals and durability. It exceeds both EOS/ESD and Department of Defense requirements. Available in Gray runners, and pre-cut floor mats with hardware.

FLOOR MATS
TYPE-DPM



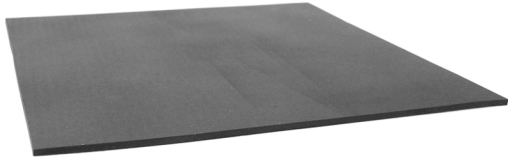
	Thickness	Top	Bottom	RTT	RTG
DPM	1/8"	<10 ⁶	--	10 ⁵ - 10 ⁶	10 ⁵ - 10 ⁶

- Durable 1/8" thick solid rubber
- Non-slip design
- Easy to clean

Solid Rubber Floor Mats
B4223 2' x 3' mat w/hardware
B4235 3' x 5' mat w/hardware
B42325 3' x 25' runner
B42375 3' x 75' runner
B42475 4' x 75' runner

Features: Type DPM diamond plate rubber mats and runners are slip and soil resistant mats, 1/8" thick and also available with or without 9/16" or 1" foam anti-fatigue backing (see p.11). They exceed both EOS/ESD and Department of Defense requirements. Available in Black runners, and pre-cut floor mats with molded edges and grounding hardware.

FLOOR MATS
TYPE-CS



	Thickness	Top	Bottom	RTT	RTG
CS	1/8"	<10 ⁶	--	10 ⁵ - 10 ⁶	10 ⁵ - 10 ⁶

- Smooth top
- Easy to clean
- Soil resistant

Solid Rubber Floor Mats
B4323 2' x 3' conductive mat w/hardware
B4335 3' x 5' conductive mat w/hardware
B43375 3' x 75' conductive runner
B43475 4' x 75' conductive runner

Features: Type CS smooth top rubber mats and runners are soil resistant mats, 1/8" thick and also available with or without 1/2" or 7/8" foam anti-fatigue backing (see p.11). They exceed both EOS/ESD and Department of Defense requirements. Available in Black runners, and pre-cut floor mats with molded edges and grounding hardware.



STATIC SOLUTIONS WITH SAVINGS

FIELD KIT
STANDARD**Standard Field Kit**

B1724 24" x 24" red field kit
B1725 24" x 24" blue field kit

**Pocket Field Kit**

B1715 15" x 20" pocket field kit

**Field Kit w/ pouch**

B1822 18" x 22" red field kit w/ pouch

Features: Designed as a portable ESD safe work surface, Botron's Field Kits come with adjustable ESD wrist strap and dual ground coil cord. Offered in three styles; the standard kit with two pouches, pocket kit for ultra portability, and the pouch kit for organized storage. All Field Kits are made of dissipative vinyl and meet S20.20, Mil -1686 & HDBK - 263 standards.

	Thickness	Top	Bottom	RTT	RTG
FK	.018"	<10 ⁸	--	10 ⁶ - 10 ⁸	--

PORTABLE ESD
SAFE SURFACE

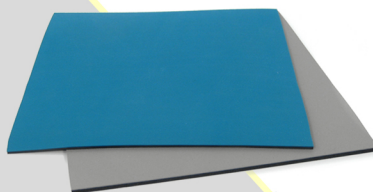
Features: Botron has made it easy to set up an ESD safe workstation with our new Workstation In A Box. Everything you need in one box, offered with either a 2' x 3' or 2' x 4' table mat and a 3' x 5' floor mat (available in three different materials). Choose from any type of the following floor matting: .080" two layer premium gray rubber, .080" solid black rubber or 1/8" V-Groove. Included in each kit is an adjustable wrist strap set (B9008), floor mat ground (B9701) and a 10' long common point ground (B9703).

**ESD Safe Workstation Kit**

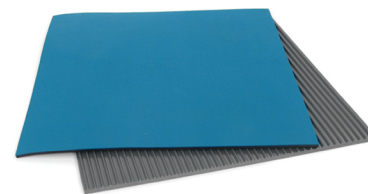
B6423KIT 2' X 3' gray .060 rubber table mat &
 3' x 5' gray .080 rubber floor mat
B6424KIT 2' X 4' gray .060 rubber table mat &
 3' x 5' gray .080 rubber floor mat

**ESD Safe Workstation Kit**

B6123CKIT 2' X 3' blue .060 rubber table mat &
 3' x 5' black solid rubber .060 rubber floor mat
B6124CKIT 2' X 4' blue .060 rubber table mat &
 3' x 5' black solid rubber .060 rubber floor mat

**ESD Safe Workstation Kit**

B6123KIT 2' X 3' blue .060 rubber table mat &
 3' x 5' gray .080 rubber floor mat
B6124KIT 2' X 4' blue .060 rubber table mat &
 3' x 5' gray .080 rubber floor mat

**ESD Safe Workstation Kit**

B6123VKIT 2' X 3' blue .060 rubber table mat &
 3' x 5' V-Groove gray 1/8" floor mat
B6124VKIT 2' X 4' blue .060 rubber table mat &
 3' x 5' V-Groove gray 1/8" floor mat



WORK SURFACE SNAPS & TOOL



Snap Tool

Features: Simple and effective tool for attaching snaps or studs to table and floor mats. For use with B9848 and B9849 grounding sets.

B9844 Snap tool

GROUNDING ADAPTERS



Alligator Clip

Features: High quality clip for grounding wrist straps, connects to a standard banana plug. (20 per bag)

B9841 Alligator Clip



Adapters & Ring Terminals

Features: Molded snap adapters, banana ring terminals, wire ring terminals and push & clinch ring terminals. Various configurations available. (20 per bag)

B9891 stacking snap w/#10 ring 3/8" female to 3/8" female to male



3/8" Snaps & Rivets

Features: 3/8" (10mm) studs for use with Snap Tool (B9844). An excellent way to be sure hardware is securely fastened to your ESD table mat. (100 sets per bag)

B9848 3/8" 10mm snaps & rivets - stud

B9849 3/8" 10mm snaps & rivets - socket



Push & Clinch w/ #10 Ring

Features: Ring terminal to push & clinch accepts standard banana jack. For #8 wire, #10 ring (20 per bag)

B9869 Push & Clinch w/ #10 ring



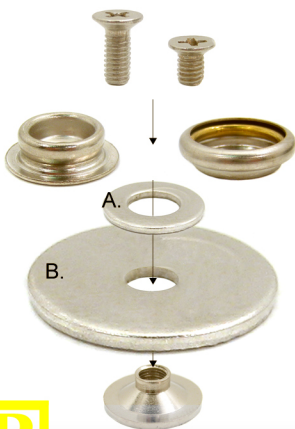
Ring to Banana Jack

Features: Ring terminal to banana jack accepts standard banana jack. (10 per bag)

B9879 #12 wire/#10 ring to banana jack

B9880 #8 wire/#10 ring to banana jack

WORK SURFACE SNAP KITS



Universal Snap Kit

Features: Fast and easy way to install 10mm snaps or studs to soft work station materials such as matting. Includes 2 screws (floor and table mat lengths). 1 each: 10mm socket, 10mm stud, washer (figure A) and screw base. (20 per bag). The universal 3-layer snap kit also includes 2 - 1.25" washers. (figure B)

B9865 Universal screw-in snap kit

B9866 Universal 3-layer snap kit



Push & Clinch Snaps

Features: Pronged 10mm sockets or 10mm studs. Easily installs onto multi-layer rubber or vinyl. Provides a strong contact for table matting. (20 per bag)

B9867 Push & Clinch snaps - stud

B9868 Push & Clinch snaps - socket

STATIC SOLUTIONS WITH SAVINGS

GROUNDS
COMMON POINT

Table Mat Ground

B9703 Low Profile Common Point Ground 10'



Features: 10' long straight cable with molded in 1 Meg Ohm resistor. 3/8" (10mm) snap ensures secure connection to table mats. Includes two banana jack receptacles for wrist straps. #10 ring terminal for connection to ground.



WORK BENCH

Bench Ground

B9742 Molded Bench Ground

B9743 Metal Bench Ground



Features: Molded enclosed box contains no metal edges and mounts under front edge of workstation. Includes a 10' long ground cable with #10 ring terminal connector. Two banana jack receptacles for secure ground connections. Two parking studs (4mm) for storing cords when not in use.



FLOOR MAT

Floor Mat Ground

B9701 Floor Mat Ground 10' 3/8"



Features: 10' long straight cable with no resistor and molded low profile mushroom cap. 3/8" (10mm) snap ensures secure connection to floor mats. #10 ring terminal for connection to ground.



QUAD GROUNDS
COMMON POINT

Quad Common Point Ground

B9704 Quad Ground No Resistor



Features: Low Profile molded enclosed box contains no metal edges and mounts under front edge of workstation. Includes a 10' long ground cable with #10 ring terminal connector. Four banana jack receptacles for secure ground connections.



STRAIGHT WIRE

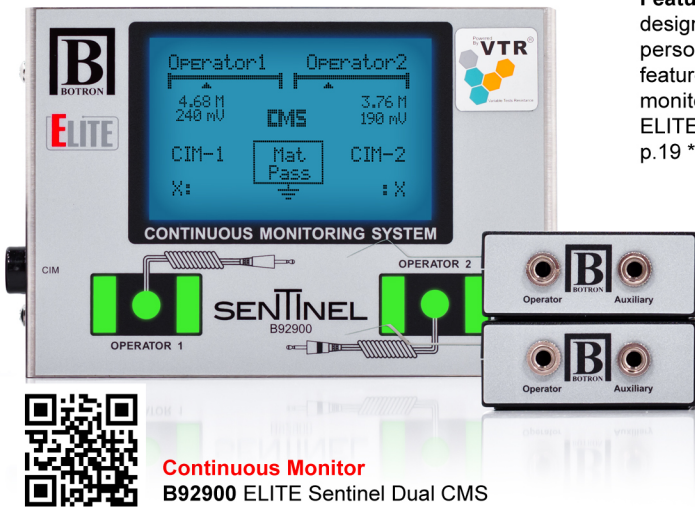
Straight Wire Ground

B9715 10' Straight Wire Ground 1/4"
Socket to Ring Terminal

Features: Black 10' long straight wire ground with 1/4" (7mm) snap to #10 ring terminal connections. No resistor.



STATIC SOLUTIONS WITH SAVINGS

MONITORS
TWO OPERATOR

Continuous Monitor
B92900 ELITE Sentinel Dual CMS

Features: The new state-of-the-art ELITE Sentinel two operator monitor is a revolutionary design that fuses the latest technology with current ANSI/ESD S20.20 compliance. Verify personnel and workbenches like no other continuous monitor has before. The ELITE features a large LCD that displays resistance of both the operator and mat as well as EOS monitoring and voltage in real-time. With built-in industry leading VTR technology, the ELITE helps prevent equipment failures and reduces latency on the assembly line (see p.19 *VTR Technology).

- Stainless Steel Housing
- 128 x 64 Graphical Display
- Visual Operator Status LED
- Event Indicator
- Dual Wire System
- Relay Output Control
- 4 3/4" x 3 1/4" x 1"

Test Voltage and Range

Power input 12VDC, 500mA 2.5mm Barrel Plug

Operator Test Voltage Open 600mV
Operator Test Voltage Close 200mV (2meg ohm loop)
Operator Test Range 0 to 12Meg Ohm

Mat Test Voltage Open 1.25V
Mat Test Voltage Close 1mV (5k to ground)
Mat Test Range 0 to 10Meg Ohm

Tool Test Range 1 to 5V (low voltage setting)
Tool Test Range 5 to 50V (high voltage setting)

CONTINUOUS
MONITORS

Continuous Monitors
B9201 One Operator Continuous Monitor



Continuous Monitors
B9202 One Operator & Mat Continuous Monitor



Continuous Monitors
B9203 Two Operator & Mat Continuous Monitor



Continuous Monitors
B92011 One Operator Continuous Monitor

Features: The Botron Continuous Monitors are designed to monitor resistance of both the work surface and the operator(s). They come with a LED and built in audible alarm, triggered when either the operator or work surface falls out of spec, becomes disconnected, or ground is lost. It is a fixed resistor system and is go no go, there is no calibration needed. A full time monitoring system is necessary to reduce latency on the assembly line.

CONTINUOUS
DUAL WIRE MONITORS

Features: The Botron Dual Wire Monitors are designed for dual wire wrist strap applications and monitor resistance of both the work surface and the operator(s). They come with a LED and a built in audible alarm, triggered when either the operator or work surface falls out of spec, becomes disconnected, or ground is lost. These units can only be used with mono jack connectors. It is a fixed resistor system and is go no go, there is no calibration needed.



Continuous Dual Wire Monitor
B92022 Dual Wire, Two Operator Monitor w/ two remotes



Continuous Dual Wire Monitor
B92021 Dual Wire, One Operator Monitor w/ remote

The B9203TB should be used to verify the B9201, B92011, B9202 and B9203 Constant Monitors.



B9203TB Test Box for single wire monitors

**CONSTANT MONITOR
VERIFICATION UNIT**

STATIC SOLUTIONS WITH SAVINGS

Surface Resistivity Audit Kit**B8572** Digital/Analog Audit Kit

Features: The most complete and accurate auditing tester on the market. Tests not only flooring and work surfaces, but grounds, garments, continuity and Ohms. Test voltages range from 10v - 500v. The large LCD displays not only real time test results but also test voltage. The B8572 Kit meets ANSI/ESD standards. It comes with probes and 2-5 lb weights packaged in a portable case.

- 3 Year Warranty
- Digital & Analog Readout
- 2 - 5lb Weights
- Displays Test Resistance & Ohm Meter
- Large Graphical Display
- Tests both A.C. & D.C. Voltage
- Meets ANSI/ESD S20.20
- Programmable Settings for Continuous Test

Surface Resistivity Audit Kit**B8582** Humidity & Temperature Survey Kit/Meter

Features: Botron's B8582 surface resistivity tester is used for measuring, but not limited to, work surfaces and flooring. It's easy to read LCD displays test results in scientific notation ranging from 10^3 @ 10v to 10^{12} @ 100v. It also records relative humidity and temperature which are important for accurate data recording and auditing. The B8582 can be used with or without the supplied electrodes, the back of the unit has built in leads that can be used to test any conductive or dissipative surface.

- Built-In Electrode Rails
- Digital Readout in Scientific Notation
- 2 - 5lb Weights
- Displays Temperature & Humidity
- Digital Display
- 10v - 100v Switch
- Meets ANSI/ESD S20.20
- Test Range from 10^3 to 10^{12}

**B8560** Surface Resistivity Tester**BSRM-6** Surface Resistivity Tester**B8562** 100v Surface Resistivity Tester
B8562KIT 100v Surface Resistivity Tester w/5lb weights and case.**BSRM-10** Surface Resistivity Tester

Features: Botron's series of surface resistivity testers are used for measuring, but not limited to, work surfaces and flooring. The testers' easy to read LEDs illuminate according to test results. These quick-test surface resistivity testers are light and portable and are ideal for on-the-spot testing of RTT and RTG (when using external probes).

AUDIT TEST KITS

DIGITAL/ANALOG**BEST SELLER!**AUDIT TEST KIT
ESD SURVEY

METERS

SURFACE RESISTIVITY**B8562 AVAILABLE
WITH 5lb. WEIGHTS**

STATIC SOLUTIONS WITH SAVINGS



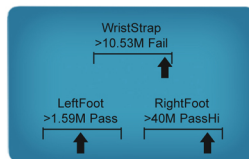
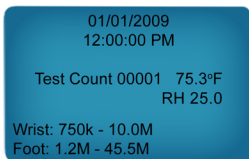
- All in one stand alone tester
- 30 volt test
- Built in VTR Technology
- Displays actual test resistance
- Test both wrist straps and footwear
- Stamps time, date, and test results
- Large graphical display 128x64
- ID Key Pad
- LED pass/fail indicators
- Audible pass/fail alarm
- RS232 communication
- Optional HID - Wiegand interface
- Ethernet ready

VTR Technology

The ELITE, using Variable Test Resistance technology, is the most accurate tester on the market. Each unit is embedded with our VTR software calibration system that reads to the thousandth of a resistance decade. Being hard-coded means no screw drivers, dip switches or default test to get within OEM specification. The ELITE saves you time. VTR allows us to simply flash each ELITE to spec. No more sending testers back to the manufacturer and having to pull out some back up tester while you wait for what can be weeks for factory calibration. The ELITE brings an end to down time.

Results that show.

All ELITE models come standard with a large 128x64 back lit LCD. That's about 3 times larger than any other tester in the industry. With a larger LCD the ELITE can display comfortably, the date, time, and most importantly the actual test resistance for wrist straps and both right and left feet on screen.



The ELITE doesn't stop there. The ELITE's built in VTR technology displays a threshold graph that visually informs the worker of where their test results place within the allowable test parameters. This allows the worker to monitor their ESD heel grounds and wrist straps from test to test and first, predict and then prevent failures.

One of the many draw backs of "on-demand" testers is really not knowing for certain the factory calibration settings. With the ELITE and it's VTR technology you do not have to refer to the data spec sheet. Whether you are auditor, supervisor, or metrology the ELITE will display calibration specifications and custom test parameters on screen.

Accuracy and reliability every test.

With the ELITE, testing at 30 volts is a precaution we took to avoid inaccurate tests that plague almost all other ESD testers on the market today.

There is a wide range of benefits that come with using a 30 volt test. This is why we made 30v standard on all ELITE models. Do you really know how accurate your current tester is or what voltage it is testing at? Chances are it's only sending out 9v and in that case it's not all that consistent.

While 9v is fine for ESD wrist straps, but sometimes unreliable for ESD shoes and heel grounders. What happens is dirt and other contaminants build up over usage and cause the resistance to go up. Therefore, 9v is more like 2v and no longer is a strong enough current to perform an accurate test. At a 1Gig load, the ELITE will easily cut through the increased resistance and perform tests safely above 18 volts.

Software Management System.

Tired of the headaches and limitations of other computer interface logging systems? Not only has the hardware come from years of R&D but the ELITE Software package has too. Designed to be not only user friendly it is virtually user independent. Automatic polling and email reporting means supervisors can go about their normal routine without the hassles of having to check reports on dedicated computers located on the work floor. Along with being able to be installed and function on a remote computer it can also be installed and work independently on a remote server.



STATIC SOLUTIONS WITH SAVINGS

ELITE

ACCESS CONTROL

- Bi-directional flow
- Network capable
- Stainless Steel body
- Rfid access control
- Barcode scanning
- LED flow indicators on top
- Built-in Wi-Fi

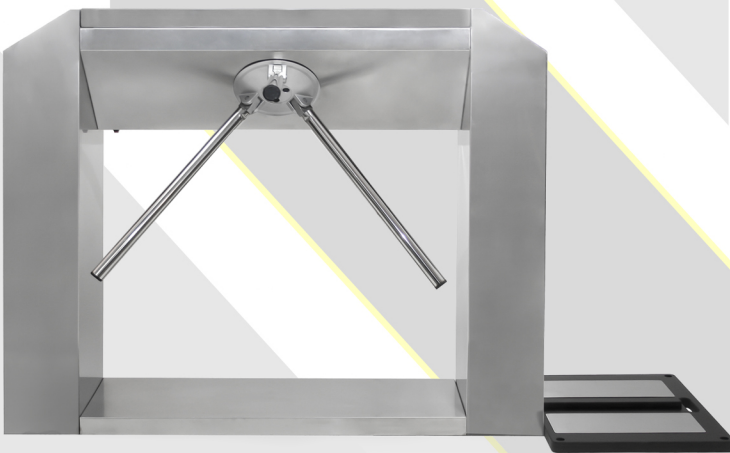


Flow management.

Protect your ESD sensitive work areas with Botrons' all-new ELITE Access Control turnstile system. A very manageable way to ease and organize employee traffic both in and out of the work environment.

Complete control.

The ELITE has access control, therefore giving you total control. With all the features of the ELITE Test System standard, not only can you control who's entering your labs, but now you can control what resistance is required to enter your ESD sensitive environment.



Bi-directional flow.

The Bi-Directional flow of the ELITE Access Control bridges gaps in the work environment no other test system has been able to do before. We all know ESD labs often times contain within themselves areas with different EOS/ESD requirements. You can now set up test stations within your labs to control access to specific areas that may call for more stringent requirements.



ELITE ESD Access Control Turnstile System

B88015 ELITE Complete Access Control Turnstile - Barcode

B88035 ELITE Complete Access Control Turnstile - HID

B88215 ELITE Complete Access Control Turnstile - Barcode, Wi-Fi

B88315 ELITE Complete Access Control Turnstile - HID, Wi-Fi

B89015 ELITE Basic Turnstile

ELITE ESD Wall Mount System

B88005 ELITE Complete Wall Mount - Barcode

B88025 ELITE Complete Wall Mount - HID

B88205 ELITE Complete Wall Mount - Barcode, Wi-Fi

B88305 ELITE Complete Wall Mount - HID, Wi-Fi

B89005 ELITE Basic Wall Mount



RS485

Ethernet

Wiegand



RS232

PLC Output

Laser Barcode

Power



9.2" L x 5.25" W x 1.7" H

TEST STATION

ELITE TEST SYSTEM

- 30 volt test
- Built in VTR Technology
- Tests both wrist straps and footwear
- Displays actual test resistance
- Network Capabilities
- HID and barcode reading
- Adjustable black stand
- Molded foot plate

ELITE ESD Test Station

- B88010** ELITE Complete TS w/barcode
- B88030** ELITE Complete TS w/HID
- B88210** ELITE Complete TS w/barcode, Wi-Fi
- B88310** ELITE Complete TS w/HID, Wi-Fi
- B89010** ELITE Basic TS



What happens if a worker grabs some equipment that is close to failure, tests and passes then heads out to the work area and fails on the line? Well that sounds like a costly oversight. Thankfully, these issues can now be avoided. Botron has developed a new test system, the ELITE, which can prevent those costly latent failures. Latency is the biggest problem in the ESD Industry. With the ELITE you have full control. Not only can its test parameters be set internally, with our patented VTR Technology you can also set a preventative fixed test limit that informs both the worker and supervisor of equipment in danger of failure. Thus, avoiding latent failures.

Take full control of your facility with the ELITE test system. Customize each users test requirements (stores over 100k users), adjust test parameters, adjustable failure threshold (Failure Prevention Mode). The ELITE, unlike other data logging systems, is not computer dependant and will not lose data if the computer or power goes down. [asdasda](#)

TEST STATION

DUAL & COMBO

Features: Botron's Dual Test Station is designed to withstand the rigors of daily use in the work environment. It is constructed of a powder coated steel frame with 2 individual solid aluminum foot plates. Our Dual Test Station comes with a **B82251** tester (see p.22) and will test both feet at the same time, and also can be switched to test wrist straps.

- 9 Volt Test
- Tests both right and left foot
- Tests wrist straps
- Wrist strap - 750k - 10Meg
- Footwear - 750k - 100Meg
- Powder coated steel frame
- 2 Solid aluminum foot plates

Dual Test Station

- B82250** Dual Tester w/stand
- B82252** Dual test stand only



Features: The B82450 Combo Test Station is made of the same high grade powder coated steel frame as the B82250. Standard equipment includes a single, solid aluminum foot plate and B8211 tester (see p.22). This combo test station will verify both wrist straps and footwear.

- 9 Volt Test
- Tests wrist straps
- Tests footwear
- Wrist strap - 750k - 10Meg
- Footwear - 750k - 100Meg
- Powder coated steel frame
- Solid aluminum foot plate

Combo Test Station

- B82450** Combo Tester w/ Stand
- B82452** Replacement plate 15" x 18"
- B82451** Combo Tester & 7" x 18" plate



Features: Botron's Deluxe Dual Test Station features a sleek adjustable black frame and molded foot plate. Wires simply slip into the frame and are hidden and kept safe from snagging and interference. With the new dual tester, personnel can verify wrist straps and any type of footwear ranging from heel grounders to conductive shoes.

- 9 Volt Test
- Tests both right and left foot
- Wrist strap - 750k - 12Meg
- Footwear - 750k - 120Meg
- Hidden cord construction
- Molded foot plate
- Adjustable black frame

Deluxe Test Station

- B8525** Deluxe Dual Test Station



Features: Botron's B8506 Wall Mount Test Station is an alternative to the B82450, for those that need wall hanging systems. It comes standard with a bright yellow back plate, a single solid aluminum foot plate, and B8211 tester.

- 9 Volt Test
- Tests wrist straps
- Tests footwear
- Wrist strap - 750k - 10Meg
- Footwear - 750k - 100Meg
- Bright yellow back plate
- Solid aluminum foot plate

Wall Mount Test Station

- B8506** Wall Mount Test Station
- B8506P** Replacement plate 7" x 18"



STATIC SOLUTIONS WITH SAVINGS

RESISTANCE TESTERS

WRIST & FOOTWEAR



**FOR MORE INFO
SEE PAGE 19 & 20**

ELITE ESD Tester

B88000 ELITE Complete - Barcode
B88020 ELITE Complete - HID
B88200 ELITE Complete - Barcode, Wi-Fi
B88300 ELITE Complete - HID, Wi-Fi
B89000 ELITE Basic



- Uses 9 volt battery
- Independently tests right & left foot
- Wrist strap - 750k - 10Meg
- Visual and audible alarms
- LED light indicators
- Low battery indicator

Wrist Strap Tester

B82251 Dual Footwear & Wrist Strap Tester



- Uses 9 volt battery
- Visual and audible alarms
- LED light indicators
- Large Test Plate
- Low battery indicator
- Wrist strap - 750k - 10Meg
- Footwear - 750k - 100Meg

Wrist Strap Tester

B8211 Touchplate Combo Tester



- Uses 9 volt battery
- Visual and audible alarms
- LED light indicators
- Large Test Plate
- Low battery indicator
- Wrist strap - 750k - 10Meg

Wrist Strap Tester

B8201 Touchplate Wrist Strap Tester

PORTABLE TESTERS

WRIST STRAP



- Portable
- 9 volt battery
- LED light indicators
- Low cost
- 2.25" x 3"

Portable Wrist Strap Tester

B8203 Portable Wrist Tester

- Portable
- 9 volt battery
- LED light indicators
- Low cost
- 3" x 4.5"

Portable Wrist Strap Tester

B8202 Portable Wrist Tester



WRIST STRAP & FOOTWEAR

CALIBRATION UNIT

Botron recommends, in accordance with ANSI/ESD S20.20, to test all personal grounding equipment prior to entering a ESDS work environment. It is important to make sure all personal grounding equipment, including smocks, wrist strap systems, footwear and heel grounders do not exceed ANSI/ESD S20.20 requirements.

*Calibration of all test equipment is an integral part to all ESD control programs. S20.20 7.3 suggest that a verification regimen shall be established and measurements are to be taken and documented to assure compliance with technical requirements.

- Verify wrist strap and footwear testers
- 2 test leads
- Selector dial
- Wrist strap range - 680k (low) - 11Meg (high)
- Footwear range - 680k (low) - 110Meg (high)

Calibration Unit

B85503 Calibration Unit



HIGH FREQUENCY OVERHEAD IONIZERS



B486102 2.5"H x 26"W x 5.8"D



B486103 2.5"H x 39.4"W x 5.8"D

BEST SELLER!



B486104 2.5"H x 47.3"W x 5.8"D

Botron's line of over head high frequency ionization equipment bring both performance and reliability to the workstation. The snap on fan grills make for stress free easy maintenance. There is no need to remove screws or use tools to access the fan blades and emitter pins.

- Decay < 2 sec @ 18"
- Slim light weight design
- Abnormal HV alarm
- Adjustable fan speed
- Removable fan grills
- Does not need calibration
- Green & Red LED Indicators
- Adjustable Air Flow Knob

Over Head Ionizers

- B486102** 2 Fan Overhead Ionizer
- B486103** 3 Fan Overhead Ionizer
- B486104** 4 Fan Overhead Ionizer

HIGH FREQUENCY BENCH TOP IONIZERS



- Decay < 1.5 sec @ 18"
- Dual Fans
- Abnormal HV alarm
- Adjustable blowing angle
- Adjustable fan speed

Bench Top Ionizers

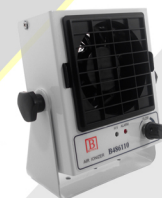
- B486150** Two fan high frequency bench top ionizer - 18.3" x 7"



- Decay < 1.5 sec @ 18"
- Light weight and compact design
- Abnormal HV alarm
- Adjustable blowing angle
- Adjustable fan speed

Bench Top Ionizers

- B486121** Single fan high frequency bench top ionizer - 7.5" x 7"



- Adjustable Blowing Angle
- Quick Access Clip Design
- Green and Red LED Indicators
- Abnormal HV alarm
- Decay < 3 sec @ 18"

Bench Top Ionizers

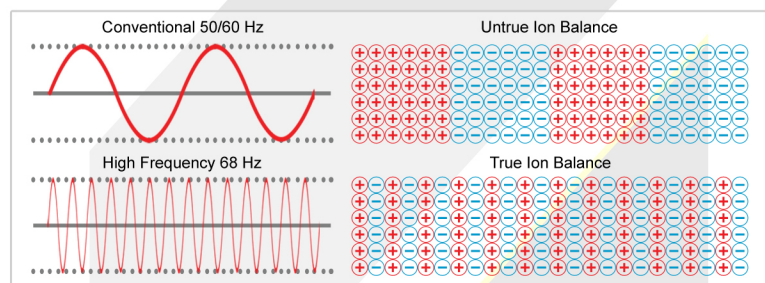
- B486110** Small high frequency bench top ionizer - 5.5" x 5.5"

High Frequency Ionization vs DC Ionization

High Frequency Ionization is the newest advancement in ionization. It not only excels in the two most important aspects of ionization, both balance and decay time, but it is superior to any other type of ionizer on the market.

1. Balance - Unlike DC ionization, High Frequency is not dependent on it's air flow to balance ions. So where as DC ionization has dedicated emitters, one for POS and one for NEG, each HF electrode alternates both POS and NEG ions from each emitter point. When a system like DC ionization relies on it's air flow to balance ions, sometimes it's fan speeds are changed. This creates what is known as hot spots. Because HF is 1:1 and produces more electrons at a more rapid rate than DC, you will always have true balance in operational range.

2. Decay - HF Ionization, at a rate of 18k per second, produces more positive and negative ions than DC. By emitting ions more rapidly, any field or human introduced charges at the work bench are thus neutralized faster. Systems like DC Ionization that rely on more airflow can often times disrupt the workstation increasing the time it takes to neutralize and puts you at more risk of ESD events.



**SEE PAGE 25 FOR
AUDIT EQUIPMENT**



STATIC SOLUTIONS WITH SAVINGS

Features: The B486615AG ionizing gun is the perfect solution for those who need pin point ionization of static sensitive parts. While eliminating static charge, it also removes any charged particles or debris that can collect on components. The hand held design also provides the freedom of use for operators.

Blow-Off Gun

B486615AG Blow-Off Gun

- Auto ion balance
- Abnormal HV alarm
- Uses both compressed air and nitrogen
- LED indicators
- 8' hose

HIGH FREQUENCY
IONIZING GUN

Features: The B48614SF ionizing Snake is the perfect solution for those who need pin point ionization of static sensitive components. While eliminating static charge, it also removes any charged particles or debris that can collect on components. The adjustable neck provides the freedom of use for operators as well as precision ionization.

Ionizing Snake

B48614SF Ionizing Snake

- Auto ion balance
- Abnormal HV alarm
- Adjustable neck
- LED indicators
- Built in HV power supply
- Alloy discharge needle

HIGH FREQUENCY
AIR SNAKE

Features: The Botron piezoelectric ionization air nozzle is designed to eliminate static charge and other harmful contaminants. As with our other ionizers the B48NOP-S features an abnormal HV alarm and ionization indicator. It's uniquely compact design make this unit very versatile in tight areas that require ionization.

Ion Air Nozzles

B48NOP-S Ion Air Nozzle w/ NOP-60S tip

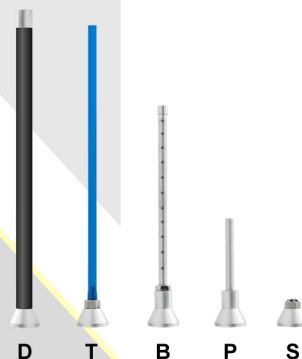
B48NOP-P Nozzle Tip

B48NOP-T Nozzle Tip

B48NOP-D Nozzle Tip

B48NOP-B Nozzle Tip

B48NOP-60S Nozzle Tip (shown on Ion Air Nozzle)

HIGH FREQUENCY
AIR NOZZLE

Features: Botron's Neutralizing Static Bars are fixed, designed to eliminate static charging. Used in electronics, printing and other industries. Power supply sold separately.

- Cut to fit size
- Used with B487000 HV power supply
- Operating voltage 110 or 220V

Static Bar

B488000 Static Bar

High Voltage Power Supply

B487000 HV Power Supply

NEUTRALIZING
STATIC BAR

ELECTROSTATIC FIELD METER

STATIC SOLUTIONS WITH SAVINGS



ELITE AIM
B48382 Audit Ionization Meter



The Botron AIM Audit Ionization Meter is a compact, portable survey instrument for measuring electrostatic charge and ion balance. The AIM measures electrostatic charges up to 20 kV (20,000 V) at a distance of 1" (25 mm). Results are simultaneously displayed both numerically and in bar graph format on the large LCD. Also great for measuring ion balance on your workbench, the AIM will display ionization and polarity from -200V to +200V.

- Measures Static Charge and Ion Balance
- LCD with Digital Readout
- Dual Bar Graph Display for +/- Polarity
- Realtime Results
- Auto Shut Off
- Audible Alarm

Measuring Range

Static Voltage - 0 to ± 1.49 kV (Lo range)
Static Voltage - ± 1.0 kV to ± 20.0 kV (Hi range)
Range hysteresis - ± 1.0 kV to ± 1.5 kV

Ion Balance - 0 to ± 200 V

Physical Properties

Power Source - 9V Battery
Size - 4 7/8" \times 2 7/8" \times 1"
Weight - 6oz.

IONIZATION AUDIT EQUIPMENT



Charge Plate Monitor
B486288 Charge Plate Monitor

Features: Botron's B486288 Charge Plate Monitor with data storage capabilities measures and stores positive and negative decay as well as ion balance and stamps temperature, humidity, time, and date. Fully programmable test functions, with ability to run a series of automated tests with the push of a button. The B486288 will not leave you limited like other charge plates on the market. Comes with bundled software for easy management of your equipment.

- Stores 1500 tests, 500 locations & 4 Protocols
- Manual & Automated Testing
- Fully Configurable Testing Parameters
- Software Included

DATA STORAGE CAPABILITIES



Features: Designed as an add-on for the B48282C (left) will charge the B48282 (right), permitting it to test and monitor the balance of ionization devices.

Electrostatic Charger
B48282C Electrostatic Charger & Plate
B48282KIT Charger, Meter & Plate



Features: The B48282 is a portable field meter used for detecting and measuring static potentials. Optional charge plate used to measure ionization.

Electrostatic Field Meter
B48282 Electrostatic Field Meter



Features: The ultra-portable B48281 is a low cost alternative to the B48282, and is used to measure electrostatic charges.

Digital Field Meter
B48281 Low Cost Digital Field Meter



STATIC SOLUTIONS WITH SAVINGS

Botron's BAVC20 and BAVCG20 are clean room compatible vacuum sealers that prevent particle generation and oil contamination. They feature one button touch sealing, preset vacuum controls and a large 22" x 22" x 4" stainless steel vacuum chamber that ensures clean, wrinkle-free seals without any bag distortion.

Vacuum Sealers

BAVC20 22" x 22" x 4" non gas

BAVCG20 22" x 22" x 4" w/ gas purge

**SEE PAGE 27 FOR
VACUUM BAGS**

The BAVS20 was designed for heavy-duty applications. Side mounted heat and cool timers fitted to a powder coated steel chassis regulate seal parameters that are critical to obtaining airtight/watertight seals. Comes with a steel encased foot switch providing hands-free operation.

Vacuum Sealers

BAVS20 20" x 1/4" seal

Botron's BAVN series are foot pedal activated gas-flush vacuum systems. With a 1/4" (10mm optional) wide sealing element the BAVN series delivers a leak proof seal for electronic devices that require moisture barrier bags. The BAVN series are clean room compatible and it's gas-flush feature can be switched off for impulse heat only sealing.

Vacuum Sealers

BAVN20 20" x 1/4" seal

BAVN25 25" x 1/4" seal

BAVN30 30" x 1/4" seal

BAVN35 35" x 1/4" seal

Conductive Bags

B17046 4" x 6"

B17610 6" x 10"

B17810 8" x 10"

B171012 10" x 12"

B171216 12" x 16"



Conductive Tubing

B17000/5 5" x 500' 4mil

B17000/8 8" x 500' 4mil

B17000/10 10" x 500' 4mil

B17000/12 12" x 500' 4mil



Botron's Conductive Bags and Tubing are made of a volume conductive material designed for specialized storage or packaging. Both the conductive bags and tubing are heat-sealable and can be easily grounded. Botron's Conductive Liners and Waste Bins do not hold a static charge. Our liners are perfect for lining waste containers used for wet or dry chemicals that can be ignited by sparks created by static.

VACUUM SEALER

CHAMBER

BAVC

Seal Length: 20"

Seal Width: 1/4" (10mm opt.)

Vacuum Flow: 18 CFM

Max. Vacuum Pressure: 28.5 inHg

Air Requirements: 18 CFM@90PSI

Amps @ 120 Volts A.C.: 6

Unit Size (in): 28L x 24W x 9.5h

Approx. Weight: 118 lbs



VACUUM SEALERS

IMPULSE

BAVS

Seal Length: 20"

Seal Width: 1/4" (10mm opt.)

Vacuum Flow: N/A

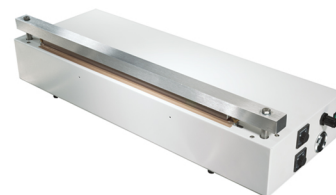
Max. Vacuum Pressure: N/A

Air Requirements: 1 CFM@90PSI

Amps @ 120 Volts A.C.: 6

Unit Size (in): 28L x 10W x 7h

Approx. Weight: 29 lbs



BAVN

Seal Length: 20", 25", 30", 35"

Seal Width: 1/4" (10mm opt.)

Vacuum Flow: 3 CFM

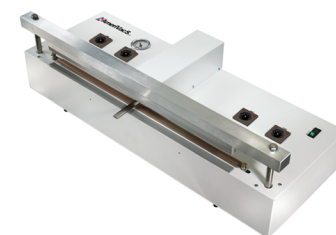
Max. Vacuum Pressure: 27 inHg

Air Requirements: 5 CFM@90PSI

Amps @ 120 Volts A.C.: 6, 7, 12, 15

Unit Size (in): 28,33,38,43 x 10 x 7

Approx. Weight: 33, 40, 50, 54 lbs



CONDUCTIVE

BAGS & LINERS

Conductive Waste Bin

B17157 14.5" x 15" 7gal



Conductive Liners

B171824 18" x 24" 5gal

B172424 24" x 24" 10gal

B173036 30" x 36" 30gal

B173858 38" x 58" 55gal



ESD SHIELDING BAGS

METAL-IN

- Metal-In
- Longer Lasting
- 40% Light Transmission
- Puncture Resistant
- Outer Layer Dissipative

Features: Botron's antistatic shielding bags are metal-in and low tribocharging. Thus, ESD sensitive materials stored inside the bag will not generate a charge. The 3mil thick lining is puncture resistant and protects against corrosive materials. Comes with either zipper or flat applications.

Metal-In Shielding Bag

B13035 3" x 5"
B13046 4" x 6"
B13048 4" x 8"
B13424 4" x 24"
B13058 5" x 8"
B13068 6" x 8"
B13610 6" x 10"
B13624 6" x 24"
B13630 6" x 30"

B13812 8" x 12"
B13816 8" x 16"
B13824 8" x 24"
B131012 10" x 12"
B131014 10" x 14"
B131016 10" x 16"
B131218 12" x 18"
B132430 24" x 30"

Metal-In Shielding Zip

B12035 3" x 5"
B12046 4" x 6"
B12048 4" x 8"
B12058 5" x 8"
B12068 6" x 8"
B12816 8" x 16"

B12824 8" x 24"
B121012 10" x 12"
B12610 6" x 10"
B12624 6" x 24"
B12812 8" x 12"

MOISTURE BARRIER BAGS

SEAL-IT

Features: Botron's Moisture Barrier Bags are a 3.6 mil multi-layer construction specially formulated to provide a safe and effective package for your ESD and moisture sensitive products. This highly flexible structure is easy to vacuum and seal. Meets all IPC/JEDEC J-STD-033 standards and specification 6 mil also available .

Moisture Barrier Bag

B14068 6" x 8"
B14424 4" x 24"
B14058 5" x 8"
B14610 6" x 10"
B14624 6" x 24"

B14630 6" x 30"
B14812 8" x 12"
B141012 10" x 12"
B141218 12" x 18"

PINK POLYETHYLENE

ANTI-STATIC

Features: Botron's antistatic polyethylene bags do not generate triboelectric charges under normal working conditions. They should be used to package non-static sensitive components in the work environment that may generate or carry static charge.

Pink Anti-Static Bag

B16035 3" x 5"
B16046 4" x 6"
B16058 5" x 8"
B16610 6" x 10"

B16812 8" x 12"
B13824 8" x 24"
B161012 10" x 12"
B161014 10" x 14"

Pink Anti-Static Zip

B16035Z 3" x 5"
B16046Z 4" x 6"
B16058Z 5" x 8"
B16610Z 6" x 10"
B16812Z 8" x 12"

Anti-static Bubble Bag

B15046 4" x 6"
B15068 6" x 8"
B15810 8" x 10"
B151016 10" x 16"
B151218 12" x 18"

ESD SHIELDING BAGS

METAL-OUT

Features: Botron's antistatic shielding bags are metal-out and low tribocharging. Thus, ESD sensitive materials stored inside the bag will not generate a charge. The 3mil thick lining is puncture resistant and protects against corrosive materials. Comes with either zipper or flat applications. Provides rapid charge dissipation and 30% light transmission.

Metal-Out Shielding Bag

B24035 3" x 5"
B24046 4" x 6"
B24058 5" x 8"
B24610 6" x 10"
B24810 8" x 10"
B24812 8" x 12"
B241012 10" x 12"
B241014 10" x 14"

Metal-Out Shielding Zip

B24035Z 3" x 5"
B24046Z 4" x 6"
B24058Z 5" x 8"
B24810Z 8" x 10"
B24812Z 8" x 12"
B241012Z 10" x 12"

**SEE PAGE 26 FOR
VACUUM SEALERS**



STATIC SOLUTIONS WITH SAVINGS

ESD AWARENESS

LABELS



Awareness Labels

B6736 4" x 4" Label 250/R
B6736/5 4" x 4" Label 500/R
B6735 2" x 2" Label 500/R
B6735R 2" x 2" Label 500/R
B6734 5/8" x 2" Label 500/R



Awareness Labels

B6728 4" x 4" Label 250/R
B6728/5 4" x 4" Label 500/R
B6727 2" x 2" Label 500/R
B6725 5/8" x 2" Label 500/R



Writeable Labels

B6712 1-3/4" x 2-1/2" Writeable Label 500/R JEDC-1



Reusable Labels

B6713 1-3/4" x 2-1/2" Reusable Label 500/R JEDC-1



Lead Free Labels

B67101 3 color Lead Free 2" x 2" labels 500 per roll



Lead Free Labels

B67102 1 color Lead Free 2" x 2" labels 500 per roll

Label Dispenser

B6702 Label Dispenser

Holds two 2" rolls or one 4" roll

B6702-3 Label Dispenser

Holds two 3" rolls or one 4" & 2" roll



ANSI/ESD S20.20

8.3 ESD Protected Areas (EPAs)

Caution signs indicating the existence of the EPA shall be posted and clearly visible to the personnel prior to entry to the EPA.

ESD AWARENESS

SIGNS



ESD Awareness Signs

B6747 Sign RS-471 4" x 10" w/ Adhesive Backing 10/pk

B67410 Lead Free Area Sign 4" x 10" w/ Adhesive Backing 10/pk



Bench Signs

B6716 Bench Sign 1" x 6" w/ Adhesive Backing 10/pk

B67016 Lead Free Bench Sign 1" x 6" w/ Adhesive Backing 10/pk



Hanging Signs

B6720 10" x 20" Double-sided Hanging Sign 3/pk



Adhesive Signs

B6717 11" x 17" ESD Awareness Poster w/ Adhesive Backing 5/pk



STATIC SOLUTIONS WITH SAVINGS

CONDUCTIVE
BRUSHES**B09927** Conductive Brush 3.75" x 2.75"

Features: Botron conductive brushes are great for cleaning printed circuit boards (PCB) and other static sensitive components. Safely remove dust, dirt particles and static charge while grounded.

**B09920** 5" x 1/4"**B09921** 6" x 1/2"**B09922** 6" x 3/4"**B09924** 7" x 1.5"**B09925** 7" x 2.25"**B09926** 9" x 3.5"**B09622** 6" PCB Probe

Features: Botron's PCB probe is a multi-probe with a forming tip at one end used when soldering and at the other end a hooking tip for holding wires.

CARBON STEEL
CUTTERS/STRIPPERS**B09170G****B09170P****B09120**

Features: Micro Shears and Wire Strippers are used for making flush cuts and trimming wires on the production line in non-ESD applications.

B09170G 5" Micro Shear**B09170P** 5" Micro Shear**B09120** B-stripper 10-20 AWG**B09125** B-stripper 20-30 AWGESD SAFE
CUTTERS/STRIPPERS**B0915****B0901****B0924**

Features: Botron's Conductive Micro Shears and Wire Strippers are used for making flush cuts and trimming wires on the production line in ESD sensitive applications.

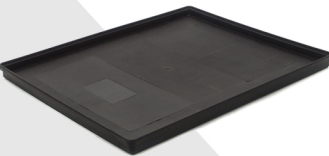
B0901 5" Micro Cutters 16 AWG**B0910/50** 5" 50 Micro Cutters 16 AWG**B0915** 6" Long nose slim pliers**B0920** 6" Bent nose pliers**B0923** 6" Wire stripper 10-20 AWG**B0924** 6" Wire stripper 20-30 AWGCONDUCTIVE
TWEEZERS**01****02****03****04****05****06****08**

Features: Conductive Tweezers are ideal for handling small delicate components. They are also cleanroom safe and make a great solution when assembly needs both care and precision.

B09901 4.7" Tweezers**B09902** 4.6" Tweezers**B09903** 4.8" Tweezers**B09904** 4.7" Tweezers**B09905** 4.8" Tweezers**B09906** 4.7" Tweezers**B09908** 4.7" Tweezers

STATIC SOLUTIONS WITH SAVINGS

CONDUCTIVE
TRAYS



Conductive Trays
B09501 14.5" x 11.8" x .06" lip
B09506 25.75" x 17.8" x 1.125" lip



Conductive Trays
B09502 14.5" x 9.8" x 2.6" lip



Conductive Trays
B09503 12.4" x 9" x 1.6" lip



Conductive Trays
B09504 17.7" x 11.4" x 2.3" lip

Features: Botron's conductive trays are for handling electronic components and board assemblies. They have excellent resistance to abrasion. Conductive trays provide effective ESD protection at <10⁶ for handling static sensitive products and equipment. All trays meet ANSI/ESD S20.20.

Conductive board holders are the ideal solution for storing PCB boards on an assembly line. Both the B19026 and B19025 come with 25 slots. The B19026 features a back support that provides extra rigidity and safety. The B19025 is designed with wider slots to handle oversized PCB's. All Botron Conductive PCB board holders are <10⁶ and meet ANSI/ESD S20.20.

Material:	Conductive polypropylene
Electrical's	<10 ⁶ ASTM-D257
Surface Resistivity:	<10 ⁶ ASTM-D257
Volume Resistivity:	<0.05 seconds Fed Std 101
Charge Decay:	Method 4046
Distortion:	100c
Tensile Strength:	18psi min

Features: Botron's conductive foam is used to protect static sensitive devices and components in a variety of manufacturing and packaging applications. This polyurethane open cell foam comes in both high density 3.1lb and low density 1.9lb. Our conductive foam comes in a variety of different thicknesses in a 24" x 36" sheet size.

Conductive Foam
B1208 1/8" Low Density
B1204 1/4" Low Density
B1238 3/8" Low Density
B1205 1/2" Low Density
B1275 3/4" Low Density
B1201 1" Low Density

Conductive Foam
B1308 1/8" High Density
B1304 1/4" High Density
B1338 3/8" High Density
B1305 1/2" High Density
B1375 3/4" High Density
B1301 1" High Density

Features: Botron's conductive cross-linked foam is used to protect static sensitive devices and components in a variety of manufacturing and packaging applications. This polyethylene foam is closed-cell and comes in a 3.1lb density. Our cross-link foam is a special order product, please call for more information.

Cross Linked Foam
B1404 1/4" Crosslinked
B1408 1/8" Crosslinked

**GREAT FOR
LEAD INSERTION**

CONDUCTIVE
BOARD HOLDERS



Conductive Board Holders
B19026 10.2" x 8" x 3.7"



Conductive Board Holders
B19025 19" x 6.8"

CONDUCTIVE
FOAM



CONDUCTIVE
CROSS-LINK FOAM



CLEANSTAT FLOOR CARE

STATIC SOLUTIONS WITH SAVINGS



NEW FORMULA!

Botron's new Premier Static Dissipative ESD Polymer Floor Finish is designed to dissipate static charges and eliminate static generation. Coverage of 1500-2000 sq feet per gallon.

ESD Floor Finish

B8101 ESD floor finish 1gal
B8105 ESD floor finish 5gal
B8155 ESD floor finish 55gal



Routine maintenance of ESD treated floors with Botron's Easy Clean is recommended to uphold the integrity and longevity of your ESD floor. Coverage when diluted 10-1 ratio over 2000 sq. feet per gallon.

ESD Floor Cleaner

B8301 ESD floor cleaner 1gal
B8305 ESD floor cleaner 5gal



Botron Easy Buff should be used in spot applications to remove scurf marks and other blemishes on your ESD floor.

StatCare Spray Buff

B8400 Spray Buff 1qt
B8401 Spray Buff 1gal

STATCARE EPOXY CONCRETE FINISH



**AVAILABLE IN
THESE COLORS**



Meets Standards:
Resistivity-ASTM D257

Electricals:
Resistance Top to Top <108
108-9 Ohms 2 Max/Cm2 @ 40% Relative Humidity

StatCare Static Dissipative Concrete Finish is designed to dissipate static charges and stop static generation. It will provide a durable, UL approved, slip resistant finish and can be applied on sealed concrete. It's water-based epoxy/acrylate formula is extremely resistant to chemicals and solvents. Our ESD Concrete Finish is superior to and will outlast latex and urethane floor paints. Coverage of 300-400 sq. feet per gallon. Recommended 3 coats.

StatCare ESD Epoxy Floor Paint

B8771G Gray Concrete Finish 1 gallon
B8775G Gray Concrete Finish 5 gallon

B8771LG Light Gray Concrete Finish 1 gallon
B8775LG Light Gray Concrete Finish 5 gallon

B8771B Beige Concrete Finish 1 gallon
B8775B Beige Concrete Finish 5 gallon

RUBBER & VINYL MAT CLEANER



Botron's Cleanstat rubber & vinyl cleaner can be used on, but not limited to, ESD table mats and floor mats to remove blemishes and dirt as well as enhance ESD properties. It is recommended to clean test weights and mats during audits for the most accurate readings.

Rubber & Vinyl Mat Cleaner

B8011 6oz
B8018 1qt (32oz)



Botron's anti static hand lotion is specially formulated to improve contact between personnel and grounding devices.

- Non-contaminating
- Contains no silicone's
- Moisturizing aloe vera
- 8 oz. Bottle

ESD Safe Hand Lotion

B8008 8oz Squeeze Bottle



STATIC SOLUTIONS WITH SAVINGS

Standard Tacky Mats

B6923 24" x 36"

B6945 26" x 45"

Features: Botron's Standard Tacky Mats are designed to significantly reduce foot and wheel contamination. The residue free mats use a tacky adhesive to remove particles from shoes and wheels. Tacky mats are low profile to be used without a frame and feature numbered peel tabs on each sheet for easy to remove layers.

TACKY MATS STANDARD



Bouffant Caps

B20012 24" Bouffant caps - 1000ct

Features: Botron's breathable, low linting bouffant caps are used to protect the environment from the shedding of hair, and are constructed of lightweight, non-woven spunbond polypropylene fabric.

Face Masks

B20005 7" Face mask 3ply - 1000ct

Features: The disposable B20005 is a non-linting and non woven face mask. It features a floss covered elastic ear loop for comfort and support as well as a flexible sewn-in nose adjustment for a secure fit. With a high 95% BFE(Bacteria Filtration Efficiency) and low breathing resistance the B20005 offers great protection against airborne particles.

CLEANROOM WEAR



**BLOCKS 95%
OF BACTERIA**

Cleanroom Paper

B20811-W 8.5" x 11" 250 sheets 10 reams/case

B20811-B 8.5" x 11" 250 sheets 10 reams/case

B20811-G 8.5" x 11" 250 sheets 10 reams/case

B20811-Y 8.5" x 11" 250 sheets 10 reams/case

B201117-W 11" x 17" 250 sheets 5 reams/case

B201117-B 11" x 17" 250 sheets 5 reams/case

B201117-G 11" x 17" 250 sheets 5 reams/case

B201117-Y 11" x 17" 250 sheets 5 reams/case

B20911 9.5" x 11" continuous feed 3000/case

Features: Uniquely formulated to reduce particulation and smudging. Ideal for controlled environments such as clean rooms and other static free zones. Lays flat and works great in mechanical printing machines. Available in (W)white, (B)blue, (Y)yellow, and (G)green.

CLEANROOM PRODUCTS



Cleanroom Wipes

B20099 Polyester/Cellulose Non-woven

9" x 9" - 300 per pack/12 packs per case

B201212 Polyester/Cellulose Non-woven

12" x 12" - 150 per pack/10 packs per case

B20199 100% Polyester Clean Room Safe

9" x 9" - 150 per pack/8 packs per case

Features: Botron's Cleanroom safe wipes are offered in 100% polyester as well as a non-woven 55% cellulose/45% polyester blend. Both wipes are ideal for class 100 cleanroom environments. Our 100% polyester wipes feature laser sealed edges for maximum fiber retention. The Non-woven wipes are chemical resistant to most cleaning agents and are ideal for wiping ESD sensitive components.



PROTECTIVE GLOVES

STATIC SOLUTIONS WITH SAVINGS



White lint free ESD safe gloves are made of 100% polyester. Features a conductive weave every 10 millimeters for a reliable path to ground. Available in small, medium and large. (packs of 10 pairs).

ESD Lint Free Gloves

B6851 Lint Free - Sml
B6852 Lint Free - Med
B6853 Lint Free - Lrg



Nitrile gloves are made from 100% nitrile which resists punctures and are Class 100 cleanroom ready. They offer amazing sensitivity and reduces hand fatigue. This unique formulation makes these disposable gloves last much longer than latex or vinyl, and are ambidextrous. Both 5 mil or 6 mil available in sizes of small, medium, large and X-large. 100 per box.

Nitrile Gloves

B6861 Nitrile - Sml/ 5mil
B6862 Nitrile - Med/ 5mil
B6863 Nitrile - Lrg/ 5mil
B6864 Nitrile - XL/ 5mil
B6871 Nitrile - Sml/ 6mil
B6872 Nitrile - Med/ 6mil
B6873 Nitrile - Lrg/ 6mil
B6874 Nitrile - XL/ 6mil



Static dissipative gloves with sure grip PVC dots provide a non-slip grip when handling electronic components. Available in small, medium and large. (packs of 10 pairs).

ESD Safe PVC Dot Gloves

B6821 PVC Dot - Sml
B6822 PVC Dot - Med
B6823 PVC Dot - Lrg



Botron's powder free vinyl gloves are ambidextrous and come with a beaded cuff. This glove is an ideal solution for industrial applications powder free vinyl glove. Available in 2 sizes. 9" & 12" (packs of 100)

Powder Free Vinyl Gloves

B20007-9 Powder Free - 9"
B20007-12 Powder Free - 12"



Botron's lint free inspection gloves are to protect non ESD sensitive components from contamination. Helps prevent the transfer of finger prints, oils, and salts when handling materials in the work environment.

Inspection Gloves

B6831 Lint Free nylon inspection/liners
B6832 Half finger nylon liners
B6836 100 % cotton inspection/liners



Botron's latex gloves are designed for clean room applications and are rated for class 100. Available in 2 sizes. 9" & 12" (100 per box/10 boxes per case)

Latex Class 100

B20001-9 Class 100 Latex - 9"
B20001-12 Class 100 Latex - 12"

PROTECTIVE FINGER COTS



Botron offers 3 different kinds of finger cots; anti static, dissipative and clean room safe. They are all designed to protect electronic components from skin salts, flakes, oils and other particulates that may cause contamination.

**REDUCES RISK
OF CONTAMINATION**

Finger Cots

B6841 Black Dissipative - Sml/5 gross
B6842 Black Dissipative - Med/5 gross
B6843 Black Dissipative - Lrg/5 gross
B6844 Black Dissipative- XL/5 gross

B6845 Pink Anti Static - Sml/10 gross
B6846 Pink Anti Static - Med/10 gross
B6847 Pink Anti Static - Lrg/10 gross
B6848 Pink Anti Static - XL/10 gross

B20017S White Nitrile - Sml/5 gross
B20017M White Nitrile - Med/5 gross
B20017L White Nitrile - Lrg/5 gross
B20017XL White Nitrile - XL/5 gross



STATIC SOLUTIONS WITH SAVINGS

ESD SMOCKS

LIGHTWEIGHT



B7352 Blue pullover



B7332 White lightweight jacket w/ snap cuffs



B7302 Blue lightweight jacket w/ snap cuffs



B7302C Blue lightweight jacket w/ conductive cuffs



SEE PAGES 7-8
FOR GROUNDING



Special Order Colors

It should be noted that most cotton, polyester and linen clothing can act as insulators and although personal can be grounded by a wrist strap and/or footwear system it does not mean that their clothing will dissipate static charges through the skin. Botron recommends wearing a properly grounded ESD smock when handling static sensitive materials to reduce the chance of transferring static charge and damaging components.

		BLUE	WHITE	BLUE	BLUE
		w/snap cuffs	w/snap cuffs	w/cond cuffs	pullover
Chest	Length				
34"-36"	34"-36"	B7302	B7332	B7302C	B7352
38"-40"	34"-36"	B7303	B7333	B7303C	B7353
42"-44"	34"-36"	B7304	B7334	B7304C	B7354
46"-48"	34"-36"	B7305	B7335	B7305C	B7355
50"-52"	34"-36"	B7306	B7336	B7306C	B7356
54"-56"	34"-36"	B7307*	B7337*	B7307C*	B7357*
58"-60"	34"-36"	B7308*	B7338*	B7308C*	B7358*

*denotes custom ordered items

CARD HOLDERS

ESD SAFE

ESD Safe Card Holders

Features: We offer ESD safe card holders in clear and blue. with a clip or without. 200/PK.

- BH120 Clear ID vertical w/out clip 2.5"x4"
- BH120C Clear ID vertical w/clip 2.5"x4"
- BH121 Clear ID horizontal w/clip 4"x2.25"
- BH121N Clear ID horizontal w/out clip 4"x2.25
- BH124 Clip

- BH130 Blue ID vertical w/clip 2.5"x4"
- BH131 Blue ID vertical w/out clip 2.5"x4"
- BH132 Blue ID horizontal w/out clip 4"x2.25"
- BH133C Blue ID horizontal w/clip 4"x 2.25"



ESD SAFE TAPES

CELLULOSE

STATIC SOLUTIONS WITH SAVINGS



Colored Striped Tapes

B1613BS Blue 1" x 3" 72YDS
B1633BS Blue 3/4" x 3" 72YDS
B1653BS Blue 1/2" x 3" 72YDS
B1613RS Red 1" x 3" 72YDS
B1633RS Red 3/4" x 3" 72YDS
B1653RS Red 1/2" x 3" 72YDS
B1613YS Yellow 1" x 3" 72YDS
B1633YS Yellow 3/4" x 3" 72YDS
B1653YS Yellow 1/2" x 3" 72YDS
B1613GS Green 1" x 3" 72YDS
B1633GS Green 3/4" x 3" 72YDS
B1653GS Green 1/2" x 3" 72YDS



Colored Printed Tapes

B1613BPS Blue 1" x 3" 72YDS
B1633BPS Blue 3/4" x 3" 72YDS
B1653BPS Blue 1/2" x 3" 72YDS
B1613RPS Red 1" x 3" 72YDS
B1633RPS Red 3/4" x 3" 72YDS
B1653RPS Red 1/2" x 3" 72YDS
B1613YPS Yellow 1" x 3" 72YDS
B1633YPS Yellow 3/4" x 3" 72YDS
B1653YPS Yellow 1/2" x 3" 72YDS
B1613GPS Green 1" x 3" 72YDS
B1633GPS Green 3/4" x 3" 72YDS
B1653GPS Green 1/2" x 3" 72YDS



Clear Tapes

B1651 1/2" x 1" 36YDS
B1653 1/2" x 3" 72YDS
B1631 3/4" x 1" 36YDS
B1633 3/4" x 3" 72YDS
B1611 1" x 1" 36YDS
B1613 1" x 3" 72YDS
B1623 2" x 3" 72YDS



Printed Tapes

B1653P 1/2" x 3" 72YDS
B1633P 3/4" x 3" 72YDS
B1613P 1" x 3" 72YDS
B1623P 2" x 3" 72YDS
B1651P 1/2" x 1" 36YDS
B1631P 3/4" x 1" 36YDS

ESD safe cellulose tape is 2.4 mil thick with a charge decay of <.014 seconds. Botron's anti-static tape is perfect for sealing ESD bags. It can also be used for a wide range of workstation applications such as binding, edging and securing.

TAPES

PROTECTIVE



Polyimide Hi-Temp Tapes

BK1643 1/4" x 3" 36YDS
BK1653 1/2" x 3" 36YDS
BK1633 3/4" x 3" 36YDS
BK1613 1" x 3" 36YDS
BK1653D DUB/SIDE 1/2" x 3" A/S 36YDS



Low Static Hi-Temp Tapes

BKA1608 1/8" x 3" A/S 36YDS
BKA1638 3/8" x 3" A/S 36YDS
BKA1643 1/4" x 3" A/S 36YDS
BKA1653 1/2" x 3" A/S 36YDS
BKA1678 7/8" x 3" A/S 36YDS
BKA1633 3/4" x 3" A/S 36YDS
BKA1613 1" x 3" A/S 36YDS
BKA1623 2" x 3" A/S 36YDS



Conductive Grid Tapes

B1605 1/2" x 3" 118'
B1635 3/4" x 3" 118'
B1615 1" x 3" 118'
B1620 2" x 3" 118'



Hi-Temp Masking Tapes

BHT53 1/2" x 3" 60YDS
BHT34 3/4" x 3" 60YDS
BHT13 1" x 3" 60YDS
BHT23 2" x 3" 60YDS
BHT33 3" x 3" 60YDS

TAPES

AISLE MARKING



Aisle Marking Tapes

B1618M 3" x 54' Aisle Tape
B1636M 3" x 108' Aisle Tape



Lead Free Aisle Marking Tapes

B1618L 3" x 54' Two Color Aisle Tape

Hi-Temp polyimide tape will withstand temperatures up to 500F / 260C. Designed to minimize the effects of static generation during stripping and peeling. It is also highly resistant to heat and chemicals, puncture and tear resistant at high temperatures and offers optimal performance in electrical and thermal insulation.

Botron's anti-static grid tape most common usages are for electromagnetic interference (EMI) shielding and covering pins, connectors and plugs on electronic equipment during storage or transportation.

Hi-temp masking tape withstands 275°F for 45 minutes. Designed for wave solder applications. It's rubber adhesive leaves virtually no residue and is stain free.

Botron's high visibility aisle marking tapes are perfect for marking off ESD safe areas and lead free zones.



STATIC SOLUTIONS WITH SAVINGS

ESD Safe Tape Dispensers

- B1601** Holds one roll 1" wide
- B1602** Holds two rolls 1" wide
- B1603** Holds three rolls 1" wide

ESD safe manual tape dispensers for 3" core tapes offer a slip resistant ESD rubber base. Available in 3 sizes: 1", 2" and 3" wide. Each holding 3" diameter rolls.

- Blade Guard
- Dissipative Body
- ESD Safe
- 3 Sizes Available

TAPE DISPENSERS ESD SAFE



Electronic Tape Dispensers

B1000 Automatic Tape Dispenser

Three digit LED and soft touch keypad for easy programming. Digital auto advance and cut electric eye sensor as well as full manual controls. Program up to three different tape sizes in manual or auto mode. Available cutting lengths of .20" up to 39". Unit can handle multiple styles of tape and widths ranging from .28" to 2" by 3" cores.

- LED Display
- Steel Blades
- Manual Override
- Photocell Control
- Replacement Blades



Automatic Tape Dispensers

B5000 Automated Tape Dispenser

Three digit LED and soft touch keypad for easy programming. Digital auto advance and cut electric eye sensor as well as full manual controls. Can cut two rolls at the same time and program up to three sizes. With its unique roll area you can cut oversized rolls up to 11" diameter and any size core.

- LED Display
- Steel Blades
- Manual Override
- Auto Pressure Adjustable
- Photocell Control



Automatic Tape Dispensers

B2000 Automatic Carousel Tape Dispenser

Auto-feeds and cuts tape at the touch of a button, placing cut pieces on its carousel for easy removal. Accepts a variety of tapes from .12" to .99" wide. Carousel holds up to 10 pieces with consistent lengths ranging from .51" to 2.37".

- LED Display
- Steel Blades
- Top Touch Start Button
- Photocell Control

AUTOMATIC DISPENSERS CAROUSEL



SOLVENT DISPENSERS

TAP-IT



Features: The TAP-IT antistatic solvent dispensers with stainless steel cap come in three sizes. Just "TAP-IT" to release the solvent. Closeable caps reduce fumes and evaporation.

Blue TAP-IT Solvent Dispensers

B19004B 4oz antistatic dispenser
B19006B 6oz antistatic dispenser
B19008B 8oz antistatic dispenser
B19010 Replacement cap

Pink TAP-IT Solvent Dispensers

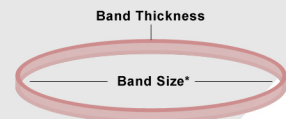
B19004P 4oz antistatic dispenser
B19006P 6oz antistatic dispenser
B19008P 8oz antistatic dispenser

ESD SAFE

RUBBER BANDS



Features: Conductive Rubber Bands and Anti Static Rubber Bands are used to protect, but are not limited to, static sensitive components, and bundling IC tubes and Trays. *Band size measured by diameter as shown.

**Dissipative Rubber Bands**

BE3016 3" x 1/16" black (apx. 1550 pcs.)
BE4518 4.5" x 1/8" black (apx. 420 pcs.)
BE5114 5" x 1/4" black (apx. 210 pcs.)
BE7518 7.5" x 1/8" black (apx. 315 pcs.)

Antistatic Rubber Bands

BE2018 2" x 1/8" pink (apx. 1650 pcs.)
BE3512 3.5" x 1/8" pink (apx. 600 pcs.)
BE5014 5" x 1/4" pink (apx. 210 pcs.)
BE8014 8" x 1/4" pink (apx. 120 pcs.)

FUME

EXTRACTOR



Features: Designed to remove and filter soldering smoke at the workstation, Botron's Fume Extractor provides a clean air environment for personnel on the assembly line. The carbon filter system effectively absorbs noxious gasses from lead and flux.

Fume Extractor

B1930 Fume Extractor
B1931 Filter Pack - 5ct.

**IC Tube Straps**

BSTP20 1" x 20" hook & loop
BSTP24 1" x 24" hook & loop
BSTPC23 1" x 23" conductive hook & loop
BSTPC30 1" x 30" conductive hook & loop

ESD SAFE

CART COVERS



Features: All Botron cart covers are made to protect ESD sensitive components when being transported or stored from static charges and contaminants such as dust and dirt. The B171836G and B171848G both feature a dual layer design, constructed of a solid green static dissipative vinyl 10^8 (outer layer) and a black conductive vinyl $<10^6$ (inner layer). Both the B171836B (blue) and B171836C (clear) are transparent static dissipative vinyl with a surface resistivity of $10^{10} - 10^{11}$.

ESD Safe Cart Covers

B171836G Green 18" x 36" x 63"
B171848G Green 18" x 48" x 63"
B171836B Blue 18" x 36" x 63"
B171836C Clear 18" x 36" x 63"

**ESD Safe Tote Snap-On**

B1753T 5.75" x 3.5" top load
B1753S 8" x 3.5" side load
B1754T 5.75" x 3.5" top load



STATIC SOLUTIONS WITH SAVINGS

Static Dissipative Binders

- B7405** 1/2" Three Ring
- B7401** 1" Three Ring
- B7415** 1.5" Three Ring
- B7402** 2" Three Ring
- B7403** 3" Three Ring

Botron's static dissipative vinyl binders with printed ESD symbol on front cover are available in 1/2", 1", 1.5", 2" and 3" spine widths.

- Blue vinyl with dissipative overlay
- Heat sealed edges
- Nickel plated steel rings

CUSTOM COLORS AVAILABLE

ESD Safe Clipboard

- B7602** 9" x 12" Blue static dissipative vinyl clipboard

Botron's ESD Safe clipboard is made of blue vinyl with a printed ESD symbol, measuring 9" x 12" with a 5" wide metal clip.

- Static Decay <1.0 sec
- Surface Resistivity 10^{11}
- Size fits standard 8.5" x 11" stock
- Humidity independent

Sheet Protectors

- B7406** 8.5" x 11" Sheet Protectors 3mil, 100pk
- B7411** 8.5" x 11" Sheet Protectors 6mil, 25pk
- B7412** 8.5" x 11" Shop Travelers 6mil, 25pk
- B7417** 11" x 17" Drawing Holder 6mil, 25pk

Botron's antistatic sheet protectors are designed for use in ESD controlled areas and can be cleaned to conform to Class 100 clean room standards. The B7406 and B7411 come 3 hole punched for storage in ESD safe binders. Available in 8.5" x 11" and 11" x 17" sizes.

- Humidity independent
- N-Octanoic acid free
- Does not promote corrosion
- No measurable outgassing

ESD Safe Paper

- B8511** 8.5" x 11" 500/ream

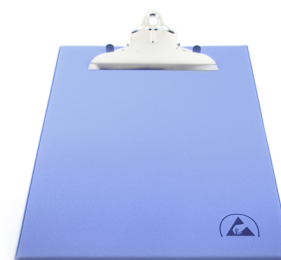
Botron's ESD safe paper is uniquely formulated to reduce particulation and smudging. Ideal for controlled environments such as clean rooms and other static free zones. Lays flat and works great in mechanical printing machines.

- High tear and tensile strength
- Ultra low particulation
- 500 page ream
- Burst strength 50lbs per inch

STATIC DISSIPATIVE BINDERS



STATIC DISSIPATIVE CLIPBOARDS



ESD SAFE SHEET PROTECTORS



STATIC DISSIPATIVE PRINTER PAPER



CUSTOM ESD FABRIC CHAIRS



ESD Safe Chair
B070062 Standard Tall Chair w/Nylon Base



ESD Safe Chair
B070061 Standard Chair w/Nylon Base



ESD Safe Stool
B070067 Tall Stool w/Nylon Base

Many colors to choose from.



Botron offers a complete line of full customizable ESD safe chairs and stools. Mix, match, combine and build the chair that is right for you and the workstation. Choose from any of the options seen on this page. Simply start with either our 21" - 31" B070062 Adjustable Tall Chair, our 17" - 21" B070061 Adjustable Standard Chair or ESD Safe Stool.

- 5 year warranty
- Meets ANSI/ESD S20.20
- Tear Strength ASTM-D-2262
- 300lb - 450lb capacity



BUILD & CUSTOMIZE

a. Single Lever



b. Three Lever



c. Nylon Base



d. Aluminum Base



e. No Foot Ring



f. Standard Foot Ring



g. Heavy Duty Foot Ring



h. No Arm Rest



i. Fixed Arm Rest



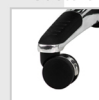
j. Adjustable Arm Rest



k. Immobile Glides



l. Standard Casters



m. ESD Casters



POLYURETHANE ESD CHAIRS



- Molded polyurethane
- Adjustable height
- Optional foot ring
- Available in black
- ESD Safe

Features: Botron's B070071 molded polyurethane Ergonomic Chair with five star metal base comes with a standard 4" adjustment. Also available is our taller B070072 Ergonomic Chair with foot ring and 8" adjustment.

Ergonomic Chair

B070071 Chair - Black - 4" Adjustment

B070072 Chair - Black w/Foot ring - 8" Adjustment

**NON-ESD CHAIRS
AVAILABLE ONLINE**



STATIC SOLUTIONS WITH SAVINGS

FOOTWEAR/ Disposable Heel Grounders.5/ Disposable Shoe Covers.5/ Full Coverage Sole Grounders.5/ Heel Grounders.3,4/ Toe Grounders.5/ **COIL CORDS/** Coil Cords.6/ G.E.M. Coil Cords.6/ **WRIST STRAPS/** Disposable.8/ Dual Wire.8/ G.E.M. Wrist Straps.7/ Metal Band.8/ Standard.7/ **TABLE MATS/** Cleaner.31/ Rubber Mats.9,10/ Vinyl Mats.9,10/ Workstation Kits.14/ **FLOOR MATS/** Anti-Fatigue Mats.11,12,13/ Floor Mats.13/ Cleaner.31/ **FIELD KITS/** Pocket Field Kits.14/ Pouch Field Kits.14/ Standard Field Kits.14/ **HARDWARE/** Snap Tools.15/ Grounding Adapters.15/ Work Surface Snap Kits.15/ **GROUNDING/** Floor Mat.16/ Table Mat.16/ Work Bench.16/ **CONTINUOUS MONITORS/** ELITE.17/ Dual Operator.17/ Dual Wire.17/ Single Operator.17/ **TEST EQUIPMENT/** Calibration Units.22/ ELITE Test Systems.19,20,21,22/ Footwear Testers.22/ Resistivity Audit Kits.18/ Resistivity Meters.18/ Test Stations.21/ Wrist Strap Testers.22/ **IONIZATION/** Benchtop Ionizers.23/ Compressed Air Ionizers.24/ Ionization Bars.24/ Overhead Ionizers.23/ **IONIZATION AUDIT EQUIPMENT/** Charge Plate Monitor.25/ Electrostatic Field Meters.25/ ELITE Electrostatic Field Meter.25/ **VACUUM SEALERS/** Chamber Sealer.26/ Impulse Sealer.26/ **BAGS/** Conductive Bags.26/ ESD Shielding Bags.27/ Moisture Barrier Bags.27/ Pink Antistatic Bags.27/ **LABELS AND SIGNS/** Awareness Labels.28/ ESD Awareness Labels.28/ ESD Awareness Signs.28/ Label Dispenser.28/ Lead Free Labels.28/ Lead Free Signs.28/ **PRODUCTION TOOLS/** Conductive Brushes.29/ Cutters.29/ Strippers.29/ Tweezers.29/ **MATERIAL HANDLING/** Board Holders.30/ Trays.30/ **FOAM/** Conductive.30/ Cross-Link.30/ **FLOOR CARE/** Floor Care.31/ Floor Finish.31/ Floor Paint.31/ **CLEAN ROOM/** Tacky Mats.32/ Bouffant Caps.32/ Face Masks.32/ Printer Paper.32/ ESD Wipes.32/ **GLOVES/** Conductive.33/ Dissipative.33/ Finger Cots.33/ Latex.33/ Nitrile.33/ **GARMENTS/** Smocks.34/ Card Holders.34/ **TAPE/** Aisle Marking Tape.35/ Antistatic Tape.35/ Grid Tape.35/ Hi-Temp Tape.35/ Polyimide Tape.35/ **TAPE DISPENSERS/** Electronic.36/ Manual.36/ **ACCESSORIES/** Badge Holders.34/ Binders.38/ Cart Covers.37/ Clipboards.38/ ESD Paper.38/ Hand Lotion.31/ IC Straps.37/ Rubber Bands.37/ Fume Extractor.39/ Sheet Protectors.38/ Solvent Dispensers.37/ **ESD SAFE CHAIRS/** Chairs.39





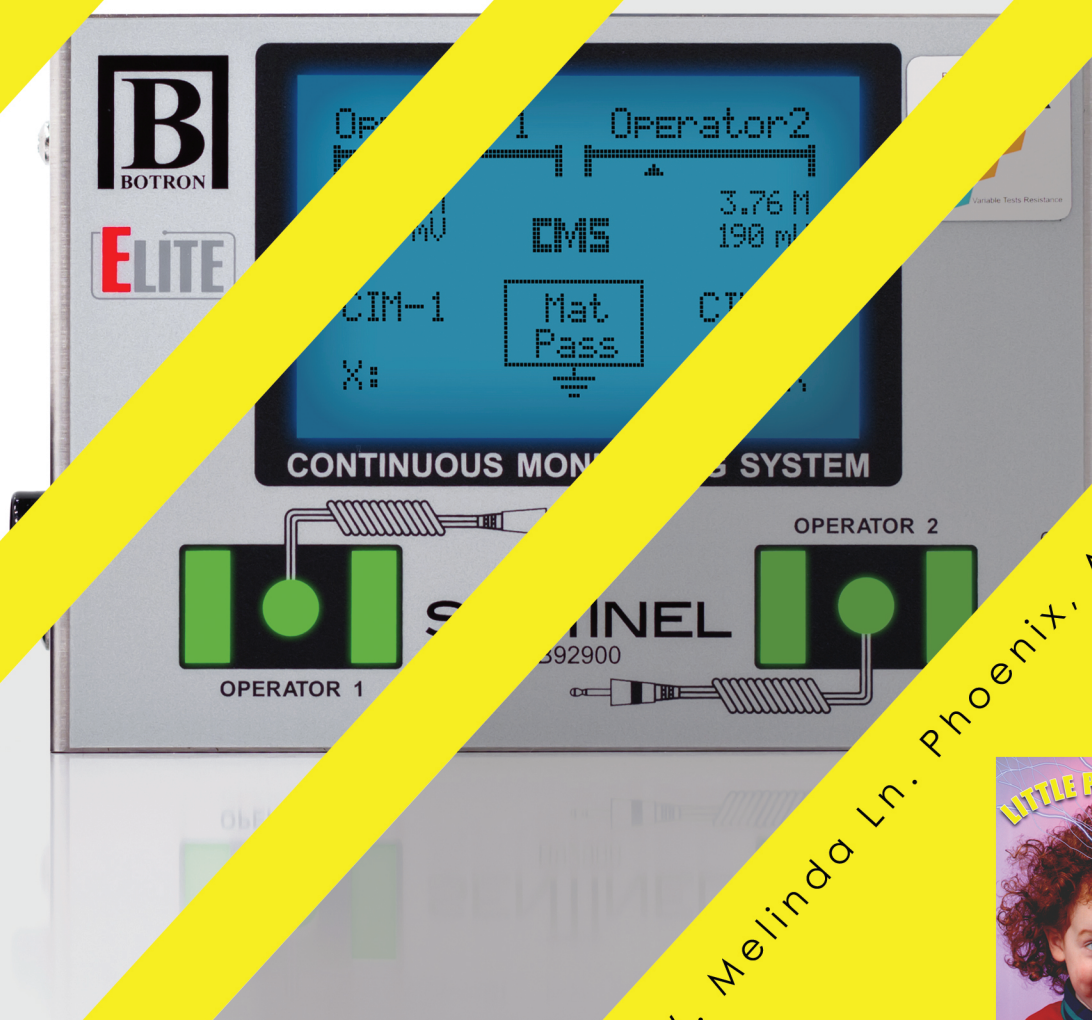
STATIC SOLUTIONS WITH SAVINGS

2013



CATALOG

BOTRONESD



325 W. Melinda Ln. Phoenix, AZ 85027



CALL FOR
FREE POSTER!