



CONTAMINATION CONTROL
PRODUCT
CATALOG

CLEANROOMS | ASEPTIC PROCESSING | CONTROLLED ENVIRONMENTS



AEROSPACE & DEFENSE



MICROELECTRONICS



AUTOMOTIVE



PHARMACEUTICAL



OPTICS



HEALTHCARE



PRINT



MEDICAL DEVICE



UNIVERSITY / RESEARCH



FOOD & BEVERAGE

Berkshire
ENGINEERED CLEAN

BERKSHIRE.COM

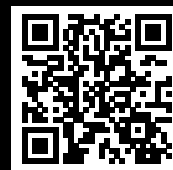
TABLE OF CONTENTS

Berkshire Introduction	4
Cleanroom Fundamentals	5
Wiper Substrate and Technology Guide	6 - 7
Dry Wipers Selection Guide	
Knitted Wipers	8 - 11
Nonwoven Wipers	12 - 13
Specialty Wipers	14
SatPax® Pre-Wetted Wipers Guide	15 - 17
Choice® Products	18 - 20
Pro-Wipe® Industrial Wipers	21
BCR® Documentation Systems	22 - 23
BCR® Glove Liners	24
BCR® Face Masks	25
Lab-Tips® Swabs	26 - 30
Mop Systems & Accessories	31 - 37

DID YOU KNOW?

This catalog contains ten blocks of bonus information throughout.

Explore more tech tips and resources here:



The Americas

Phone: 1.800.242.7000
Fax: 1.336.446.0156
E-Mail: info@berkshire.com
Website: www.berkshire.com

Europe

Phone: 44.(0).870.757.2877
Fax: 44.(0).870.757.2878
E-Mail: enquiries@berkshire.uk.com
Website: www.berkshire.eu.com

North Asia

Phone: 81.3.5827.2380
Fax: 81.3.5827.2382
E-Mail: master@berkshire.co.jp
Website: www.berkshire.co.jp

Southeast Asia

Phone: 65.6252.4313
Fax: 65.6252.4312
E-mail: enquiries@berkshire.com.sg
Website: www.berkshire.com.cn

DRIVING THE TECHNOLOGY OF CONTAMINATION CONTROL

BECAUSE THE SMALLEST MEASURE CAN MAKE THE BIGGEST DIFFERENCE

For 50 years, Berkshire has been a global leader in the engineering and manufacturing of surface control products for cleanrooms and controlled environments. With manufacturing operations in the USA, UK and China, and sales operations on four continents, Berkshire has the capabilities to meet your smallest and largest demands, no matter where you are located.



WHY BERKSHIRE? Engineered Clean

1

Quality Programs:
ISO9001 Certified
SPC
CAPA system
FMEAs
IQ, OQ, PQ

Results:

Superior level of quality, consistency, traceability - the world's cleanest and trusted contamination control products

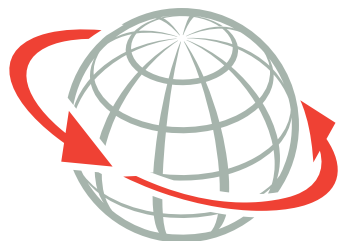
2

How do you determine if your cleanroom supplies are right for your processes?

Berkshire conducts facility audits that will result in an objective set of observations and recommendations resulting in improved processes and lower TCOO.

3

Global Support



Documentation

Certificates of Sterility
Certificates of Irradiation
Certificates of Conformance
Certificates of Analysis
Safety Data Sheets
Product Information Sheets
Instructional Posters

People - Training

Customer Service Representatives
Contamination Control Specialists
Videos
Onsite Support

4

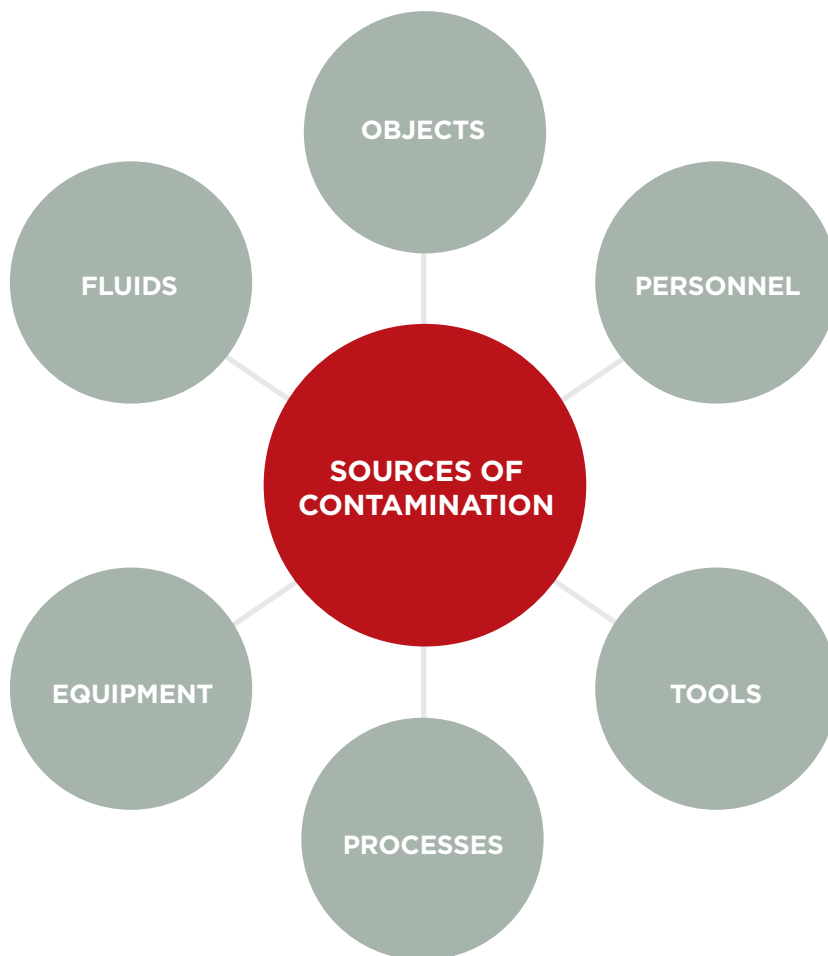
Innovation

Advanced Wiper Technology: CapSure® - IONX®



CLEANROOM CONTAMINATION FUNDAMENTALS

WHAT YOU CAN'T SEE CAN HURT YOU



WHAT CAN YOU DO?

Follow a validated cleaning protocol with written SOPs

Choose and use qualified wipers and other
cleanroom cleaning supplies

INVISIBLE & VISIBLE CONTAMINATION

SKIN PARTICLES

FIBERS

DUST

GREASE

BACTERIA

VIRUSES

METALS

FUNGI

NVRS

IONS

FILMS

REMEMBER

Inappropriate cleanroom
supplies can be a source of
contamination, not a
solution for controlling
contamination

WIPER TEST METHODS

CLEANLINESS

Fibers

A wiper is “washed” in water using a biaxial shaker for five minutes. The fibers released into the water are filtered onto a membrane and counted microscopically. The results are expressed as fibers $\geq 100\mu\text{m}$ per square centimeter of wiper. (IEST-RP. CC004.3, Section 6.2.2.2)

Particle Generation - Biaxial Shake Test

A wiper is “washed” in water using a biaxial shaker for five minutes. A liquid-borne particle counter then counts the particles released into the water. By dividing the total number of particles released by the area of the wiper, the results are expressed as particles $\geq 0.5\mu\text{m}$ per square centimeter of wiper. (IEST-RP.CC004.3, Section 6.1.3)

Airborne Particle/ Helmke Drum Test

Under controlled conditions, ten wipers are tumbled in a rotating drum to release particles from the wiper fabric. An airborne particle counter counts released particles and results are expressed as the number of particles per wiper cubic foot of air sampled. [IEST-RP-CC003.4 Section B2.5]

SORBENCY

Sorbency

A sample piece of material is saturated with as much fluid as it can hold. After one minute, the material is weighed, and results are expressed in millimeters of fluid per square meter. (IEST-RP. CC004.3, Section 8.1 - modified)

Efficiency

This calculation indicates how well a material absorbs, relative to others. Results, expressed in millimeters of liquid per gram of material, assist in comparing one raw material with another.

Rate

This test is a measurement of the time it takes a wiper to absorb a liquid. Results are expressed in seconds. (IEST-RP. CC004.3. Section 8.1 - modified)

PURITY

Non-Volatile Residue

Berkshire generates non-volatile data using both deionized water and 2-Propanol. Results are expressed in grams of extractables per square meter of wiper, which is a useful guide to relative purity of wipers. (IEST-RP. CC004.3, Section 7.1.2)

Metallic Ions

Ions are extracted in deionized water and quantitatively analyzed by Ion Chromatography. Results are stated in parts per million (ppm). (IEST-RP. CC004.3, Section 7.2.2.)

Attribute		Units	Value	Test Method
Basis Weight		g/m ²	134	TAPPI T-410
Caliper		μm	506	TAPPI T-411
Fibers	$\geq 100\mu\text{m}$	fibers/cm ²	0.017	IEST-RP.CC004.3, Sec 6.1.3 / Sec 6.2.2
Particles	$\geq 0.5\mu\text{m}$	x10 ³ /cm ²	0.57	IEST-RP.CC004.3, Sec 6.1.4 / Sec 6.2.1
Sorbency	Capacity	mL/m ²	371	IEST-RP.CC004.3, Sec 8.1 modified /Sec 8.2 modified
	Efficiency	mL/g	2.8	
	Rate	seconds	1	
Non-Volatile Residue	DI Water	g/m ²	0.0032	IEST-RP.CC004.3, Sec 7.1.2
	IPA	g/m ²	0.011	
Ions	Na+	ppm	0.0059	IEST-RP.CC004.3, Sec 7.2.2
	K+	ppm	0.00089	
	Ca++	ppm	0.0070	
	Mg++	ppm	0.00013	
	Cl-	ppm	0.011	

SKU specific test results can be found on Product Information Sheets located at [Berkshire.com/shop.html](https://berkshire.com/shop.html)

CHOOSE YOUR WIPER SUBSTRATE

NON-STANDARD OPTIONS AVAILABLE
new substrate, special size, packaging
configuration, and saturation level



NONWOVENS

ADVANTAGES

- Natural and synthetic
- Good strength
- More absorbent than knitted
- Very consistent
- Works well with bleaches, phenols, quaternary ammonium compounds
- Less expensive than knitted

CONSIDERATIONS

- Higher levels of fiber and particle contamination
- Poor in abrasive conditions
- Cannot be laundered

BERKSHIRE OPTIONS

- | | | |
|-----------------------------|---------------------------|-------------------------|
| 55% cellulose/45% polyester | 58% polyester/42% lyocell | 100% polyurethane foam |
| 100% cotton | 100% polypropylene | 50% rayon/50% polyester |
| 100% polyester | 60% polypropylene/ | 63% abaca/37% softwood |
| 45% cellulose/55% polyester | 40% cellulose | 100% manila hemp |
| | | 70% rayon/30% cellulose |



KNITTED/ LAUNDERED/ SEALED EDGE

ADVANTAGES

- Tubular/sealed edge means low particle and fibers
- Typically nonabrasive
- Extremely pure
- Durability better than nonwovens
- Absorbent
- Works well with bleaches, phenols, quaternary ammonium compounds
- Low NVRs and ionic levels

CONSIDERATIONS

- Laundered sealed edge wipers are more expensive.
- Not as absorbent as nonwovens

DID YOU KNOW?
Nylon microfiber has an incredibly soft hand

BERKSHIRE OPTIONS

- | | |
|------------------------------------|------------------------------------|
| 100% continuous filament polyester | 70% polyester/30% nylon microfiber |
|------------------------------------|------------------------------------|



KNITTED/ LAUNDERED/ UNSEALED EDGE

ADVANTAGES

- Particle, fiber levels of laundered knits are lower than nonwovens
- Typically nonabrasive
- Extremely pure
- Durability better than nonwovens
- Absorbent
- Works well with bleaches, phenols, quaternary ammonium compounds
- Low NVRs and ionic levels

CONSIDERATIONS

- Laundered wipers are more expensive
- Higher in fibers than sealed edge version
- Not as absorbent as nonwovens

BERKSHIRE OPTIONS

- | |
|------------------------------------|
| 100% continuous filament polyester |
|------------------------------------|

DRY WIPER SELECTION GUIDE

1 EXCELLENT 3 FAIR
2 GOOD 4 NR

KNITTED WIPERS - LOT TO LOT TRACEABILITY - AUTOCLAVABLE

ISO CLASS 3-5 | CLEANROOM CLASS 1-100 | EU GRADE B/C/D

PRODUCT/SUBSTRATE	STERILE OPTION	ABSORBENCY	ABRASION RESISTANCE	SENSITIVE SURFACES	LOW-LINTING	SOLVENT COMPATIBLE
CAPSURE®-LP Edge 100% continuous filament polyester		1	1	1	1	1
CAPSURE®-LP 100% continuous filament polyester		1	1	1	1	1
CAPSURE®-VP 100% continuous filament polyester		1	1	1	1	1
MICROSEAL® 1200 100% continuous filament polyester	•	2	1	1	1	1
MICROSEAL SUPERSORB® 100% continuous filament polyester		1	1	1	1	1
MICROSEAL® VP 100% continuous filament polyester	•	2	1	1	1	1
ULTRA-SEAL® 3000 100% continuous filament polyester	•	1	1	1	1	1
VALUSEAL® 1500 100% continuous filament polyester		2	1	1	1	1
VALUSEAL-HA® 100% continuous filament polyester		2	1	1	1	1
VALUSEAL-IONX® 100% continuous filament polyester		2	1	1	1	1
VALUSEAL®-LP 100% continuous filament polyester		2	1	1	1	1

ISO CLASS 4-5 | CLEANROOM CLASS 10-100 | EU GRADE B/C/D

PRODUCT/SUBSTRATE	STERILE OPTION	ABSORBENCY	ABRASION RESISTANCE	SENSITIVE SURFACES	LOW-LINTING	SOLVENT COMPATIBLE
MICROPOLX® 2750 70% polyester/30% nylon microfiber		1	1	1	1	1
SUPER POLX® 1200 100% continuous filament polyester	•	2	1	1	1	1
SUPER POLX® 1500 100% continuous filament polyester		2	1	1	1	1

ISO CLASS 5-8 | CLEANROOM CLASS 100-100,000 | EU GRADE B/C/D

PRODUCT/SUBSTRATE	STERILE OPTION	ABSORBENCY	ABRASION RESISTANCE	SENSITIVE SURFACES	LOW-LINTING	SOLVENT COMPATIBLE
POLX® 1200 100% continuous filament polyester		2	1	1	2	1



A breakthrough patented wiper technology from Berkshire, CapSure® features an innovative surface treatment process that enables wipers to **capture and retain** more contaminant particles, providing a more effective wipe and reducing the risk of recontamination.

CAPSURE® - LP EDGE

4-sided sealed border

- Increased durability
- Minimizes fiber & particle release during use

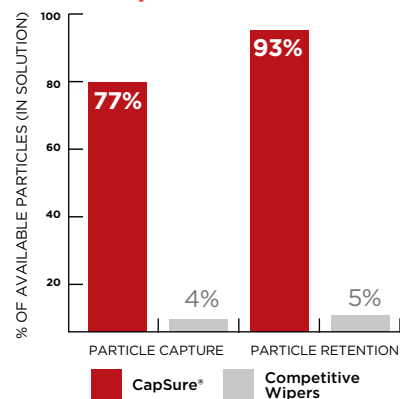
Patented surface treatment

- Captures and retains particle contamination

Made from the ValuSeal® - LP substrate

- Critically low particles, fibers, ions and extractables
- Combination of weight and caliper provide an excellent hand for cleaning rough surfaces

CapSure® Performance Comparison



MICROPOLX® 2750

8 times the number of filaments and 4 times the surface area of standard wipers

- Increased surface area results in more efficient cleaning performance, minimizing the need for potentially harmful solvents
- Wedge-shaped fiber cross sections lift, entrap and remove particles from critical areas
- Removes oily soils with little or no solvent required

Soft hand and non-abrasive ultrasonic sealed edges

- Excellent for sensitive or scratch prone surfaces



VALUSEAL® IONX®

IonX® - An advanced proprietary ISO Class 4 cleanroom laundry process.

- Ultra-low levels of ionic extractables and leachables

Laser sealed edges

- Minimizes fiber & particle release during use

Lightweight substrate design

- Reduces actual cost in use compared to heavier weight wipers

ISO CLASS 3-5

CLEANROOM CLASS 1-100 | EU GRADE B/C/D

CapSure®-LP Edge

100% continuous filament polyester knit

CapSure®-LP Edge wiper features four sealed-edge sides and is specially engineered for superior surface cleaning.

SKU	SIZE	SHEETS/PACK	PACKS/CASE
CPLPE.0909.8	9x9" (23x23cm)	150	8
CPLPE.0909B.8	9x9" (23x23cm)	150 (BULK)	8

Sealed Border Edge, Cleanroom Laundered

CapSure®-LP

100% continuous filament polyester knit

ValuSeal®-LP wiper with the breakthrough CapSure® patented surface treatment technology

SKU	SIZE	SHEETS/PACK	PACKS/CASE
CPSLP.0708B.8	7x8" (18x20cm)	300 (BULK)	8
CPSLP.0909.8	9x9" (23x23cm)	150	8
CPSLP.0909B.8	9x9" (23x23cm)	150 (BULK)	8
CPSLP.1212.14	12x12" (30x30cm)	75	14
CPSLP.1212B.14	12x12" (30x30cm)	75 (BULK)	14

Sealed Edge, Cleanroom Laundered

CapSure®-VP

100% continuous filament polyester knit

Lightweight tightly knitted MicroSeal®-VP with the breakthrough CapSure® surface treatment technology

SKU	SIZE	SHEETS/PACK	PACKS/CASE
CPSVP.0708B.8	7x8" (18x20cm)	300 (BULK)	8
CPSVP.0909.8	9x9" (23x23cm)	150	8
CPSVP.0909B.8	9x9" (23x23cm)	150 (BULK)	8
CPSVP.1212.14	12x12" (30x30cm)	75	14
CPSVP.1212B.14	12x12" (30x30cm)	75 (BULK)	14

Sealed Edge, Cleanroom Laundered

MicroSeal® 1200

100% continuous filament polyester knit

MicroSeal® 1200 is a highly absorbent versatile general purpose wiper with an excellent hand for cleaning rough surfaces

SKU	SIZE	SHEETS/PACK	PACKS/CASE
MS1200.0404B.10	4x4" (10x10cm)	600 (BULK)	10
MS1200.0909.8	9x9" (23x23cm)	100	8
MS1200.0909B.8	9x9" (23x23cm)	100 (BULK)	8
MS1200.1212.6	12x12" (30x30cm)	100	6

Sealed Edge, Cleanroom Laundered

MicroSeal SuperSorb®

100% continuous filament polyester knit

MicroSeal SuperSorb® 2-ply construction diamond pattern make this the most absorbent polyester wiper available

SKU	SIZE	SHEETS/PACK	PACKS/CASE
MSSS.0909.8	9x9" (23x23cm)	100	8
MSSS.1212.12	12x12" (30x30cm)	50	12

Sealed Edge, Cleanroom Laundered

MicroSeal SuperSorb® LITE

100% continuous filament polyester knit

MicroSeal SuperSorb® LITE is a lightweight version of the highly absorbent MicroSeal SuperSorb®

SKU	SIZE	SHEETS/PACK	PACKS/CASE
SSLT.0909.14	9x9" (23x23cm)	100	14
SSLT.0909B.14	9x9" (23x23cm)	100 (BULK)	14
SSLT.1212.16	12x12" (30x30cm)	50	16
SSLT.1212B.16	12x12" (30x30cm)	50 (BULK)	16

Sealed Edge, Cleanroom Laundered

MicroSeal®-VP

100% continuous filament polyester knit

MicroSeal®-VP is a lightweight wiper with a tightly knit material design that reduces the actual cost in use compared to heavier weight products and minimizes abrasion of components.

SKU	SIZE	SHEETS/PACK	PACKS/CASE
MSVP.0708B.8	7x8" (18x20cm)	300 (BULK)	8
MSVP.0909.8	9x9" (23x23cm)	150	8
GWVPST0940*	9x9" (23x23cm)	20	40

Sealed Edge, Cleanroom Laundered

Ultra-Seal® 3000

100% continuous filament polyester knit

Ultra-Seal® 3000 is a 2-ply pinsonic tubular wiper, constructed using a patented sealed edge process resulting in reduced fiber generation and superior absorbency

SKU	SIZE	SHEETS/PACK	PACKS/CASE
US3000.0909.8	9x9" (23x23cm)	100	8
US3000.1212.6	12x12" (30x30cm)	100	6
GW300.ST.25*	12x12" (30x30cm)	10	5, 25

Sealed Border Edge, Cleanroom Laundered

ValuSeal® 1500

100% continuous filament polyester knit

Lightweight, high absorbency material design reduces actual cost in use compared to heavier weight products

SKU	SIZE	SHEETS/PACK	PACKS/CASE
VS1500.0909.8	9x9" (23x23cm)	150	8
VS1500.0909B.8	9x9" (23x23cm)	150 (BULK)	8

Sealed Edge, Cleanroom Laundered

ValuSeal-HA®

100% continuous filament polyester knit

Lightweight and absorbent construction with strong tear and abrasion resistance

SKU	SIZE	SHEETS/PACK	PACKS/CASE
VSHA.0909.8	9x9" (23x23cm)	150	8
VSHA.0909B.8	9x9" (23x23cm)	150 (BULK)	8
VSHA.1212.14	12x12" (30x30cm)	75	14
VSHA.1212B.14	12x12" (30x30cm)	75 (BULK)	14

Sealed Edge, Cleanroom Laundered

KNITTED WIPERS - LOT TO LOT TRACEABILITY - AUTOCLAVABLE

ValuSeal® IonX®

100% continuous filament polyester knit

ValuSeal® IonX® is manufactured using a proprietary ISO Class 4 cleanroom laundry process ensuring ultra-low NVR and ionic contamination levels.

SKU	SIZE	SHEETS/PACK	PACKS/CASE
VSI.0708B.14	7x8" (18x20cm)	150 (BULK)	14
VSI.0909.14	9x9" (23x23cm)	150	14
VSI.0909B.14	9x9" (23x23cm)	150 (BULK)	14

Sealed Edge, Cleanroom Laundered

ValuSeal®-LP

100% continuous filament polyester knit

Critically low particles, fibers, ions and extractables

SKU	SIZE	SHEETS/PACK	PACKS/CASE
VSLP.0909.8	9x9" (23x23cm)	150	8
VSLP.0909B.8	9x9" (23x23cm)	150 (BULK)	8
VSLP.1212.14	12x12" (30x30cm)	75	14
VSLP.1212B.14	12x12" (30x30cm)	75 (BULK)	14

Sealed Edge, Cleanroom Laundered

ISO CLASS 4-5

CLEANROOM CLASS 10-100 | EU GRADE B/C/D

MicroPolx® 2750

70% polyester/30% nylon microfiber

MicroPolx® 2750 is manufactured with ultrafine microfiber yarn with wedge shaped fiber cross sections that lift, entrap and remove particulates from critical surfaces. Soft hand and non-abrasive ultrasonic sealed edge are excellent for sensitive or scratch prone surfaces.

SKU	SIZE	SHEETS/PACK	PACKS/CASE
MPX2750.0909.10	9x9" (23x23cm)	100	10

Sealed Edge, Cleanroom Laundered

Super Polx® 1500

100% continuous filament polyester knit

Super Polx® 1500 absorbs two times its own weight and is lightweight and economical.

SKU	SIZE	SHEETS/PACK	PACKS/CASE
S1500.0909.8	9x9" (23x23cm)	150	8
S1500.0909B.6	9x9" (23x23cm)	150 (BULK)	6

Knife Cut, Cleanroom Laundered

Super Polx® 1200

100% continuous filament polyester knit

Super Polx® 1200 absorbs three times its own weight and is durable for abrasive wiping.

SKU	SIZE	SHEETS/PACK	PACKS/CASE
S1200.0404.10	4x4" (10x10cm)	600 (BULK)	10
S1200.0606.9	6x6" (15x15cm)	300	9
S1200.0708B.8	7x8" (18x20cm)	300 (BULK)	8
S1200.0909.8	9x9" (23x23cm)	150	8
S1200.0909B.8	9x9" (23x23cm)	150 (BULK)	8
S1200.1212.14	12x12" (30x30cm)	75	14
GW120ST0940*	9x9" (23x23cm)	20	40
GW120.ST.15*	12x12" (30x30cm)	20	5, 15

Knife Cut, Cleanroom Laundered

DID YOU KNOW?

Super Polx® 1200 has a soft hand and edge for sensitive surfaces and is available in a validated sterile version.

ISO CLASS 5-8

CLEANROOM CLASS 100-100,000 | EU GRADE B/C/D

Polx® 1200

100% continuous filament polyester knit

Polx® 1200 bridges the gap between more expensive laundered wipers and lower cost less critical nonwovens.

SKU	SIZE	SHEETS/PACK	PACKS/CASE
P1200.0404.18	4x4" (10x10cm)	150	18
P1200.0909.8	9x9" (23x23cm)	150	8
P1200.0909B.1	9x9" (23x23cm)	1200 (BULK)	
P1200.1212.14	12x12" (30x30cm)	75	14



Knife Cut Edge, Unlaundered



ISO CLASS 5-8

CLEANROOM CLASS 100-100,000 | EU GRADE B/C/D

1 EXCELLENT	3 FAIR
2 GOOD	4 NR

PRODUCT/SUBSTRATE	STERILE OPTION	ABSORBENCY	ABRASION RESISTANCE	SENSITIVE SURFACES	LOW- LINTING	SOLVENT COMPATIBLE
BLUESORB® 750 55% cellulose/45% polyester		1	2	2	3	2
DURX® 570 55% cellulose/45% polyester		1	2	2	3	2
DURX® 670 55% cellulose/45% polyester	•	1	2	2	2	2
DURX® 770 55% cellulose/45% polyester		1	2	2	2	2
ECOCLEAN® 35  100% cotton		1	2	2	2	2
ECOCLEAN® 60  100% cotton		1	2	2	2	2
EXSORBX® 400 100% polyester		1	2	1	2	2
MICROFIRST® 45% cellulose/55% polyester		1	2	2	2	2
MICROFIRST® LP 58% polyester/42% lyocell		1	1	1	2	2
PROJX® 700 55% cellulose/45% polyester		1	2	2	2	2
PRO-WIPE® 750 60% polypropylene/40% cellulose		1	2	1	1	2
PRO-WIPE® 880 100% polypropylene		2	2	1	1	1
VALUCLEAN® PLUS 50% rayon/50% polyester (not autoclavable)		1	2	2	2	2

BlueSorb® 750 55% cellulose/45% polyester

BlueSorb® 750's color allows differentiation for guarding against migration into critical areas as well as providing background differentiation for product inspection.

Durx® 670

55% cellulose/45% polyester

Durx® 670 is an economical general purpose wiper that is smooth, highly absorbent and durable

SKU	SIZE	SHEETS/PACK	PACKS/CASE
BS750.0404.40	4x4" (10x10cm)	300	40
BS750.0909.20	9x9" (23x23cm)	300	20
BS750.1212.20	12x12" (30x30cm)	150	20

Blue color, smooth, absorbent and durable

SKU	SIZE	SHEETS/PACK	PACKS/CASE
DR670.0303.40	3x3" (7.6 x7.6 cm)	300	40
DR670.0404.10	4x4" (10x10cm)	1200	10
DR670.0404.40	4x4" (10x10cm)	300	40
DR670.0707.12	7x7" (18x18cm)	300	12
DR670.0707.45	7x7" (18x18cm)	300	45
DR670.0708.36	7x8" (18x20cm)	300	36
DR670.0909.20	9x9" (23x23cm)	300	20
DR670.1212.20	12x12" (30x30cm)	150	20
DR670.1818.10	18x18" (46x46cm)	150	10
GW67ST0980*	9x9" (23x23cm)	20	80
GW67.ST.25*	12x12" (30x30cm)	20	5, 25
GW67.ST.60*	12x12" (30x30cm)	5	10, 6

No binders or chemical additives

Durx® 570 55% cellulose/45% polyester

Durx® 570 is a lightweight, economical, general purpose wiper that is smooth, highly absorbent and durable

SKU	SIZE	SHEETS/PACK	PACKS/CASE
DR570.0708.36	7x8" (18x20cm)	300	36
DR570.0909.10	9x9" (23x23cm)	300	10
DR570.0909.20	9x9" (23x23cm)	300	20
DR570.1212.10	12x12" (30x30cm)	150	10
DR570.1212.20	12x12" (30x30cm)	150	20

No binders or chemical additives

 = Biodegradable

NONWOVEN WIPERS - LOT TO LOT TRACEABILITY - AUTOCLAVABLE

Durx® 770

55% cellulose/45% polyester

Durx® 770 is a treated wiper for applications requiring lower fiber and particle counts than average nonwovens.

SKU	SIZE	SHEETS/PACK	PACKS/CASE
DR770.0404.40	4x4" (10x10cm)	300	40
DR770.0707.12	7x7" (18x18cm)	300	12
DR770.0707.45	7x7" (18x18cm)	300	45
DR770.0909.20	9x9" (23x23cm)	300	20
DR770.1212.20	12x12" (30x30cm)	150	20
DR770.1818.10	18x18" (46x46cm)	150	10

Enhanced with an ultra low particle and fiber treatment

EcoClean® 35

100% nonwoven cotton

EcoClean® 35 is 1/4 folded to fit the hand and promote proper wiping technique. The apertured surface aids in particle pick up and entrapment. Excellent gauze replacement.

SKU	SIZE	SHEETS/PACK	PACKS/CASE
ECW35.0505.30	10x10" (1/4 folded)	100	30

1/4 folded, apertured, 100% biodegradable

EcoClean® 60

100% nonwoven cotton

EcoClean® 60 is excellent for sensitive surfaces and high temperature applications. It has high strength and resists build up of static charge.

SKU	SIZE	SHEETS/PACK	PACKS/CASE
ECW60.0608.24	6X8" (15x20cm)	300	24
ECW60.0909.20	9x9" (23x23cm)	300	20
ECW60.1212.20	12x12" (30x30cm)	150	20

Soft, 100% biodegradable

Exsorbx® 400

100% polyester hydroentangled

Exsorbx® 400 prevents abrasion with its extremely soft and pliable surface. It has been treated with a proprietary process resulting in enhanced absorbency.

SKU	SIZE	SHEETS/PACK	PACKS/CASE
ES400.0404.10	4x4" (10x10cm)	1200	10
ES400.0909.20	9x9" (23x23cm)	300	20

No cellulose components, 100% synthetic

MicroFirst®

45% cellulose/55% polyester

MicroFirst® is apertured for increased absorbency and increased surface texture for improved cleaning efficiency.

SKU	SIZE	SHEETS/PACK	PACKS/CASE
MF.0909.20	9x9" (23x23cm)	300	20
MF.1212.20	12x12" (30x30cm)	150	20

Durable with high wet strength

MicroFirst® LP

58% polyester/42% lyocell

MicroFirst® LP has the highest combination of purity and absorbency available in nonwovens. It is soft and excellent for wiping delicate surfaces.

SKU	SIZE	SHEETS/PACK	PACKS/CASE
MFLP.0909.12	9x9" (23x23cm)	150	12

No binders or chemical additives

ProjX® 700

55% cellulose/45% polyester

ProjX® 700 is a lightweight industrial wiper. It has the excellent combination of synthetic polyester strength and cleanliness with the absorbency characteristics of cellulose.

SKU	SIZE	SHEETS/PACK	PACKS/CASE
PJ700.0909.20	9x9" (23x23cm)	200	20
PJ700.1212.20	12x12" (30x30cm)	150	20

Creped design for increased absorbency

Pro-Wipe® 750

60% polypropylene/40% cellulose

Pro-Wipe® 750 is a multi-layer composite wiper with a cellulose layer thermally bonded between the two polypropylene outer layers, resulting in an extremely durable and pure, solvent resistant industrial wiper with very low particle and fiber generation.

SKU	SIZE	SHEETS/PACK	PACKS/CASE
PW750.0404.20	4x4" (10x10cm)	400	20
PW750.0909.20	9x9" (23x23cm)	150	20
PW750.1212.20	12x12" (30x30cm)	75	20

Certified for Food Contact EC Regulation 1935 (2004)

Pro-Wipe® 880

100% polypropylene

Pro-Wipe® 880 is composed of multiple layers of polypropylene thermally bonded in a quilted construction. This combination results in exceptional cleanliness, absorbency, and chemical resistance to strong solvents, including acids.

SKU	SIZE	SHEETS/PACK	PACKS/CASE
PW880.0606.48	6x6" (15x15cm)	100	48
PW880.0810.12	8x10" (20x25cm)	100	12
PW880.1212.12	12x12" (30x30cm)	100	12

Certified for Food Contact EC Regulation 1935 (2004)

ValuClean® Plus

50% rayon/50% polyester

ValuClean® Plus is a high absorbency wiper compared to typical cellulose/polyester nonwovens. Its soft hand and low fiber shedding performance make it a good choice in critical cleaning applications where economy is important.

SKU	SIZE	SHEETS/PACK	PACKS/CASE
VCPL.0707.45	7x7" (18x18cm)	300	45
VCPL.0909.20	9x9" (23x23cm)	300	20
VCPL.1212.20	12x12" (30x30cm)	150	20

Rayon content for high absorbency (not autoclavable)

SPECIALTY WIPERS - LOT TO LOT TRACEABILITY - AUTOCLAVABLE

ISO CLASS 6-8

CLEANROOM CLASS 1000-100,000 | EU GRADE C/D

1	EXCELLENT	3	FAIR
2	GOOD	4	NR

PRODUCT/SUBSTRATE	STERILE OPTION	ABSORBENCY	ABRASION RESISTANCE	SENSITIVE SURFACES	LOW-LINTING	SOLVENT COMPATIBLE
LABX® 123 63% abaca/37% softwood		2	3	1	2	2
LABX® 170 100% manila hemp		2	3	1	2	2
LENSX® 90 70% rayon/30% cellulose		2	3	1	2	2
PURESORB™ 100% polyurethane foam		1	2	1	2	2
TWILLX® 1622 100% cotton		1	1	3	3	2

Labx® 123

100% manila hemp

Labx® 123 is a 100% biodegradable wiper engineered to be light-weight and low linting. It has excellent wet strength.

SKU	SIZE	SHEETS/PACK	PACKS/CASE
LB123.0707.20	7x7" (18x18cm)	1000	20
LB123.0909.60	9x9" (23x23cm)	500	60
LB123.1212.30	12x12" (30x30cm)	500	30

Meets government specification AA-50177, Type 1, Class 5

Labx® 170

80% abaca (manila hemp)/20% wood pulp

Labx® 170 is a cleaner alternative to industrial tissues and wipers. It has excellent wet strength, is low linting, is highly absorbent and 100% biodegradable.

SKU	SIZE	SHEETS/PACK	PACKS/CASE
LB170.0707.28	7x7" (18x18cm)	500	28
LB170.0909.40	9x9" (23x23cm)	500	40
LB170.1212.20	12x12" (30x30cm)	500	20
LB170.1818.10	18x18" (46x46cm)	500	10

Meets government specification AA-50177, Type 1, Class 4

Lenx® 90*

70% rayon/30% manila hemp

Lenx® 90 is a 100% biodegradable nonabrasive wiper engineered for extreme softness and for use in cleaning delicate surfaces.

SKU	SIZE	SHEETS/PACK	PACKS/CASE
LN90.0406.24	4x6" (10x15cm)	1000	24
LN90.0909.16	9x9" (23x23cm)	1000	16
LN90.1212.4	12x12" (30x30cm)	1000	4
LN90.2436.1	24x36" (61x91cm)	1000	1

Meets government specification AA-50177, Type 1, Class 1

Twilx® 1622

100% woven cotton

Twilx® 1622 is engineered for thermal stability and high heat applications. It is highly sorbent and durable.

SKU	SIZE	SHEETS/PACK	PACKS/CASE
T1622.0909.8	9x9" (23x23cm)	300	8
T1622.1212.4	12x12" (30x30cm)	150	4

Sturdy, durable and highly sorbent

PureSorb™

100% polyurethane foam

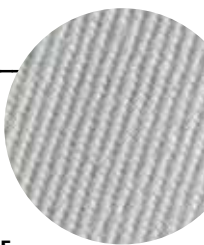
PureSorb is a 100ppi open cell polyester-based polyurethane foam wiper. It is laundered and hydrophilic. The thickness of the wiper is 0.15 inch.

SKU	SIZE	SHEETS/PACK	PACKS/CASE
PS040520	4x5" (10x13cm)	50	20
PS06098	6x9" (15x23cm)	50	8

Extremely pure and clean

DID YOU KNOW?

PureSorb™ has an "Easy Open Notch". It is double bagged with an opaque white outer bag that prevents light from reaching the product, preventing discoloration.



SATPAX® PRE-WETTED WIPERS GUIDE

Sterile pre-wetted wipers have the lot # on each pack with a 3 year shelf life.

ADVANTAGES

Health & Safety - no mixing and storing of hazardous liquids

Contamination - minimize volatile organic compounds (VOCs)

Control - no over-spraying or wetting of surfaces

Consistency - problems associated with under-or over-wetting the wiper are eliminated

Economy - greater cleaning efficiency and cleaning protocol consistency and effectiveness can be obtained

DEFINITIONS

DI (deionized) Water: Water that has had its mineral ions removed, such as cations from sodium, calcium, iron, copper and anions such as chloride and bromide.

WFI (Water for Injection): USP Water for Injection is prepared from water complying with quality attributes of "Drinking Water." Purified by distillation or a purification process that is equivalent or superior to distillation in the removal of chemicals or microorganisms. WFI water is tested and certified to be at or below a certain level of endotoxins.

IPA: Isopropyl alcohol can be produced in several distinct grades. The two most commonly used in pre-wetted wipers are USP and Semiconductor grades. The primary difference between the two grades is the level of purification. Semiconductor grades have much more stringent requirements for metallic content and therefore are much purer in use. USP grade is typically used for sterile products while semiconductor grade is typically used in all other products.

VOCs: Volatile organic compounds (VOCs) are organic chemicals that have a high vapor pressure at ordinary room temperature. Their high vapor pressure results from a low boiling point, which causes large numbers of molecules to evaporate or sublime from the liquid or solid form of the compound and enter the surrounding air.

SatPax® complies with the Global Harmonized System of Classification and Labeling of Chemicals



**"PRE-WETTED WIPERS
OPTIMIZED FOR
APPLICATION-SPECIFIC
CLEANING"**



ISO CLASS 3-5

CLEANROOM CLASS 1-100 | EU GRADE B/C/D

PRODUCT/SUBSTRATE	STERILE OPTION	PRODUCT FAMILY	SEALED BORDER	SEALED EDGE	CUT EDGE	SOLUTION OPTION	CANISTER OPTION
SATPAX® 3000 100% continuous filament polyester		Ultra-Seal® 3000	●			70% IPA/30% DI H ₂ O 9% IPA/91% DI H ₂ O	
SATPAX® VALUSEAL® HA-R 100% continuous filament polyester		ValuSeal® -HA		●		70% IPA/30% DI H ₂ O	
SATPAX® VALUSEAL® LP 100% continuous filament polyester		ValuSeal® -LP		●		70% IPA/30% DI H ₂ O	
SATPAX® VALUSEAL® 1500 100% continuous filament polyester		ValuSeal® 1500		●		70% IPA/30% DI H ₂ O 6% IPA/94% DI H ₂ O	
Sterile SATPAX® MICROSEAL® 1200 WFI 100% continuous filament polyester	●	MicroSeal® 1200		●		70% IPA/30% DI WFI	

SatPax® 3000

100% continuous filament polyester

SatPax® 3000 is a 2-ply pinsonic tubular wiper, constructed using a patented sealed edge process resulting in reduced fiber generation. It is available in a consistent 70% IPA/30% DI H₂O and 9% IPA/91% DI H₂O solution.

SKU	SIZE	SHEETS/ PACK	PACKS/ CASE	SAT.	VOC%
SPX3000.001.12	9X9" (23X23cm)	30	12	33%	31%
SPX3000.002.12	9X9" (23X23cm)	30	12	28%	4%

Sealed Border Edge, Cleanroom Laundered, Resealable Packaging

SatPax® ValuSeal® HA-R

100% continuous filament polyester

SatPax® ValuSeal® HA-R is pre-wetted with a consistent 70% IPA/30% DI H₂O solution saturated at a 60% level. The higher saturation level is recommended for solution contact time in the regulated industries.

SKU	SIZE	SHEETS/ PACK	PACKS/ CASE	SAT.	VOC%
SPXHAR.01.8	9X9" (23X23cm)	25	8	60%	42%

Sealed Edge, Cleanroom Laundered, Resealable Packaging

SatPax® ValuSeal® 1500

100% continuous filament polyester

SatPax® ValuSeal® 1500 is a lightweight wiper that is available pre-wetted with a consistent 70% IPA/30% DI H₂O and 6% IPA/94% DI H₂O solution.

SKU	SIZE	SHEETS/ PACK	PACKS/ CASE	SAT.	VOC%
SPXV1500.001.12	9X9" (23X23cm)	30	12	33%	35%
SPXV1500.004.12	9X9" (23X23cm)	30	12	33%	2.7%

Sealed Edge, Cleanroom Laundered, Resealable Packaging

SatPax® ValuSeal®-LP

100% continuous filament polyester

SatPax® ValuSeal®-LP is pre-wetted with a consistent 70% IPA/30% DI H₂O solution. It is critically low in particles, fibers, ions and extractables.

SKU	SIZE	SHEETS/ PACK	PACKS/ CASE	SAT.	VOC%
SPXVSLP.003.12	9X9" (23X23cm)	30	12	80%	43%

Sealed Edge, Cleanroom Laundered, Resealable Packaging

Sterile SatPax® MicroSeal® 1200 WFI

100% continuous filament polyester

Sterile SatPax® MicroSeal® 1200 WFI is pre-wetted with a consistent 70% IPA/30% WFI (Water for Injection) to a high saturation level. It is triple packaged for easy entry into sterile environments. It is gamma irradiated and sterile validated to a 10⁻⁶ Sterility Assurance Level per ANSI/AAMI/ISO guidelines.

SKU	SIZE	SHEETS/ PACK	PACKS/ CASE	SAT.	VOC%
SSPMS.01.5WFI*	12X12" (30X30cm)	50	5	60%	41%

Sealed Edge, Cleanroom Laundered, Resealable Packaging

DID YOU KNOW?

The SatPax® 1000 canister is made of HDPE high density polyethylene and therefore cannot be autoclaved. It can be gamma irradiated.



SATPAX® PRE-WETTED WIPERS - LOT TO LOT TRACEABILITY - AUTOCLAVABLE

ISO CLASS 4-5

CLEANROOM CLASS 10-100 | EU GRADE B/C/D

PRODUCT/SUBSTRATE	STERILE OPTION	PRODUCT FAMILY	SEALED BORDER	SEALED EDGE	CUT EDGE	SOLUTION OPTION	CANISTER OPTION
SATPAX® 1200-R 100% continuous filament polyester	●	SuperPolx® 1200			●	70% IPA/30% DI H ₂ O	

SatPax® 1200-R

100% continuous filament polyester

SatPax® 1200-R is pre-wetted with a consistent 70% IPA/30% DI H₂O solution with a higher saturation level for solution contact time in the regulated industries. The sterile version is gamma irradiated and sterile validated to a 10⁻⁶ Sterility Assurance Level per ANSI/AAMI/ISO guidelines.

SKU	SIZE	SHEETS/ PACK	PACKS/ CASE	SAT.	VOC%
SPX120R.001.12	9X9" (23X23cm)	30	12	60%	40.9%
SSP1200.003.12	9X9" (23X23cm)	30	12	60%	40.9%

Knife Cut Edge, Cleanroom Laundered, Resealable Packaging

ISO CLASS 5-8

CLEANROOM CLASS 100-100,000 | EU GRADE B/C/D

PRODUCT/SUBSTRATE	STERILE OPTION	PRODUCT FAMILY	SEALED BORDER	SEALED EDGE	CUT EDGE	SOLUTION OPTION	CANISTER OPTION
SATPAX® 550 100% polypropylene	●				●	70% IPA/30% DI H ₂ O	
SATPAX® 570 55% cellulose/45% polyester		Durx® 570			●	70% IPA/30% DI H ₂ O	
SATPAX® 670-R 55% cellulose/45% polyester	●	Durx® 670			●	70% IPA/30% DI H ₂ O	
SATPAX® 1000 55% cellulose/45% polyester	●	Durx® 670			●	70% IPA/30% DI H ₂ O 9% IPA/91% DI H ₂ O	●

SatPax® 1000

55% cellulose/45% polyester

SKU	SIZE	SHEETS/ PACK	PACKS/ CASE	SAT.	VOC%
SPX1000.001.12	9X9" (23X23cm)	75	12	33%	35%
SPX1000.002.12	9X9" (23X23cm)	75	12	45%	4.7%
SPXC1000.001.12	6X9" (15X23cm)	100	12	45%	40%
SPXC1000.01.12R	6X9" (15X23cm)	100	12	45%	40%
SPXC1000.002.12	6X9" (15X23cm)	100	12	45%	4.7%
SPXC1000.02.12R	6X9" (15X23cm)	100	12	45%	4.7%
SSP1000.001.24*	9X9" (23X23cm)	30	24	70%	46.2%

Knife Cut Edge, Resealable Packaging and **Canisters with Refills**

SatPax® 670-R

55% cellulose/45% polyester

SatPax® 670-R is a durable and strong pre-wetted wiper with a consistent 70% IPA/30% DI H₂O solution with a higher saturation level of 60% for solution contact time in the regulated industries. The sterile version is gamma irradiated and sterile validated to a 10⁻⁶ Sterility Assurance Level per ANSI/AAMI/ISO guidelines.

SKU	SIZE	SHEETS/ PACK	PACKS/ CASE	SAT.	VOC%
SSPX670R.001.12	9X9" (23X23cm)	75	12	60%	44.1%
SSP670.001.24*	9X9" (23X23cm)	30	24	60%	44.1%

Knife Cut Edge, Resealable Packaging

SatPax® 550

100% polypropylene

SatPax® 550 is a lightweight wiper that has very low levels of fibers, particles and ions. It is pre-wetted with a consistent 70% IPA/30% DI H₂O solution. The sterile version is gamma irradiated and sterile validated to a 10⁻⁶ Sterility Assurance Level per ANSI/AAMI/ISO guidelines.

SKU	SIZE	SHEETS/ PACK	PACKS/ CASE	SAT.	VOC%
SPX550.001.24	9X11" (23X28cm)	50	24	75%	51%
SPX550.003.36	7X11" (18X28cm)	75	36	75%	51%
SPX550.004.24	9X11" (23X28cm)	50	24	60%	48%
SPX550.005.36	7X11" (18X28cm)	75	36	60%	48%
SSP55000424*	9X11" (23X28cm)	50	24	65%	48%
SSP55000524*	7X11" (18X28cm)	50	24	65%	48%

Knife Cut Edge, Resealable Packaging

SatPax® 570

55% cellulose/45% polyester

SatPax® 570 is a smooth and durable pre-wetted wiper with a consistent 70% IPA/30% DI H₂O solution.

SKU	SIZE	SHEETS/ PACK	PACKS/ CASE	SAT.	VOC%
SPX570.001.24	7X8" (18X20cm)	90	24	45%	41.9%

Knife Cut Edge, Resealable Packaging

CHOICE® WIPER SELECTION GUIDE



CHOICE® *from* Berkshire®

CHOICE® is a value tiered category of wipers offering all the performance consistency of higher priced wipers. Best of all, **CHOICE®** is from **Berkshire**, the most trusted name in cleanroom supplies, which means quality you can count on. What's more, **CHOICE®** is backed by the Berkshire Guarantee - your money back if our wiper fails to perform according to specifications.

PACKAGING

All Berkshire wipers come in high quality, chemical resistant packaging material that has been tested for cleanroom use. All the wipers are double bagged for easy transfer and wipe down. **CHOICE®** wipers are packaged in stacked and value (bulk) configurations.

VALUE (BULK) PACKAGING

Value (bulk) packaged product is placed into a bag with a cursory inspection. The sheet count is arrived at by weight. There is 0% difference in performance between a value (bulk) packed and stacked product. There is however, a significant cost savings in a value (bulk) packaged wiper.

STACKED PRODUCT

Each wiper is inspected and stacked one on top of the other. The end result is a square pack that allows each wiper to be removed individually from the stack.

CHOICE® WIPERS - LOT TO LOT TRACEABILITY - AUTOCLAVABLE

ISO CLASS 3-5

CLEANROOM CLASS 1-100 | EU GRADE B/C/D

PRODUCT/SUBSTRATE	CLEANROOM LAUNDERED	EDGE TYPE	COMPATIBLE WITH IPA, ACETONE, AND OTHER SOLVENTS	VALUE (BULK) OPTION
Choice Edge 100% continuous filament polyester	•	Sealed Border Edge	•	
CHOICE® 700 100% continuous filament polyester	•	Sealed Edge	•	
CHOICE® 900 100% continuous filament polyester	•	Sealed Edge	•	
CHOICE® SuperSorb 100% continuous filament polyester	•	Sealed Edge	•	•

CHOICE® Edge

100% continuous filament polyester

CHOICE® Edge's 4-side border sealed edges increase durability and minimize fiber and particle release during use. The smooth knit construction and consistent border edges provide a scratch free wiping surface.

SKU	SIZE	SHEETS/PACK	PACKS/CASE
CHKE09.14	9x9" (23x23cm)	100	14

Sealed Border Edge, Cleanroom Laundered

CHOICE® 700

100% continuous filament polyester

CHOICE® 700's lightweight material design reduces actual cost in use compared to heavier weight products. It has critically low particles, fibers, ions and extractables. It is the most economical knit wiper in the CHOICE® category.

SKU	SIZE	SHEETS/PACK	PACKS/CASE
CH709.14	9x9" (23x23cm)	150	14

Sealed Edge, Cleanroom Laundered

CHOICE® 900

100% continuous filament polyester

CHOICE® 900 has high abrasion resistance with excellent absorbency. Its ultrasonically sealed edges reduces fiber and particle contamination.

SKU	SIZE	SHEETS/PACK	PACKS/CASE
CH909.10	9x9" (23x23cm)	150	10

Sealed Edge, Cleanroom Laundered

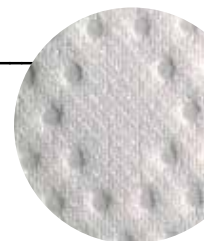
CHOICE® SuperSorb

100% continuous filament polyester

CHOICE® SuperSorb is a 2-ply pinsonic constructed cleanroom wiper with a unique diamond pattern. The pinsonic design adds surface texture that aids in stubborn residue removal.

SKU	SIZE	SHEETS/PACK	PACKS/CASE
CHSS09.14	9x9" (23x23cm)	75	14
CHSS09B.14	9x9" (23x23cm)	75 (BULK)	14
CHSS12.12	12x12" (30x30cm)	75	12

Sealed Edge, 2-ply, Cleanroom Laundered



ISO CLASS 5-8

CLEANROOM CLASS 100-100,000 | EU GRADE B/C/D

PRODUCT/SUBSTRATE	CLEANROOM LAUNDERED	EDGE TYPE	COMPATIBLE WITH IPA, ACETONE, AND OTHER SOLVENTS	VALUE (BULK) OPTION
CHOICE® 800 100% continuous filament polyester	•	Knife Cut Edge	•	

CHOICE® 800

100% continuous filament polyester

CHOICE® 800 has high abrasion resistance and has excellent absorbency.

SKU	SIZE	SHEETS/PACK	PACKS/CASE
CH809.10	9x9" (23x23cm)	150	10

Knife Cut Edge, Cleanroom Laundered

CHOICE® DOCUMENTATION PRODUCTS

CHOICE® Spiral Notebook (College Rule)

Cleanroom bond 72 g/m²

Spiral ring with PET (polyethylene terephthalate) cover can withstand long periods in use. White pages can be written on both sides, 100 pages/50 sheets. Spiral design allows book to lie flat and stay open.

SKU	SIZE	NOTEBOOKS/PACK	PACKS/CASE
CHNBK.0811SR.20	8.5x11" (22x28cm)	1	20
CHNBK.0508SR.40	5.5 x 8.5" (13x20cm)	1	40

DID YOU KNOW ?

College Rule is a style of notebook with paper that has 9/32 inch spacing between horizontal lines, with a vertical margin drawn about 1 1/4 inches from the left-hand edge of the page. It is excellent for those who need more information in a tighter space.



CHOICE® MOPS & ACCESSORIES

CHOICE® Mop Handle & Clamp

Economical CHOICE® lightweight mop handle & clamp accommodates most size string and loop mop heads.

Handle: Features and Advantages

- Anodized aluminum handle with blue polypropylene hand grip
- Fixed length at 56 inches (140cm)
- Easily connects to clamp - snap lock
- Corrosion and chemical resistant
- Not autoclavable

Clamp: Features and Advantages

- Blue polypropylene mop clamp
- Latch-style swing-away bar for quick and easy mophead changes
- Easily connects to handle - snap lock
- Corrosion and chemical resistant
- Autoclavable

SKU	PACKAGING
CHMH.SET.1	1 HANDLE/1 CLAMP PER CASE

DID YOU KNOW ?

The mop head can be laundered and re-used. Specific laundry instructions can be found on Product Information Sheets located at berkshire.com/shop.html

CHOICE® MicroFiber Mop Head

Microfibers are tiny fibers that have been split to produce ultra-fine fibers estimated to be at least 1/16" the size of a human hair. When woven together these fibers create a surface area covered with millions of spaces between the fibers to trap moisture, dirt and debris. This technology allows for the dirt and liquids to be "picked up" rather than being pushed around.

Features and Advantages

- White 88% polyester/12% nylon microfiber string mop with blue headband and tailband
- Microfiber yarns attract and trap dirt and debris
- Terry knit structure enhances absorbency to increase efficiency
- Tubular knit construction with sewn head and tail bands provides added durability
- Lot number assures traceability
- Autoclavable

SKU	PACKAGING	MOPS/PACK	MOPS/CASE
CHMFM.24	INDIVIDUALLY WRAPPED	1	24



PRO-WIPE® INDUSTRIAL WIPERS GUIDE



Pro-Wipe® SE

100% continuous filament polyester

Pro-Wipe® SE is an all-purpose wiper. It is an economical alternative to a standard cleanroom knitted polyester wiper.

Advantages:

- Lot to lot traceability
- Superior durability and strength
- Pre-laundering results in reduced particle contamination
- Chemically compatible with IPA, Acetone and other solvents

SKU	SIZE	STYLE	SHEETS/PACK	PACKS/CASE
PWSEK09.14	9X9" (23X23cm)	FLAT PACK	150	14

Sealed Edge, Laundered, Silicone Free

Pro-Wipe® OS

100% polypropylene

Pro-Wipe® OS is specifically designed to absorb oil and repel water.

Advantages:

- Lot to lot traceability
- Complies with FDA 21 CFR 176.170 - 177.1520 for food grade applications (3rd party test data available)
- Excellent resistance to acids and bases
- Low linting

SKU	SIZE	STYLE	SHEETS/PACK	PACKS/CASE
PWOS12.12	12X12" (30X30cm)	FLAT PACK	100	12

Surfactant Free, Silicone Free

Pro-Wipe® AP

50% rayon/50% polyester

Pro-Wipe® AP is an all purpose wiper. It is tough enough to be a rag replacement and clean enough for a controlled environment.

Advantages:

- Lot to lot traceability
- Smooth and soft with high strength and durability
- High absorbency compared to typical cellulose/polyester nonwoven wipers
- Low linting and abrasion resistant

SKU	SIZE	STYLE	SHEETS/PACK	PACKS/CASE
PWAP12.24	12X12" (30X30cm)	FLAT PACK	100	24
PWAP.1213QF.20	12X13" (30X33cm)	QUARTER FOLDED	50	20
PWAP.PR0915.4	9X15" (23X38cm)	PERFORATED ROLL	250	4

No Binders or Chemical Additives, Cloth-like Feel

Pro-Wipe® Xcel™

polypropylene/cellulose blend

Pro-Wipe® Xcel™ is a 3 layer all purpose industrial wiper that is constructed of polypropylene and cellulose blended together for super absorbency.

Advantages:

- 3 layers for superior absorbency
- Absorbs water and oil based solutions
- Smooth and soft with high strength and durability

SKU	SIZE	STYLE	SHEETS/PACK	PACKS/CASE
PWX.0708.36	7X8" (18X20cm)	FLAT PACK	250	36

No Binders or Chemical Additives



BCR® DOCUMENTATION SYSTEMS

Paper and notebooks can be a major source of particles, bacteria and micro-organisms in the cleanroom. BCR® Documentation Systems are made with the highest quality BCR® Bond paper to minimize contamination.



ISO CLASS 3-7

CLEANROOM CLASS 1 - 10,000 | EU GRADE B/C/D

BCR® Bond: Single Sheet Cleanroom Paper

104 g/m² (28lb)

PRODUCT	COLOR	WEIGHT	SKU	SIZE	SHEETS/PACK	PACKS/CASE	DOUBLE PACKED
BCR® BOND 1040	WHITE	HEAVY	BB104.081.10W	8.5 X 11 (22X28cm)	250	10	•
BCR® BOND 1040	BLUE	HEAVY	BB104.0811.10B	8.5 X 11 (22X28cm)	250	10	•
BCR® BOND 1040	WHITE	HEAVY	BB104.1117.5W	11 X 17 (28X43cm)	250	5	•
BCR® BOND 1040	BLUE	HEAVY	BB104.1117.5B	11 X 17 (28X43cm)	250	5	•

85 g/m² (24lb)

PRODUCT	COLOR	WEIGHT	SKU	SIZE	SHEETS/PACK	PACKS/CASE	DOUBLE PACKED
BCR® BOND 850	WHITE	MEDIUM	BB85.0811.10W	8.5 X 11 (22X28cm)	250	10	•
BCR® BOND 850	BLUE	MEDIUM	BB85.0811.10B	8.5 X 11 (22X28cm)	250	10	•
BCR® BOND 850	YELLOW	MEDIUM	BB85.0811.10C	8.5 X 11 (22X28cm)	250	10	•
BCR® BOND 850	PINK	MEDIUM	BB85.0811.10P	8.5 X 11 (22X28cm)	250	10	•
BCR® BOND 850	GREEN	MEDIUM	BB85.0811.10G	8.5 X 11 (22X28cm)	250	10	•

68 g/m² (18lb)

PRODUCT	COLOR	WEIGHT	SKU	SIZE	SHEETS/PACK	PACKS/CASE	DOUBLE PACKED
BCR® BOND 680	WHITE	LIGHT	BB68.0811.8W	8.5 X 11 (22X28cm)	250	10	•
BCR® BOND 680	BLUE	LIGHT	BB68.0811.8B	8.5 X 11 (22X28cm)	250	10	•

ADVANTAGES

- Purest cellulose minimizes contamination
- Full lot tracing on every **case** ensures consistent quality and control
- Specialized coating reduces particles and fibers generation
- Retains ink from copiers and printers to reduce smudging
- Heat resistant under extreme printer temperatures

APPLICATIONS

- Cleanroom manuals, work instructions, standard operating procedures (SOPs)

NATURAL RUBBER-LATEX FREE

BCR® DOCUMENTATION SYSTEMS

ISO CLASS 3-7

CLEANROOM CLASS 1 - 10,000 | EU GRADE B/C/D

EcoBond®: Single Sheet Recyclable Cleanroom Paper

85 g/m² (24lb)

PRODUCT	COLOR	WEIGHT	SKU	SIZE	SHEETS/PACK	PACKS/CASE	DOUBLE PACKED
ECOBOND®	WHITE	MEDIUM	EC085.0811.WH	8.5 X 11 (22X28cm)	250	10	•

ADVANTAGES

- Purest and sustainable cellulose minimizes contamination
- Full lot tracing on every **case** ensures consistent quality and control
- Talc free
- Good toner adhesion
- High strength and heat resistance

APPLICATIONS

- Cleanroom manuals, work instructions, standard operating procedures (SOPs)

NATURAL RUBBER-LATEX FREE 
100% RECYCLABLE

ISO CLASS 3-7

CLEANROOM CLASS 1 - 10,000 | EU GRADE B/C/D

BCR® Cleanroom Spiral Notebooks

104 g/m² (28lb)

PRODUCT	COLOR	WEIGHT AND STYLE	SKU	SIZE	SHEETS/PACK	PACKS/CASE	DOUBLE PACKED
BCR® 1040 SPIRAL NOTEBOOK	WHITE	HEAVY COLLEGE RULE	BSNB.0508CR.20	5.5 X 8.5 (14X22cm)	1	20	•
BCR® 1040 SPIRAL NOTEBOOK	WHITE	HEAVY 1/4 INCH GRID	BSNB.05081/4.20	5.5 X 8.5 (14X22cm)	1	20	•
BCR® 1040 SPIRAL NOTEBOOK	WHITE	HEAVY COLLEGE RULE	BSNB.0811CR.10	8.5 X 11 (22X28cm)	1	10	•
BCR® 1040 SPIRAL NOTEBOOK	WHITE	HEAVY 1/4 INCH GRID	BSNB.08111/4.10	8.5 X 11 (22X28cm)	1	10	•

DID YOU KNOW ?

1/4 Inch Grid (Narrow ruled) paper has 1/4 inch spacing between ruling lines, and is used by those with smaller handwriting or to fit more lines per page.

DID YOU KNOW ?

College rule paper has 9/32 inch spacing between horizontal lines, with a vertical margin drawn about 1 1/4 inches from the left-hand margin. It is excellent for those who need more information in a tighter space.



BCR® GLOVE LINERS

HAND HEALTH AND OPERATOR COMFORT

BCR® Glove Liners enhance operator comfort by reducing perspiration and contact dermatitis associated with wearing latex, vinyl, nitrile, neoprene and other gloves. They are ambidextrous for easy stock control. All of Berkshire's glove liners can be laundered for multiple reuse.

BCR® Polyester Glove Liners

Medium Weight

PRODUCT	SKU	SIZE	CUFF COLOR	PAIRS/PACK	PACKS/CASE
BCR® HALF-FINGER	BGL2.20R	REGULAR	BLUE	10	20
BCR® HALF-FINGER	BGL2.200BR	REGULAR	WHITE	200 (BULK)	1
BCR® HALF-FINGER	BGL2.20L	LARGE	BLUE	10	20
BCR® FULL-FINGER	BGL3.20L	LARGE	BLUE	10	20
BCR® FULL-FINGER	BGL3.20R	REGULAR	WHITE	10	20

BCR® Single Knit Nylon Glove Liners

Lightweight

PRODUCT	SKU	SIZE	CUFF COLOR	PAIRS/PACK	PACKS/CASE
BCR® HALF-FINGER	BGL6.200SB	SMALL	BLACK	200 (BULK)	1
BCR® HALF-FINGER	BGL6.200LB	LARGE	RED	200 (BULK)	1
BCR® FULL-FINGER	BGL7.200SB	SMALL	BLUE	200 (BULK)	1
BCR® FULL-FINGER	BGL7.200MB	MEDIUM	ORANGE	200 (BULK)	1
BCR® FULL-FINGER	BGL7.200LB	LARGE	GREEN	200 (BULK)	1
BCR® FULL-FINGER	BGL.200XLB	X-LARGE	RED	200 (BULK)	1

BCR® Ultra Glove Liners

Medium Weight

Fortify•AM® and Fortify Sta•Cool® Polyester Glove Liners

PRODUCT	SKU	SIZE	CUFF COLOR	PAIRS/PACK	PACKS/CASE
BCR® HALF-FINGER	BGL2U20R	REGULAR	GREY	10	20
BCR® HALF-FINGER	BGL2U20L	LARGE	PURPLE	10	20
BCR® FULL-FINGER	BGL3U20R	REGULAR	GREY	10	20
BCR® FULL-FINGER	BGL3U20L	LARGE	PURPLE	10	20

Fortify•AM® technology protects the fabric from microbial growth. The protection does not diminish with laundering and reuse.

Fortify Sta•Cool® technology provides the glove liners with superior cool feeling for extreme moisture management. They reduce the odor caused by hand perspiration.

Each glove liner is constructed using a special seamless technique.

Half-finger versions are ideal for operators who need to retain maximum dexterity and fingertip sensitivity.

Each glove size has a colored cuff for easy stock control.

BCR® FACE MASKS

EASY BREATHING COMFORT WITH SUPERIOR PERFORMANCE

People are a significant source of contamination in any critical manufacturing process. Berkshire masks are designed to protect your cleanroom from human contamination. Berkshire masks provide comfort for operators.

BCR® Mask 3-Layer Polyurethane Earloops

SKU	SIZE	MASKS/ PACK	PACKS/ CASE	INNERFACING MEDIUM	FILTER	OUTERFACING
BM.1.12	180mm	50	12	POLYPROPYLENE	POLYPROPYLENE	POLYPROPYLENE - BLUE

BCR® Mask 3-Layer Polyurethane Headbands - Extra Wide

SKU	SIZE	MASKS/ PACK	PACKS/ CASE	INNERFACING MEDIUM	FILTER	OUTERFACING
BM.1BEWO.12	210mm	50 (BULK)	12	POLYPROPYLENE	POLYPROPYLENE	POLYPROPYLENE - BLUE

BCR® Mask 3-Layer Nylon Earloops

SKU	SIZE	MASKS/ PACK	PACKS/ CASE	INNERFACING MEDIUM	FILTER	OUTERFACING
BM.1FWE.50	180mm	50 (BULK)	50	POLYPROPYLENE	POLYETHYLENE	POLYPROPYLENE - WHITE

BCR® Gamma Irradiated Face Masks

- Gamma Irradiated with a minimum dose of 25 kGy
- 20 individual packaged masks are bagged together with an irradiation indicator to show evidence of irradiation
- Header style outer packaging with package integrity testing and lot number for traceability
- Certificates of Irradiation available online 24/7 for each lot processed

3-Layers

Innerfacing: Viscose polyester
Outerfacing: Polyester viscose
Filter Media: Polyester

BCR® GI Face Mask with Earloops

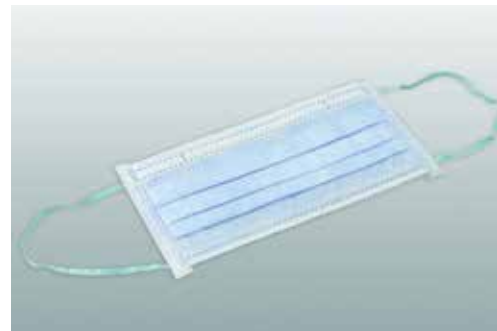
SKU	SIZE	MASKS/PACK	PACKS/CASE
BM180GIE10	180mm	20	10
BM210GIE10	210mm	20	10

BCR® GI Face Mask with Head Ties

SKU	SIZE	MASKS/PACK	PACKS/CASE
BM180GIT10	180mm	20	10
BM210GIT10	210mm	20	10

DID YOU KNOW ?

Test results for Particle Filtration Efficiency, Bacterial Filtration Efficiency, Differential Pressure and Helmke Drum can be found on Product Information Sheets located at berkshire.com/



LAB-TIPS® SWABS GUIDE

Berkshire's Lab-Tips® swabs are exceptionally pure for precision cleaning, surface sampling, applying lubricants and other liquids, and other validation procedures.

SWAB SELECTION GUIDE

PRODUCT	HEAD MATERIAL	SWAB FORM	HEAD TYPE	HANDLE LENGTH	LAUNDERED	TOC	ESD
LTP70F	KNITTED POLYESTER	SOCK	FLEXIBLE	SHORT	●		
LTP70R	KNITTED POLYESTER	SOCK	RIGID	SHORT	●		
LTP125	KNITTED POLYESTER	SOCK	RIGID	MEDIUM	●		
LTP125S	KNITTED POLYESTER	SOCK	SEMI-FLEXIBLE	MEDIUM	●		
LTP1465	KNITTED POLYESTER	SOCK	FLEXIBLE	LONG	●		
LTP1465ESD	KNITTED POLYESTER	SOCK	FLEXIBLE	LONG	●		●
LTP125TOC	KNITTED POLYESTER	SOCK	SEMI-FLEXIBLE	MEDIUM	●	●	
LTO70F	OPEN CELL FOAM	SOCK	RIGID	SHORT	●		
LTO70R	OPEN CELL FOAM	SOCK	RIGID	SHORT	●		
LTO70RES	OPEN CELL FOAM	SOCK	RIGID	SHORT	●		●
LTO70P	OPEN CELL FOAM	SOCK	RIGID	SHORT	●		
LTO70PESD	OPEN CELL FOAM	SOCK	RIGID	SHORT	●		●
LTA03163	OPEN CELL FOAM	SOCK	RIGID	SHORT	●		
LT000125	OPEN CELL FOAM	SOCK	RIGID	MEDIUM	●		
LT01465	OPEN CELL FOAM	SOCK	FLEXIBLE	LONG	●		
LTC125	CLOSED CELL FOAM	SOCK	RIGID	MEDIUM			
LTN70F	NONWOVEN POLYESTER	SOCK	FLEXIBLE	SHORT			
LTN70F	NONWOVEN POLYESTER	SOCK	FLEXIBLE	LONG			

CONSTRUCTION

Sock tips are made by sandwiching the swab handle between multiple layers of thermoplastic head material. The head material is completely sealed and bonded to the handle with heat and pressure. No contaminating adhesives are used in the manufacturing of Berkshire's sock tip swabs.

PACKAGING

Lab-Tips® are double bagged in cleanroom bags manufactured from high purity polyethylene resin that ensures ultra-low organic and inorganic residues. Bags are free from silicone, amides, and DP and comply with RoHS directives. An easy tear notch and solvent resistant inner pack labels ensure ease of use.



LAB-TIPS® KNITTED POLYESTER SWABS

CLEANROOM LAUNDERED DOUBLE LAYER 100% POLYESTER KNIT SWAB HEADS

Berkshire's knitted polyester swabs are made from cleanroom laundered, continuous filament polyester for exceptional purity. They offer low ionic contamination levels along with excellent durability and absorbent capacity. Knitted polyester swabs have excellent chemical resistance and are compatible with organic solvents. The handles are made of 100% polypropylene.

SKU	HEAD WIDTH	HEAD THICKNESS	HEAD LENGTH	HANDLE WIDTH	HANDLE THICKNESS	HANDLE LENGTH	TOTAL SWAB LENGTH	PACKAGING
LTP70F.20	4.0mm (0.157")	2.5mm (0.098")	11.0mm (0.433")	2.2mm (0.086")	2.2mm (0.086")	59.0mm (2.32")	70.0mm (2.75")	100 SWABS/PACK 20 PACKS/CASE

Polyester swab with flexible paddle head for cleaning grooved, slotted and recessed areas.

SKU	HEAD WIDTH	HEAD THICKNESS	HEAD LENGTH	HANDLE WIDTH	HANDLE THICKNESS	HANDLE LENGTH	TOTAL SWAB LENGTH	PACKAGING
LTP70R.20	4.0mm (0.157")	4.0mm (0.157")	12.5mm (0.492")	2.8mm (0.11")	2.8mm (0.11")	58.0mm (2.28")	70.0mm (2.75")	100 SWABS/PACK 20 PACKS/CASE

Polyester swab with a short handle and rigid core provide firm support and precise control

SKU	HEAD WIDTH	HEAD THICKNESS	HEAD LENGTH	HANDLE WIDTH	HANDLE THICKNESS	HANDLE LENGTH	TOTAL SWAB LENGTH	PACKAGING
LTP125.5	12.7mm (0.50")	5.0mm (0.196")	25.0mm (0.984")	5.5mm (0.216")	2.8mm (0.11")	100.0mm (3.94")	125.0mm (4.92")	100 SWABS/PACK 5 PACKS/CASE

Polyester swab with a durable flat head provide maximum surface area for cleaning or sampling broad flat surfaces

SKU	HEAD WIDTH	HEAD THICKNESS	HEAD LENGTH	HANDLE WIDTH	HANDLE THICKNESS	HANDLE LENGTH	TOTAL SWAB LENGTH	PACKAGING
LTP125S.25	12.7mm (0.50")	5.0mm (0.196")	25.0mm (0.984")	5.5mm (0.216")	2.8mm (0.11")	100.0mm (3.94")	125.0mm (4.92")	20 SWABS/PACK 25 PACKS/CASE
LTP125TOC.25	12.7mm (0.50")	5.0mm (0.196")	25.0mm (0.984")	5.5mm (0.216")	2.8mm (0.11")	100.0mm (3.94")	125.0mm (4.92")	20 SWABS/PACK 25 PACKS/CASE

Polyester sampling swab with a unique semi-flexible internal paddle and grooves on the handle for easy snapping

- Polyester designed for surface cleaning validation using the analytical technique of total organic carbon (TOC) analysis
- Each QC lot is certified with ultra-low TOC levels (<50ppb)

LAB-TIPS® KNITTED POLYESTER SWABS

SKU	HEAD WIDTH	HEAD THICKNESS	HEAD LENGTH	HANDLE WIDTH	HANDLE THICKNESS	HANDLE LENGTH	TOTAL SWAB LENGTH	PACKAGING
LTP1465.10	7.0mm (0.275")	4.0mm (0.157")	16.8mm (0.661")	3.1mm (0.122")	3.1mm (0.122")	145.0mm (5.71")	162.0mm (6.38")	100 SWABS/PACK 10 PACKS/CASE
LTP1465ESD10	7.0mm (0.275")	4.0mm (0.157")	16.8mm (0.661")	3.1mm (0.122")	3.1mm (0.122")	145.0mm (5.71")	162.0mm (6.38")	100 SWABS/PACK 10 PACKS/CASE

Polyester swab with a long handle for cleaning hard to reach areas has high abrasion resistance for rigorous cleaning applications

Swab features an ESD pink handle, engineered with a static dissipative polymer and is packaged in an anti-static bag

LAB-TIPS® OPEN CELL (RETICULATED) FOAM SWABS

CLEANROOM LAUNDERED 100 PPI OPEN CELL POLYURETHANE FOAM SWAB HEADS

Open Cell or reticulated foams are structures in which the cell windows have been removed by thermal or chemical means. This process results in a structure that has **excellent liquid retention** and **particle entrapment capability**. Berkshire's open cell foam swabs have **excellent chemical resistance** and are compatible with organic solvents.

PPI = Pores/Linear Inch.
The number of cells per linear inch in the foam membrane. A measure of foam density.

SKU	HEAD WIDTH	HEAD THICKNESS	HEAD LENGTH	HANDLE WIDTH	HANDLE THICKNESS	HANDLE LENGTH	TOTAL SWAB LENGTH	PACKAGING
LTO70F.20	4.0mm (0.157")	2.0mm (0.078")	11.0mm (0.433")	2.2mm (0.086")	2.2mm (0.086")	59.0mm (2.32")	70.0mm (2.75")	100 SWABS/PACK 20 PACKS/CASE

Foam swab with a short handle and flexible core for general purpose cleaning in confined areas with superior particle entrapment capability

SKU	HEAD WIDTH	HEAD THICKNESS	HEAD LENGTH	HANDLE WIDTH	HANDLE THICKNESS	HANDLE LENGTH	TOTAL SWAB LENGTH	PACKAGING
LTO70R.20	4.0mm (0.157")	4.0mm (0.157")	12.5mm (0.492")	2.8mm (0.11")	2.8mm (0.11")	58.0mm (2.28")	70.0mm (2.75")	100 SWABS/PACK 20 PACKS/CASE
LTO70RES20	4.0mm (0.157")	4.0mm (0.157")	12.5mm (0.492")	2.8mm (0.11")	2.8mm (0.11")	58.0mm (2.28")	70.0mm (2.75")	100 SWABS/PACK 20 PACKS/CASE

Foam swab with a short handle and rigid core for general purpose cleaning in confined areas with superior particle entrapment capability

Swab features an ESD pink handle, engineered with a static dissipative polymer and is packaged in an anti-static bag

LAB-TIPS® OPEN CELL (RETICULATED) FOAM SWABS

SKU	HEAD WIDTH	HEAD THICKNESS	HEAD LENGTH	HANDLE WIDTH	HANDLE THICKNESS	HANDLE LENGTH	TOTAL SWAB LENGTH	PACKAGING
LTO70P.20	4.0mm (0.157")	4.0mm (0.157")	20.0mm (0.787")	2.5mm (0.098")	2.5mm (0.098")	50.0mm (1.97")	70.0mm (2.75")	100 SWABS/PACK 20 PACKS/CASE
LTO70PESD20	4.0mm (0.157")	4.0mm (0.157")	20.0mm (0.787")	2.5mm (0.098")	2.5mm (0.098")	50.0mm (1.97")	70.0mm (2.75")	100 SWABS/PACK 20 PACKS/CASE

Foam swab with a precision pointed head and a small tapered handle for cleaning small slotted and grooved areas

Swab features an ESD pink handle, engineered with a static dissipative polymer and is packaged in an anti-static bag

SKU	HEAD WIDTH	HEAD THICKNESS	HEAD LENGTH	HANDLE WIDTH	HANDLE THICKNESS	HANDLE LENGTH	TOTAL SWAB LENGTH	PACKAGING
LTA03163.10	5.0mm (0.19")	3.0mm (0.118")	13.0mm (0.5")	2.4mm (0.093")	2.4mm (0.093")	71.0mm (2.8")	76.0mm (3.0")	100 SWABS/PACK 10 PACKS/CASE

Foam swab with a short handle and rigid core for general purpose cleaning in confined areas with superior particle entrapment capability

SKU	HEAD WIDTH	HEAD THICKNESS	HEAD LENGTH	HANDLE WIDTH	HANDLE THICKNESS	HANDLE LENGTH	TOTAL SWAB LENGTH	PACKAGING
LT000125.10	13.0mm (0.50")	9.0mm (0.35")	25.0mm (1.0")	5.0mm (0.093")	3.0mm (0.12")	125.0mm (4.9")	127.0mm (5.0")	100 SWABS/PACK 10 PACKS/CASE

Foam swab with an absorbent large rectangular flat head provides a maximum surface area for cleaning broad flat surfaces

SKU	HEAD WIDTH	HEAD THICKNESS	HEAD LENGTH	HANDLE WIDTH	HANDLE THICKNESS	HANDLE LENGTH	TOTAL SWAB LENGTH	PACKAGING
LTO1465.10	7.0mm (0.275")	3.0mm (0.118")	16.8mm (0.661")	3.1mm (0.122")	3.1mm (0.122")	145.0mm (5.71")	162.0mm (6.38")	100 SWABS/PACK 10 PACKS/CASE

Foam swab with a long handle for cleaning hard to reach areas with good sorbency and excellent solvent hold

LAB-TIPS® CLOSED CELL (NON-RETICULATED) FOAM SWABS

CLEANROOM LAUNDERED 100 PPI CLOSED CELL POLYURETHANE FOAM SWAB HEADS

Closed Cell or non-reticulated foams are completely sealed with cell windows intact. Closed cell foams generally exhibit higher density, greater durability and reduced absorption versus open cell foams. Berkshire's closed cell foam swabs are manufactured from 100 ppi polyurethane.

SKU	HEAD WIDTH	HEAD THICKNESS	HEAD LENGTH	HANDLE WIDTH	HANDLE THICKNESS	HANDLE LENGTH	TOTAL SWAB LENGTH	PACKAGING
LTC125.5	13.0mm (0.511")	8.0mm (0.315")	25.0mm (0.984")	5.5mm (0.216")	2.8mm (0.11")	100.0mm (3.94")	125.0mm (4.92")	100 SWABS/PACK 5 PACKS/CASE

Foam swab with a durable large rectangular head provide maximum surface area for cleaning broad flat surfaces

LAB-TIPS® NONWOVEN 100% POLYESTER SWABS

HYDROENTANGLED 100% POLYESTER SWAB HEADS

Swabs made from 100% polyester nonwoven material are absorbent, non-abrasive and have very low ionic contamination and NVR levels. These swabs are also compatible with most solvents.

SKU	HEAD WIDTH	HEAD THICKNESS	HEAD LENGTH	HANDLE WIDTH	HANDLE THICKNESS	HANDLE LENGTH	TOTAL SWAB LENGTH	PACKAGING
LTN70F.20	4.0mm (0.157")	2.0mm (0.078")	11.0mm (0.433")	2.2mm (0.086")	2.2mm (0.086")	59.0mm (2.32")	70.0mm (2.75")	100 SWABS/PACK 20 PACKS/CASE

Nonwoven polyester swab with short handle and small flexible tip for cleaning very small grooved sensitive areas, soft and non-abrasive

SKU	HEAD WIDTH	HEAD THICKNESS	HEAD LENGTH	HANDLE WIDTH	HANDLE THICKNESS	HANDLE LENGTH	TOTAL SWAB LENGTH	PACKAGING
LTN1465.10	7.0mm (0.275")	4.0mm (0.118")	17.0mm (0.67")	3.1mm (0.122")	3.1mm (0.122")	145.0mm (5.71")	162.0mm (6.38")	100 SWABS/PACK 10 PACKS/CASE

Nonwoven polyester swab with a long handle for cleaning hard to reach areas with good sorbency and excellent solvent hold

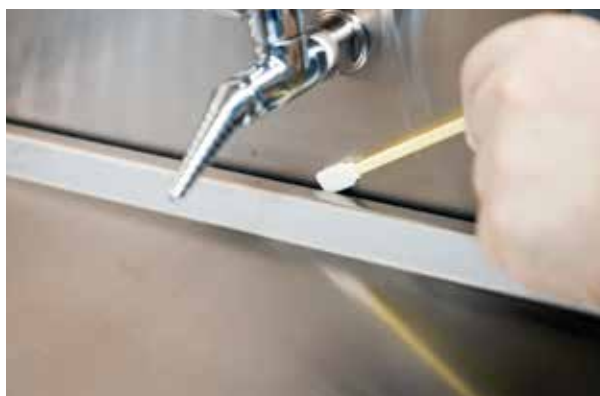
SWAB/SOLVENT COMPATIBILITY CHART

SOLVENT	HEAD SUBSTRATE	
	FOAM	POLYESTER
ACETIC ACID	U	U
ACETONE	S	U
ACETONITRILE	U	U
AMMONIA, ANHYDROUS	U	U
ANILINE	S	U
BENZENE	S	U
CARBON TETRACHLORIDE	S	U
CHLOROFORM	S	U
CHLOROPHENOL	D	D
CHROMIC ACID	D	D
CYCLOHEXANE	S	U
DIMETHYLFORMAMIDE	D	S
DIMETHYLSULFOXIDE	D	S
ETHYL ACETATE	S	U
ETHYL ALCOHOL	U	U
ETHYL CHLORIDE	S	U
FORMIC ACID	D	U
HEXANE	U	U

SOLVENT	HEAD SUBSTRATE	
	FOAM	POLYESTER
HYDROCHLORIC ACID 48%	D	D
HYDROGEN PEROXIDE	D	U
ISOPROPYL ALCOHOL	U	U
METHANOL	S	U
METHYL ETHYL KETONE	S	U
METHYLENE CHLORIDE	S	U
NITRIC ACID 100%	D	D
NITROBENZENE	S	U
PERCHLOROETHYLENE	U	U
PHOSPHORIC ACID 85%	D	U
SODIUM HYDROXIDE 36%	S	U
SULFURIC ACID 98%	D	D
TOLUENE	S	U
TRICHLOROETHYLENE	S	U
VINYL ACETATE	S	U
WATER	U	U
XYLENE	S	U

NOTE:

U = UNAFFECTED, S = SWELLS, D = DEGRADES



BCR® MOP SELECTION GUIDE



LOOPED STRING



DOUBLE SIDED



ERGONOMIC



**LARGE
W/SPRINGS**



**LARGE
W/PLASTIC EYES**



**SMALL
W/PLASTIC EYES**



EASYCLEAN® 360

	STRING	DOUBLE SIDED	ERGONOMIC	LARGE W/SPRINGS	LARGE W/PLASTIC EYES	SMALL W/PLASTIC EYES	EASYCLEAN® 360
AUTOCLAVABLE	●	●	●	●			●
FLOORS	●	●	●	●	●	●	
WALLS		●	●	●	●	●	
CEILINGS		●	●	●	●	●	
RABS							●
ISOLATORS							●
CACI/CLASS II BSC							●
LARGE AREAS	●	●	●	●	●		
SMALL AREAS		●	●	●	●	●	●
UNDER EQUIPMENT		●	●	●	●	●	
WET CLEANING	●	●	●	●	●	●	●
DRY CLEANING		●	●	●	●	●	●

BCR® CLEANROOM LOOPED STRING MOP SYSTEM

Cleanroom Looped String Mop Heads*

Looped-end-fan-tail construction to minimize particle generation

BCR® Mop 1

Nonwoven polyester

This is an absorbent, economical, unlaundered soft mop designed for both the easy removal of contamination from floors and for the distribution of disinfectants.

PRODUCT	SKU	MOP/PACK	MOPS/CASE
BCR® MOP 1	BCM.1.12	1	12



BCR® Mop 4

100% knitted polyester

Laundered and packaged in an ISO Class 4 cleanroom, this mop has low particulates and fibers. It is has excellent chemical and abrasion resistance, with a lot number on each pack ensuring traceability. [Available gamma irradiated.](#)

PRODUCT	SKU	MOP/PACK	MOPS/CASE
BCR® MOP 4	BCM.4.12	1	12
BCR® MOP 4	BCM.4IR.12	1	12

CLEANROOM STRING MOP HANDLE & CLAMP

Handle: Features and Advantages

- Anodized aluminum handle
- Fixed length of 56" (140cm)
- Lightweight
- Easily connects to clamp
- Corrosion and chemical resistant
- Not Autoclavable

Clamp: Features and Advantages

- Blue polypropylene mop clamp
- Latch-style swing-away bar for quick and easy mophead changes
- Easily connects to handle
- Autoclavable
- Corrosion and chemical resistant

PRODUCT	SKU	PACKAGING	MOPS/HANDLES/ CASE
CHOICE MOP HANDLE & CLAMP SET	CHMH.SET.1	1 HANDLE & 1 CLAMP	1

Cleanroom Looped String Mop Wringer, Cart and Buckets - Fully Autoclavable

Composition and Technology

- The Cleanroom String Mop Cart is made of high quality stainless steel and is fully autoclavable
- Locking casters provide stability
- Wringer is made of durable plastic, suitability for the one-step wet cleaning process
- Ergonomically designed handle serves as a rest for the mop handle and makes the cart easy to maneuver in tight production areas
- Two 20 liter polypropylene buckets are color coded blue and red to differentiate between clean and dirty solutions

**Internal bucket graduations help insure correct mixing of cleaning and disinfecting solutions*

PRODUCT	SKU	QTY PER CASE
STAINLESS STEEL MOP CART WITH BUCKETS	BCRMOPCART1	1
STAINLESS STEEL STRING MOP WRINGER	BCRSTRWRINGER1	1



DID YOU KNOW ?

Certificates of Irradiation are available 24/7 on berkshire.shop.html for BCM.4IR.12



ERGONOMIC 16" CLEANROOM FLAT MOP SYSTEM

The ergonomic 16" Flat Mop holder is a versatile flat mop suitable for almost all application areas. Your cleanroom staff can attach mops faster and more efficiently than ever. Thanks to the cleanroom flat mops V shape, it slips smoothly into the pouches of the mop reducing bending and decreasing injury.

- Ergonomic working hand-switch opening of the holder and mop discarding while standing upright
- No touching of soiled mops when discarding
- Completely flat action for cleaning under and behind equipment

PRODUCT	SKU	SIZE	QTY PER CASE
V FLAT MOP HOLDER WITH CLIPS	BCRVSMOP10	4 X 16" (10 X 40cm)	10 V FLAT MOPS/20 CLIPS
V FLAT MOP HOLDER WITH CLIPS	BCRVSMOP1	4 X 16" (10 X 40cm)	1 V FLAT MOPS/2 CLIPS
TELESCOPING HANDLE	BCRHANDLE10	35-65" (89-165cm)	10
TELESCOPING HANDLE	BCRHANDLE1	35-65" (89-165cm)	1
V FLAT MOP CLIPS	BCRVSCIP20	N/A	20
V FLAT MOP WRINGER	BCRVSWRINGER1	N/A	1

CLEANROOM ERGONOMIC FLAT MOP COVERS

Nonwoven Cover

- 68 gsm polyester/cellulose outer cover
- 100% rayon nonwoven inner layer provides superior absorbency
- High tear strength, individually wrapped

PRODUCT	SKU	SIZE	COVERS/PACK	PACKS/CASE
V MOP NONWOVEN COVER	FMC4NW20	4.5 X 15" (11 X 38cm)	10	20

Foam Cover

- Abrasion resistant polyester knit cleanroom fabric laminated to absorbent polyurethane foam
- Laser cut and cleanroom laundered to minimize fiber and particle release
- High absorbency capacity
- 10mm thickness provides cushioned surface for optimum conformance to uneven floors, walls and ceilings

PRODUCT	SKU	SIZE	COVERS/PACK	PACKS/CASE
V MOP FOAM COVER	FMC6LF12	4.5 X 15" (11 X 38cm)	10	20

CLEANROOM MOP WIPERS

Durx® 670	SKU	SIZE	SHEETS/PACK	PACKS/CASE
Nonwoven, 45% polyester/55% cellulose blend	DR670101810	10 X 18" (25 X 46cm)	100	10
MicroSeal®-VP	SKU	SIZE	SHEETS/PACK	PACKS/CASE
Sealed edge, 100% knitted polyester, laundered	MSVP1018B10	10 X 18" (25 X 46cm)	50 (BULK)	10
MicroSeal SuperSorb® Lite	SKU	SIZE	SHEETS/PACK	PACKS/CASE
Sealed edge, 2-ply, 100% knitted polyester, laundered	SSLT1018B10	10 X 18" (25 X 46cm)	25 (BULK)	10
MicroPolx® 2750	SKU	SIZE	SHEETS/PACK	PACKS/CASE
Polyester/nylon, microfiber knitted	MPX2705101810	10 X 18" (25 X 46cm)	50	10

Polypropylene grip

Fully autoclavable
lightweight durable
anodized aluminum
telescopic handle
extends from
35-65" (89-165cm)



Easy insertion of the holder into the pouches of the mop cover thanks to the V shape

Detachable wiper clips allow the use of disposable mop wipers in addition to the foam or nonwoven mop covers



DOUBLE SIDED 16" CLEANROOM FLAT MOPPING SYSTEM

The Double Sided Flat Mop holder's unique double sided design allows operators to clean approximately twice the surface area of a conventional flat mop before changing or re-saturating the mop head, improving cleaning efficiency and reducing cleaning time.



CLEANROOM DOUBLE SIDED FLAT MOP HOLDER

- Attachment and removal of the mop covers without bending
- Extremely maneuverable with a 360° swiveling head and flat profile-ideal for cleaning under and around production equipment
- Durable, autoclavable plastic
- Double the surface coverage of conventional flat mopping systems



CLEANROOM FLAT MOP TELESCOPING HANDLE

- Durable anodized aluminum with polypropylene grip
- Edge mounted handle design perfect for cleaning baseboards
- Fully autoclavable, polypropylene grip, lightweight durable anodized aluminum telescopic handle extends from 35 - 65" (89-165cm)

PRODUCT	SKU	SIZE	QTY PER CASE
DOUBLE SIDED MOP HOLDER	BCRDSMOP10	4 X 16" (10 X 40cm)	10
DOUBLE SIDED MOP HOLDER	BCRDSMOP1	4 X 16" (10 X 40cm)	1
TELESCOPING HANDLE	BCRHANDLE10	35-65" (89-165cm)	10
TELESCOPING HANDLE	BCRHANDLE1	35-65" (89-165cm)	1

CLEANROOM DOUBLE SIDED FLAT MOP WRINGER CART AND BUCKETS - FULLY AUTOCLAVABLE

Composition and Technology

- The Cleanroom Double Sided Mop Cart is made of high quality stainless steel
- Locking casters provide stability
- Wringer is made of durable plastic, suitable for the one-step wet cleaning process
- Ergonomically designed handle serves as a rest for the mop handle and makes the cart easy to maneuver in tight production areas
- Two 20 liter polypropylene buckets are color coded blue and red to differentiate between clean and dirty solutions
- Internal bucket graduations help insure correct mixing of cleaning and disinfecting solutions



PRODUCT	SKU	QTY PER CASE
STAINLESS STEEL MOP CART WITH BUCKETS	BCRMOPCART1	1
STAINLESS STEEL DS FLAT MOP WRINGER	BCRDSWRINGER1	1

CLEANROOM DOUBLE SIDED FLAT MOP COVERS



Double Sided Mop Nonwoven Cover

- 68 gsm polyester/cellulose outer cover
- 100% rayon nonwoven inner layer provides superior absorbency
- High tear strength
- Each cover is individually wrapped

SKU	SIZE	COVERS/ PACK	PACKS/ CASE
FMC5NW24	10 X 18" (25 X 46cm)	4	24



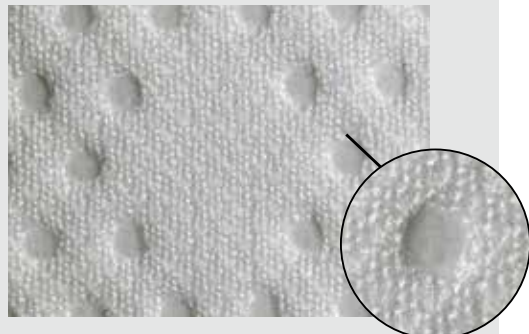
Double Sided Mop Foam Cover

- Abrasion resistant polyester knit cleanroom fabric laminated to absorbent polyurethane foam
- Laser cut and cleanroom laundered to minimize fiber and particle release
- High absorbency capacity
- 5mm thickness provides cushioned surface for optimum conformance to uneven floors, walls and ceilings
- Each cover is individually wrapped

SKU	SIZE	COVERS/ PACK	PACKS/ CASE
FMC7LF20	10 X 18" (25 X 46cm)	4	20

CLEANROOM FLAT MOP WIPERS

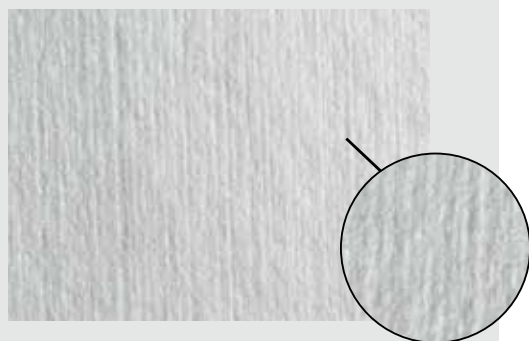
All the wipers are disposable and measured to fit the Mop Head Frame. More than one wiper can be attached to the mop head at a time. After mopping the area, the outer wiper can be disposed of and the remaining wipers are ready for the next mopping phase. This guarantees a fresh wiper is used for each new phase.



MicroSeal SuperSorb® Flat Mop Wiper

- Two-ply bonded, sealed edge 100% polyester
- Laundered and packaged in an ISO Class 4 (Class 10) cleanroom
- High Abrasion Resistance
- Autoclavable/sterile version available
- Lot number of each pack for traceability

SKU	SIZE	SHEETS/ PACK	PACKS/ CASE
MSSS.0812.12	8 X 12" (20 X 30cm)	50	12
MSSS.0824.12	8 X 24" (20 X 61cm)	25	12



Durx® 670 Flat Mop Wiper

- Hydroentangled 55% cellulose/ 45% polyester
- Smooth, highly sorbent and durable
- Autoclavable/sterile versions available
- No secondary binder
- Critical combination of the strength of synthetic polyester with the absorbency of cellulose
- Lot number of each pack for traceability

SKU	SIZE	SHEETS/ PACK	PACKS/ CASE
DR670.0812.20	8 X 12" (20 X 30cm)	100	20
DR670.0824.10	8 X 24" (20 X 61cm)	100	10



LARGE
W/SPRINGS



LARGE
W/PLASTIC EYES



SMALL
W/PLASTIC EYES

BCR® FLAT MOP SYSTEM

Flat Mop Head Frame

Efficient cleaning of floors, wall and other large surfaces is critical to the overall cleanliness of the production environment. BCR® Flat Mop Systems replicate the most effective way to clean a surface - WIPING. Available with a range of wiping substrates to support your level of cleanliness.

Features

- Clean, light and durable
- High quality anodized aluminum
- Autoclavable
- Unique stainless steel spring mechanisms for wiper attachment (Mop 2)
- Plastic eyes for wiper attachment (Mop 3 and 4)

PRODUCT	SKU	SIZE	QUANTITY
BCR® LARGE MOP HEAD FRAME W/SPRINGS	BCR.MOP2.1	3 1/2 X 23" (9 X 58cm)	1 PER CASE
BCR® LARGE MOP HEAD FRAME W/SPRINGS	BCR.MOP2.10	3 1/2 X 23" (9 X 58cm)	10 PER CASE
BCR® SMALL MOP HEAD FRAME W/PLASTIC EYES	BCR.MOP3.1	3 1/2 X 11" (9 X 28cm)	1 PER CASE
BCR® SMALL MOP HEAD FRAME W/PLASTIC EYES	BCR.MOP3.10	3 1/2 X 11" (9 X 28cm)	10 PER CASE
BCR® LARGE MOP HEAD FRAME W/PLASTIC EYES	BCR.MOP4.1	3 1/2 X 23" (9 X 58cm)	1 PER CASE
BCR® LARGE MOP HEAD FRAME W/PLASTIC EYES	BCR.MOP4.10	3 1/2 X 23" (9 X 58cm)	10 PER CASE

Flat Mop Handle

Features

- Telescopic handle: extends from 37-71" (95-180cm)
- Anodized aluminum; lightweight and strong
- Autoclavable

PRODUCT	SKU	SIZE	QUANTITY
TELESCOPING ALUMINUM HANDLE	BCR.T2HANDLE.1	37-71" (95-180cm)	1 PER CASE
TELESCOPING ALUMINUM HANDLE	BCR.T2HANDLE.10	37-71" (95-180cm)	10 PER CASE



EASYSWEEP® 360 ISOLATOR CLEANING SYSTEM

ISOLATOR CLEANING TOOL

Efficient cleaning of compounding isolators, biological safety cabinets, laminar flow hoods and other mini-environments is critical to the quality and purity of compounded products. The EasyClean 360° System includes a lightweight, maneuverable cleaning tool along with easy-to-use laundered polyester knit covers.



- Durable, mirror finish, stainless steel mop head swivels 360° for easy maneuverability
- Head can be locked for 180° swivel when desired
- 4x7" (10x18cm) triangular head shape allows improved access to tight corners.
- Lightweight anodized aluminum handles provided in 2 lengths - 14" (35cm) and 24" (61cm)
- Mop head and handles can be sterilized by autoclave or gamma irradiation

PRODUCT	SKU	HANDLE SIZES	QTY PER CASE
EASYSWEEP® 360 ISOLATOR CLEANING TOOL	EC360.ICT.1	14" & 24"	1

EASYSWEEP® ELASTIC ICT COVERS



- 100% continuous filament knitted polyester padded covers are laundered and packaged in an ISO Class 4 cleanroom
- Recommended for use with the EasyClean® Elastic Cover
- Foam-free cushioned design ensures even surface coverage with reduced residues and contaminants
- Easy-to-install covers fits securely and stay in place during use
- Autoclavable

PRODUCT	SKU	PACKAGING	PACKS/CASE
EASYSWEEP® ELASTIC ICT COVERS	EC360.EC.6	25 ELASTIC COVERS & 1 PADDED COVER/PACK	6
STERILE EASYSWEEP® ELASTIC ICT COVERS	EC360.ECST.20	10 ELASTIC COVERS & 1 PADDED COVER/PACK	20

EASYSWEEP® NONWOVEN ICT COVERS

- Double-ply 55% polyester/45% cellulose
- 100% nonwoven rayon inner layer for added absorbency
- Elastic edge allows secure fit on the mop head during use
- Autoclavable
- Recommended for use in an ISO Class 5 - 8 cleanroom or EU Grade B/C/D

PRODUCT	SKU	PACKAGING	PACKS/CASE
EASYSWEEP® NONWOVEN ICT COVERS PACK	EC360.NW.40	5 NONWOVEN COVERS/ 4 PACKS/PACKET	10



IONS ARE BYGONES

NEW CHALLENGES REQUIRE NEW SOLUTIONS

Today's semiconductor and microelectronics manufacturers face the challenge of the most complex cleaning application requirements. Berkshire, the creator of the patented CapSure® Technology, has launched **ValuSeal® IONX™**, a groundbreaking wiper with extremely low levels of releasable ions, to tackle this challenge.

Specifically created to offer long-term reliability and high yields, **ValuSeal® IONX™** is the answer to the unique challenges of cleaning and maintaining cleanrooms, production and test equipment.

TECHNOLOGY	IONX™ - An advanced proprietary ISO Class 4 cleanroom laundry process.
ADVANTAGES	<ul style="list-style-type: none"> Ultra-low* levels of ionic extractables and leachables. Laser Sealed-Edge for reduced fiber separation and particle contamination Lot traceability
RESULTS	<ul style="list-style-type: none"> The highest level of contamination control in critical processing applications including ISO class 1-3 and higher cleanrooms A chemically compatible match for IPA, Acetone, Ethanol and other popular solvents or disinfecting solutions

VALUSEAL®
IONX™
ADVANCED WIPER TECHNOLOGY

BERKSHIRE.COM



PROPER WIPER FOLDING & SURFACE CLEANING

A guide to properly fold and use a low-linting wiper for maximum efficiency and effectiveness in a controlled environment.

Recommended Surface Wiping Procedures

- A. Prior to entering the cleanroom, follow written SOPs for proper hand hygiene, garment donning, and gloving procedures.
- B. Disinfect and clean using proper wiping technique.
- C. Quarter-fold the wiper to get the maximum use out of the wiper and to prevent recontamination. Turn to a new wiper surface after each straight stroke.
- D. Always wipe using overlapping strokes, in a parallel direction. Use a new wiper surface with each linear stroke and always wipe from back to front, cleanest to dirtiest and driest to wettest.
- E. Never wipe in a circular motion.





CONTAMINATION CONTROL PRODUCT CATALOG